

Transportation Map

Bear and Bennion Fire

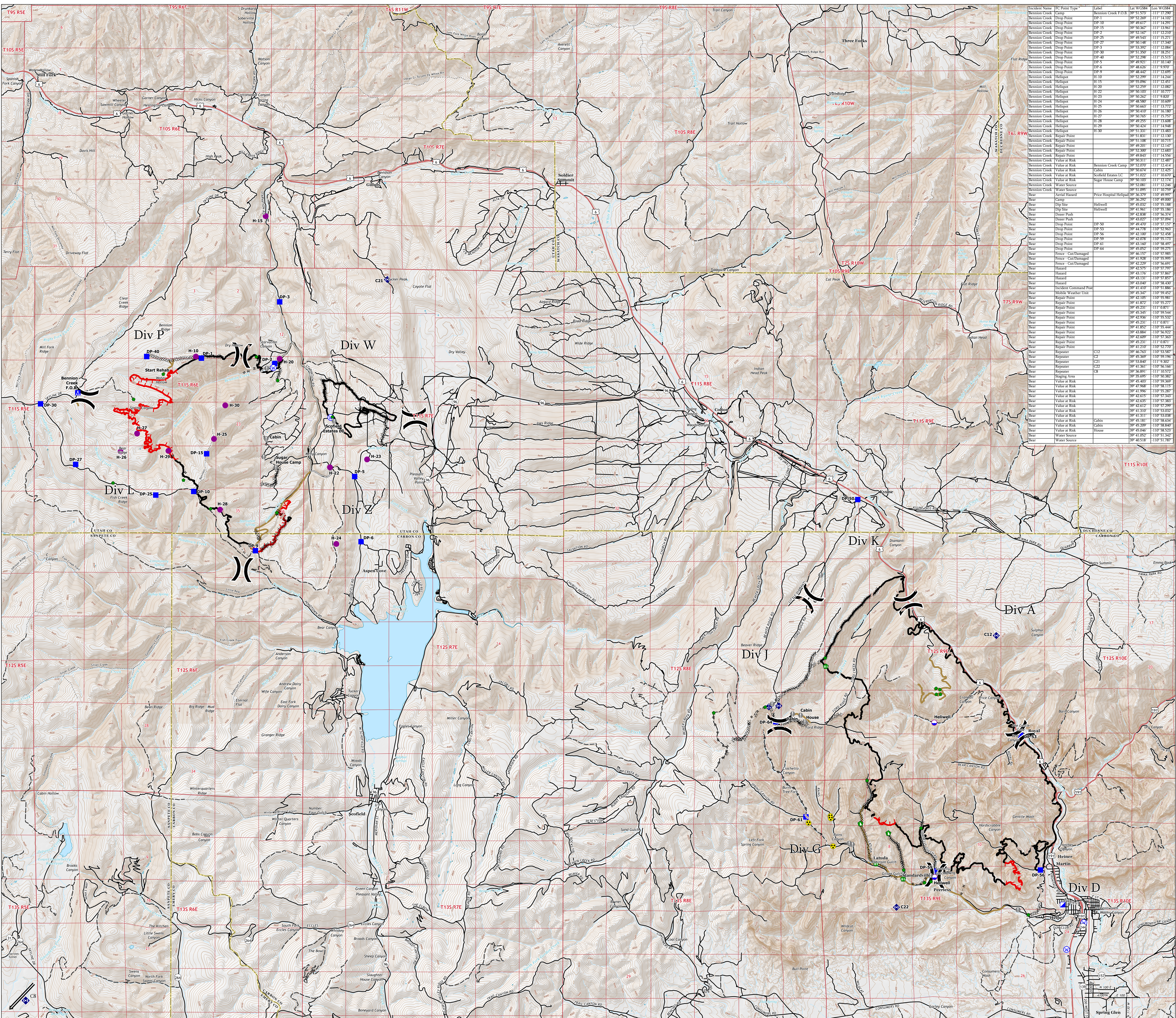
UT-VLD-000127

UT-MLF-000115

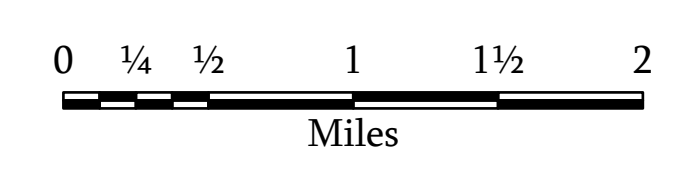
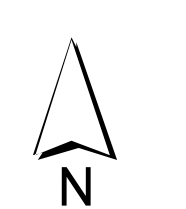
June 21, 2021



- Dip Site
- Helispot
- Division Break
- Incident Command Post
- Drop Point
- Camp
- Value at Risk
- Repair Point
- Fence - Cut/Damaged
- Dozer Push
- Mobile Weather Unit
- Repeater
- Hazard
- Water Source
- Completed Dozer Line
- Completed Hand Line
- Completed Road as Line
- Access or Improved Road
- Repair Line
- Fire Edge
- Contained Line
- Transportation
- Highway
- Road
- 4WD Road
- Trail



Incident Name	PU Point Type	Label	Lat WGS84	Lon WGS84
Bennion Creek	Drop Point	DP-1	39° 52' 20"	111° 14' 10"
Bennion Creek	Drop Point	DP-10	39° 49' 17"	111° 14' 29"
Bennion Creek	Drop Point	DP-15	39° 52' 20"	111° 15' 20"
Bennion Creek	Drop Point	DP-2	39° 52' 10"	111° 12' 10"
Bennion Creek	Drop Point	DP-25	39° 49' 43"	111° 15' 21"
Bennion Creek	Drop Point	DP-3	39° 53' 30"	111° 12' 08"
Bennion Creek	Drop Point	DP-30	39° 52' 50"	111° 18' 21"
Bennion Creek	Drop Point	DP-40	39° 52' 28"	111° 15' 15"
Bennion Creek	Drop Point	DP-5	39° 49' 21"	111° 10' 10"
Bennion Creek	Drop Point	DP-6	39° 49' 20"	111° 15' 19"
Bennion Creek	Drop Point	DP-9	39° 48' 44"	111° 12' 29"
Bennion Creek	Helispot	H-10	39° 52' 29"	111° 14' 24"
Bennion Creek	Helispot	H-15	39° 50' 50"	111° 12' 21"
Bennion Creek	Helispot	H-20	39° 49' 25"	111° 12' 08"
Bennion Creek	Helispot	H-22	39° 52' 20"	111° 10' 77"
Bennion Creek	Helispot	H-23	39° 50' 30"	111° 9' 82"
Bennion Creek	Helispot	H-24	39° 48' 50"	111° 10' 20"
Bennion Creek	Helispot	H-25	39° 49' 21"	111° 13' 79"
Bennion Creek	Helispot	H-26	39° 50' 41"	111° 16' 18"
Bennion Creek	Helispot	H-27	39° 50' 70"	111° 15' 25"
Bennion Creek	Helispot	H-28	39° 50' 50"	111° 15' 08"
Bennion Creek	Helispot	H-29	39° 50' 24"	111° 14' 58"
Bennion Creek	Helispot	H-30	39° 51' 20"	111° 12' 10"
Bennion Creek	Repair Point	RP-30	39° 51' 53"	111° 12' 10"
Bennion Creek	Repair Point	RP-1	39° 51' 108"	111° 10' 71"
Bennion Creek	Repair Point	RP-2	39° 52' 20"	111° 12' 10"
Bennion Creek	Repair Point	RP-3	39° 52' 20"	111° 12' 28"
Bennion Creek	Repair Point	RP-4	39° 50' 843"	111° 14' 56"
Bennion Creek	Repair Point	RP-5	39° 52' 20"	111° 12' 28"
Bennion Creek	Value at Risk	Bennion Creek Camp	39° 52' 00"	111° 12' 14"
Bennion Creek	Value at Risk	Cabin	39° 50' 24"	111° 12' 25"
Bennion Creek	Value at Risk	Scotts Estates Lc	39° 51' 02"	111° 10' 20"
Bennion Creek	Value at Risk	Sugar House Camp	39° 50' 103"	111° 12' 14"
Bennion Creek	Water Source	Water Source	39° 51' 095"	111° 10' 79"
Bear	Aerial Hazard	Price Hospital Helispot	39° 56' 379"	110° 49' 959"
Bear	Dip Site	Helispot	39° 45' 032"	110° 55' 188"
Bear	Dip Site	Helispot	39° 41' 801"	110° 55' 186"
Bear	Dip Site	Helispot	39° 42' 824"	110° 56' 714"
Bear	Dip Site	Helispot	39° 43' 029"	110° 57' 094"
Bear	Dip Site	Helispot	39° 42' 500"	110° 57' 119"
Bear	Dip Site	Helispot	39° 44' 728"	110° 52' 503"
Bear	Dip Site	Helispot	39° 42' 700"	110° 52' 458"
Bear	Dip Site	Helispot	39° 42' 098"	110° 53' 719"
Bear	Dip Site	Helispot	39° 43' 160"	110° 58' 499"
Bear	Dip Site	Helispot	39° 43' 052"	110° 59' 273"
Bear	Dip Site	Helispot	39° 42' 200"	110° 57' 285"
Bear	Dip Site	Helispot	39° 41' 928"	110° 55' 959"
Bear	Dip Site	Helispot	39° 42' 229"	110° 56' 699"
Bear	Dip Site	Helispot	39° 43' 176"	110° 57' 807"
Bear	Dip Site	Helispot	39° 43' 111"	110° 57' 899"
Bear	Dip Site	Helispot	39° 43' 040"	110° 58' 430"
Bear	Dip Site	Helispot	39° 41' 410"	110° 51' 880"
Bear	Dip Site	Helispot	39° 45' 200"	110° 52' 110"
Bear	Dip Site	Helispot	39° 41' 807"	110° 55' 277"
Bear	Dip Site	Helispot	39° 42' 211"	110° 56' 714"
Bear	Dip Site	Helispot	39° 43' 340"	110° 59' 514"
Bear	Dip Site	Helispot	39° 42' 750"	110° 55' 222"
Bear	Dip Site	Helispot	39° 45' 231"	111° 0' 821"
Bear	Dip Site	Helispot	39° 41' 882"	110° 55' 444"
Bear	Dip Site	Helispot	39° 43' 848"	110° 56' 209"
Bear	Dip Site	Helispot	39° 42' 099"	110° 57' 303"
Bear	Dip Site	Helispot	39° 45' 221"	111° 0' 871"
Bear	Dip Site	Helispot	39° 41' 210"	110° 52' 700"
Bear	Dip Site	Helispot	39° 46' 763"	110° 53' 587"
Bear	Dip Site	Helispot	39° 45' 308"	110° 59' 740"
Bear	Dip Site	Helispot	39° 53' 840"	111° 9' 300"
Bear	Dip Site	Helispot	39° 41' 361"	110° 56' 160"
Bear	Dip Site	Helispot	39° 46' 901"	111° 10' 211"
Bear	Dip Site	Helispot	39° 55' 095"	110° 50' 382"
Bear	Dip Site	Helispot	39° 45' 400"	110° 59' 309"
Bear	Dip Site	Helispot	39° 47' 908"	110° 58' 115"
Bear	Dip Site	Helispot	39° 41' 906"	110° 55' 289"
Bear	Dip Site	Helispot	39° 42' 251"	110° 57' 247"
Bear	Dip Site	Helispot	39° 42' 630"	110° 57' 383"
Bear	Dip Site	Helispot	39° 42' 612"	110° 57' 299"
Bear	Dip Site	Helispot	39° 41' 210"	110° 53' 020"
Bear	Dip Site	Helispot	39° 41' 311"	110° 53' 038"
Bear	Dip Site	Helispot	39° 45' 181"	110° 58' 624"
Bear	Dip Site	Helispot	39° 45' 200"	110° 58' 400"
Bear	Dip Site	Helispot	39° 45' 486"	110° 58' 513"
Bear	Dip Site	Helispot	39° 41' 052"	110° 51' 342"
Bear	Dip Site	Helispot	39° 46' 538"	110° 51' 207"



1:33,000

Name: NAD 1983 UTM Zone 12N