

Pilot Map

Bear Fire

UT-VLD-000127

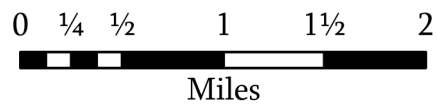
June 21, 2021



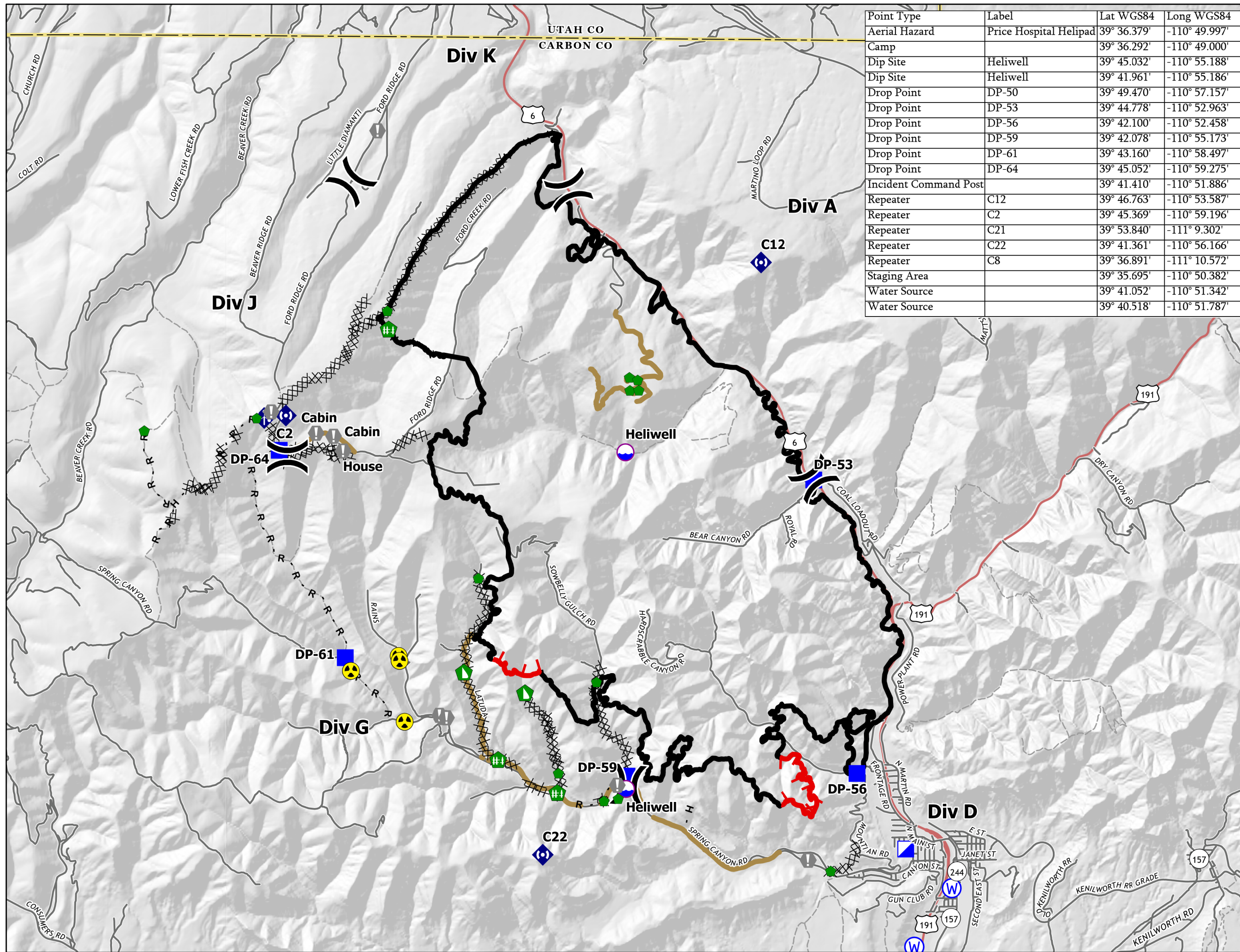
- Dip Site
- Division Break
- Incident Command Post
- Drop Point
- Value at Risk
- Repair Point
- Fence - Cut/Damaged
- Dozer Push
- Mobile Weather Unit
- Repeater
- Hazard
- Water Source
- Completed Dozer Line
- Completed Hand Line
- Completed Road as Line
- Access or Improved Road
- Repair Line
- Fire Edge
- Contained Line
- County or Equivalent

Transportation

- Highway
- Road
- 4WD Road
- Trail



1:60,000
NAD 1983
UTM 12N



Point Type	Label	Lat WGS84	Long WGS84
Aerial Hazard	Price Hospital Helipad	39° 36.379'	-110° 49.997'
Camp		39° 36.292'	-110° 49.000'
Dip Site	Heliwell	39° 45.032'	-110° 55.188'
Dip Site	Heliwell	39° 41.961'	-110° 55.186'
Drop Point	DP-50	39° 49.470'	-110° 57.157'
Drop Point	DP-53	39° 44.778'	-110° 52.963'
Drop Point	DP-56	39° 42.100'	-110° 52.458'
Drop Point	DP-59	39° 42.078'	-110° 55.173'
Drop Point	DP-61	39° 43.160'	-110° 58.497'
Drop Point	DP-64	39° 45.052'	-110° 59.275'
Incident Command Post		39° 41.410'	-110° 51.886'
Repeater	C12	39° 46.763'	-110° 53.587'
Repeater	C2	39° 45.369'	-110° 59.196'
Repeater	C21	39° 53.840'	-111° 9.302'
Repeater	C22	39° 41.361'	-110° 56.166'
Repeater	C8	39° 36.891'	-111° 10.572'
Staging Area		39° 35.695'	-110° 50.382'
Water Source		39° 41.052'	-110° 51.342'
Water Source		39° 40.518'	-110° 51.787'