

Transportation Map

Bear Fire

UT-VLD-000127

June 22, 2021

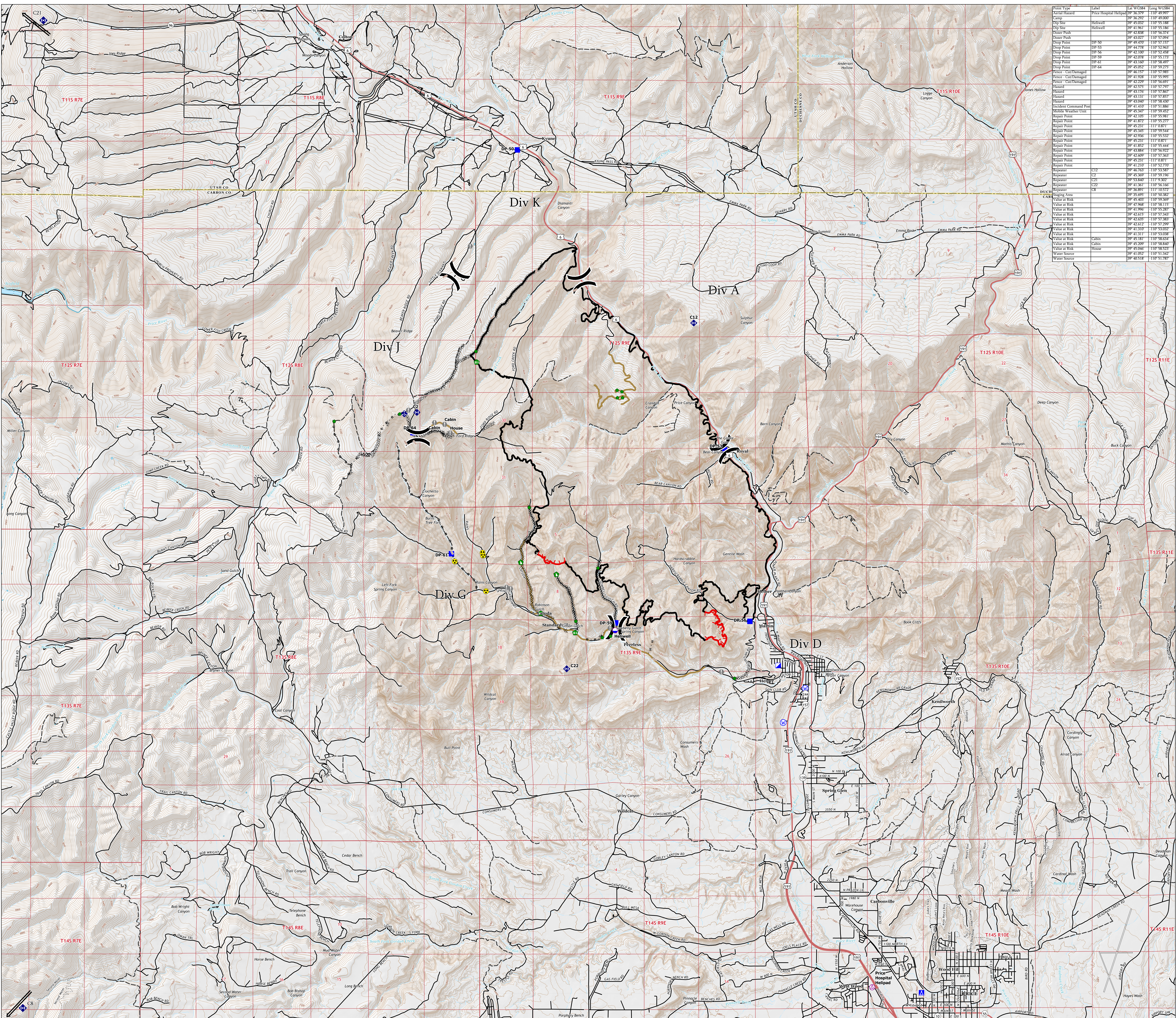


Incident Management Team

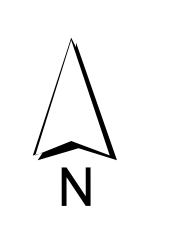
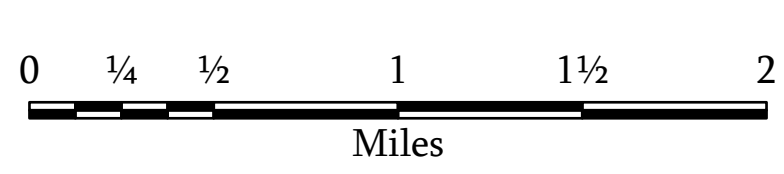
12,172 Acres

IR Flight at 0146 hours on 6/21

- Air Operations**
 - Aerial Hazard
 - Dip Site
 - Mobile Retardant Base
- Assignment Breaks**
 - Division Break
- Logistics**
 - Incident Command Post
 - Drop Point
 - Camp
 - Staging Area
- Reference**
 - Value at Risk
- Repair**
 - Repair Point
 - Fence - Cut/Damaged
 - Dozer Push
- Communications**
 - Mobile Weather Unit
 - Repeater
- Safety**
 - Hazard
- Water**
 - Water Source
- Ops Completed**
 - Completed Dozer Line
 - Completed Hand Line
 - Completed Road as Line
- Reference**
 - Access or Improved Road
- Repair**
 - Repair Line
- Fire Perimeter**
 - Fire Edge
 - Contained Line
- Transportation**
 - Highway
 - Road
 - 4WD Road
 - Trail



Point Type	Label	Lat WGS84	Long WGS84
Aerial Hazard	Price Hospital Helipad	39 36 292	-110 49 000
Dip Site	Helipad	39 45 002	-110 55 188
Dip Site	Helipad	39 41 961	-110 55 182
Dozer Push		39 42 838	-110 56 374
Dozer Push		39 43 027	-110 57 094
Drop Point	DP-50	39 44 778	-110 57 963
Drop Point	DP-56	39 43 100	-110 57 250
Drop Point	DP-59	39 42 078	-110 55 173
Drop Point	DP-61	39 43 160	-110 58 497
Drop Point	DP-64	39 43 925	-110 57 272
Fence - Van Dammed		39 46 157	-110 57 985
Fence - Cut/Damaged		39 41 928	-110 55 995
Fence - Van Dammed		39 42 829	-110 57 997
Hazard		39 42 975	-110 57 797
Hazard		39 43 176	-110 57 760
Hazard		39 43 131	-110 57 857
Hazard		39 43 020	-110 58 430
Incident Command Post		39 41 110	-110 57 880
Mobile Weather Unit		39 43 347	-110 59 432
Repair Point		39 42 105	-110 55 981
Repair Point		39 41 872	-110 55 921
Repair Point		39 43 231	-111 03 871
Repair Point		39 43 349	-110 57 920
Repair Point		39 43 950	-110 55 532
Repair Point		39 43 231	-111 03 871
Repair Point		39 43 852	-110 55 444
Repair Point		39 43 884	-110 56 922
Repair Point		39 42 609	-110 57 363
Repair Point		39 43 231	-111 03 871
Repeater		39 41 210	-110 57 770
Repeater	C12	39 46 763	-110 53 368
Repeater	C2	39 42 622	-110 57 290
Repeater	C21	39 53 820	-111 03 302
Repeater	C23	39 43 501	-110 56 180
Repeater	C8	39 56 801	-111 10 572
Staging Area		39 38 095	-110 50 382
Value at Risk		39 47 568	-110 58 115
Value at Risk		39 41 996	-110 55 287
Value at Risk		39 42 615	-110 57 443
Value at Risk		39 42 635	-110 57 383
Value at Risk		39 42 622	-110 57 290
Value at Risk		39 41 310	-110 53 052
Value at Risk		39 41 311	-110 53 058
Value at Risk	Cabin	39 43 181	-110 58 634
Value at Risk	Cabin	39 45 209	-110 58 840
Value at Risk	House	39 46 046	-110 58 523
Water Source		39 41 052	-110 51 162
Water Source		39 40 518	-110 51 787



1:33,000

Name: NAD 1983 UTM Zone 12N