

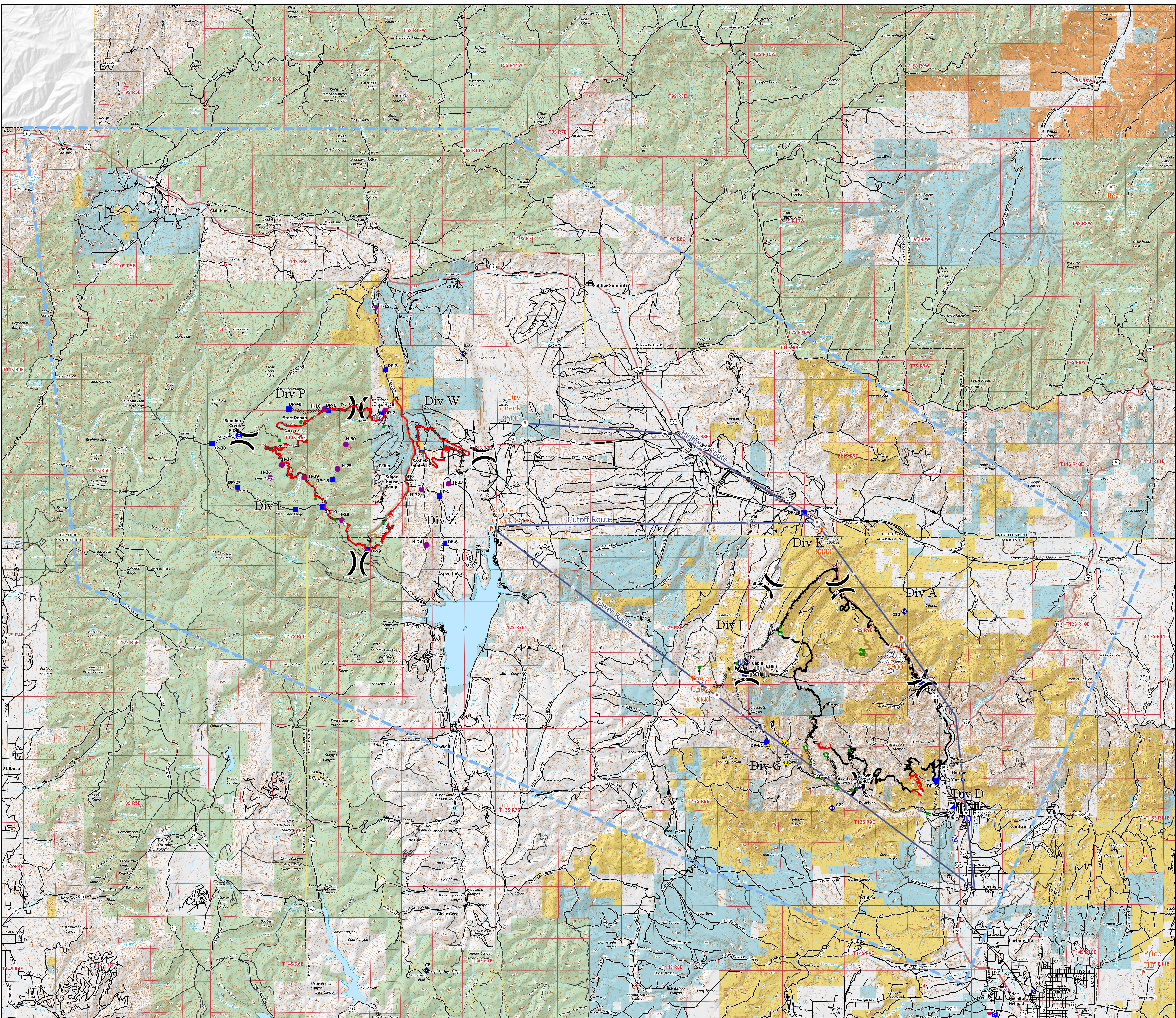
Air Operations Map

Bear and Bennion Fire

UT-VLD-000127

UT-MLF-000115

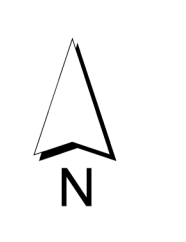
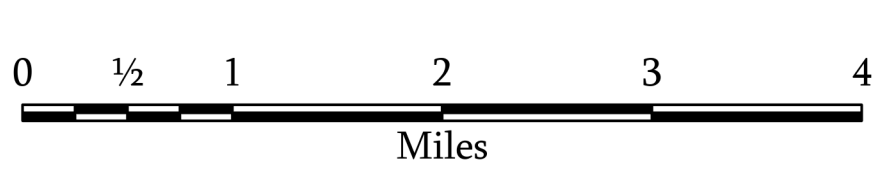
June 22, 2021



- ⊙ Aerial Hazard
- ⊙ Dip Site
- ⊙ Mobile Retardant Base
- ⊙ Helispot
- ⊙ Division Break
- ⊙ Incident Command Post
- ⊙ Drop Point
- ⊙ Camp
- ⊙ Staging Area
- ⊙ Value at Risk
- ⊙ Repair Point
- ⊙ Fence - Cut/Damaged
- ⊙ Dozer Push
- ⊙ Mobile Weather Unit
- ⊙ Repeater
- ⊙ Hazard
- ⊙ Water Source
- ⊙ Checkpoints
- ⊙ Helicopter Routes
- ⊙ Completed Dozer Line
- ⊙ Completed Hand Line
- ⊙ Completed Road as Line
- ⊙ Access or Improved Road
- ⊙ Repair Line
- ⊙ Fire Edge
- ⊙ Contained Line
- ⊙ TFR: 1/2211

- Land Status**
- ⊙ Bureau of Indian Affairs (BIA)
 - ⊙ Bureau of Land Management (BLM)
 - ⊙ State
 - ⊙ US Forest Service (USFS)

Incident Name	Point Type	Label	Lat WGS84	Long WGS84
Bennion Creek	Camp	Bennion Creek F.O.B.	39° 51.975'	-110° 17.290'
Bennion Creek	Drop Point	DP-1	39° 52.269'	-110° 14.102'
Bennion Creek	Drop Point	DP-10	39° 49.617'	-110° 14.291'
Bennion Creek	Drop Point	DP-15	39° 50.367'	-110° 13.961'
Bennion Creek	Drop Point	DP-2	39° 52.167'	-110° 12.101'
Bennion Creek	Drop Point	DP-25	39° 49.543'	-110° 15.271'
Bennion Creek	Drop Point	DP-27	39° 50.148'	-110° 17.340'
Bennion Creek	Drop Point	DP-3	39° 53.392'	-110° 12.084'
Bennion Creek	Drop Point	DP-30	39° 51.350'	-110° 18.531'
Bennion Creek	Drop Point	DP-40	39° 52.298'	-110° 15.515'
Bennion Creek	Drop Point	DP-5	39° 49.921'	-110° 10.140'
Bennion Creek	Drop Point	DP-6	39° 48.626'	-110° 9.970'
Bennion Creek	Drop Point	DP-9	39° 48.442'	-110° 12.095'
Bennion Creek	Helispot	H-10	39° 52.299'	-110° 14.244'
Bennion Creek	Helispot	H-15	39° 55.096'	-110° 12.451'
Bennion Creek	Helispot	H-20	39° 52.299'	-110° 12.082'
Bennion Creek	Helispot	H-22	39° 50.103'	-110° 10.977'
Bennion Creek	Helispot	H-23	39° 50.262'	-110° 9.803'
Bennion Creek	Helispot	H-24	39° 48.580'	-110° 10.609'
Bennion Creek	Helispot	H-25	39° 50.663'	-110° 13.772'
Bennion Creek	Helispot	H-26	39° 50.419'	-110° 16.180'
Bennion Creek	Helispot	H-27	39° 50.765'	-110° 15.757'
Bennion Creek	Helispot	H-28	39° 49.255'	-110° 13.608'
Bennion Creek	Helispot	H-30	39° 51.331'	-110° 13.483'
Bennion Creek	Water Source	W-1	39° 52.081'	-110° 12.746'
Bennion Creek	Water Source	W-2	39° 51.095'	-110° 10.759'
Bear	Aerial Hazard	Price Hospital Helispot	39° 36.379'	-110° 49.997'
Bear	Camp	Camp	39° 36.292'	-110° 49.000'
Bear	Dip Site	Helispot	39° 45.052'	-110° 55.186'
Bear	Dip Site	Helispot	39° 41.961'	-110° 55.186'
Bear	Dozer Push	Dozer Push	39° 42.838'	-110° 56.374'
Bear	Dozer Push	Dozer Push	39° 43.027'	-110° 57.094'
Bear	Drop Point	DP-50	39° 49.400'	-110° 39.139'
Bear	Drop Point	DP-53	39° 44.798'	-110° 52.963'
Bear	Drop Point	DP-56	39° 42.100'	-110° 52.458'
Bear	Drop Point	DP-59	39° 42.078'	-110° 53.173'
Bear	Drop Point	DP-61	39° 43.160'	-110° 58.497'
Bear	Drop Point	DP-64	39° 45.052'	-110° 59.275'
Bear	Incident Command Post	ICP	39° 41.410'	-110° 51.886'
Bear	Repeater	C12	39° 46.763'	-110° 53.889'
Bear	Repeater	C2	39° 45.369'	-110° 59.196'
Bear	Repeater	C21	39° 53.840'	-110° 9.302'
Bear	Repeater	C22	39° 41.361'	-110° 56.166'
Bear	Repeater	C8	39° 36.891'	-110° 10.972'
Bear	Staging Area	Staging Area	39° 35.695'	-110° 50.382'
Bear	Water Source	Water Source	39° 41.052'	-110° 51.342'
Bear	Water Source	Water Source	39° 40.518'	-110° 51.287'



1:58,000

Name: NAD 1983 UTM Zone 12N