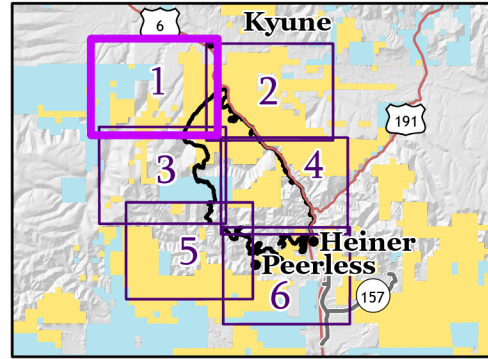
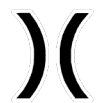



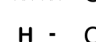





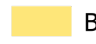



# Bear Fire



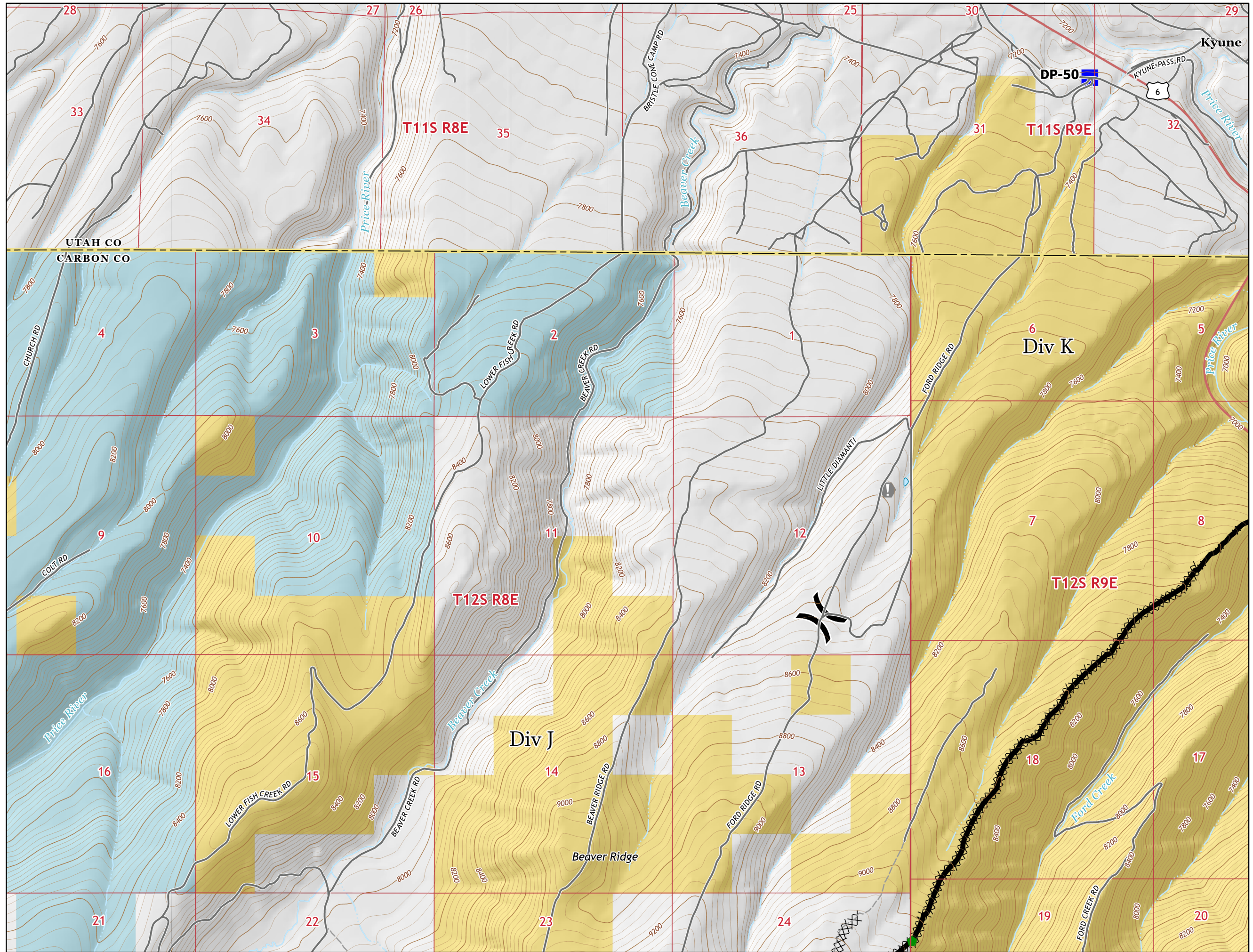
Page 1 of 6

-  Division Break
  -  Drop Point
  -  Value at Risk
  -  Repair Point
  -  Completed Dozer Line
  -  Completed Hand Line
  -  Contained Line
- Transportation**
-  Highway
  -  Road
  -  4WD Road
- Land Status**
-  Bureau of Land Management (BLM)
  -  State

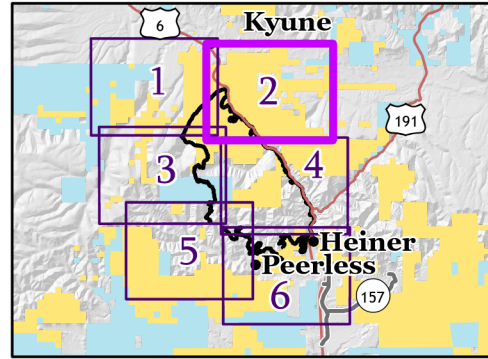


1:24,000

Name: NAD 1983 UTM Zone 12N



# Bear Fire



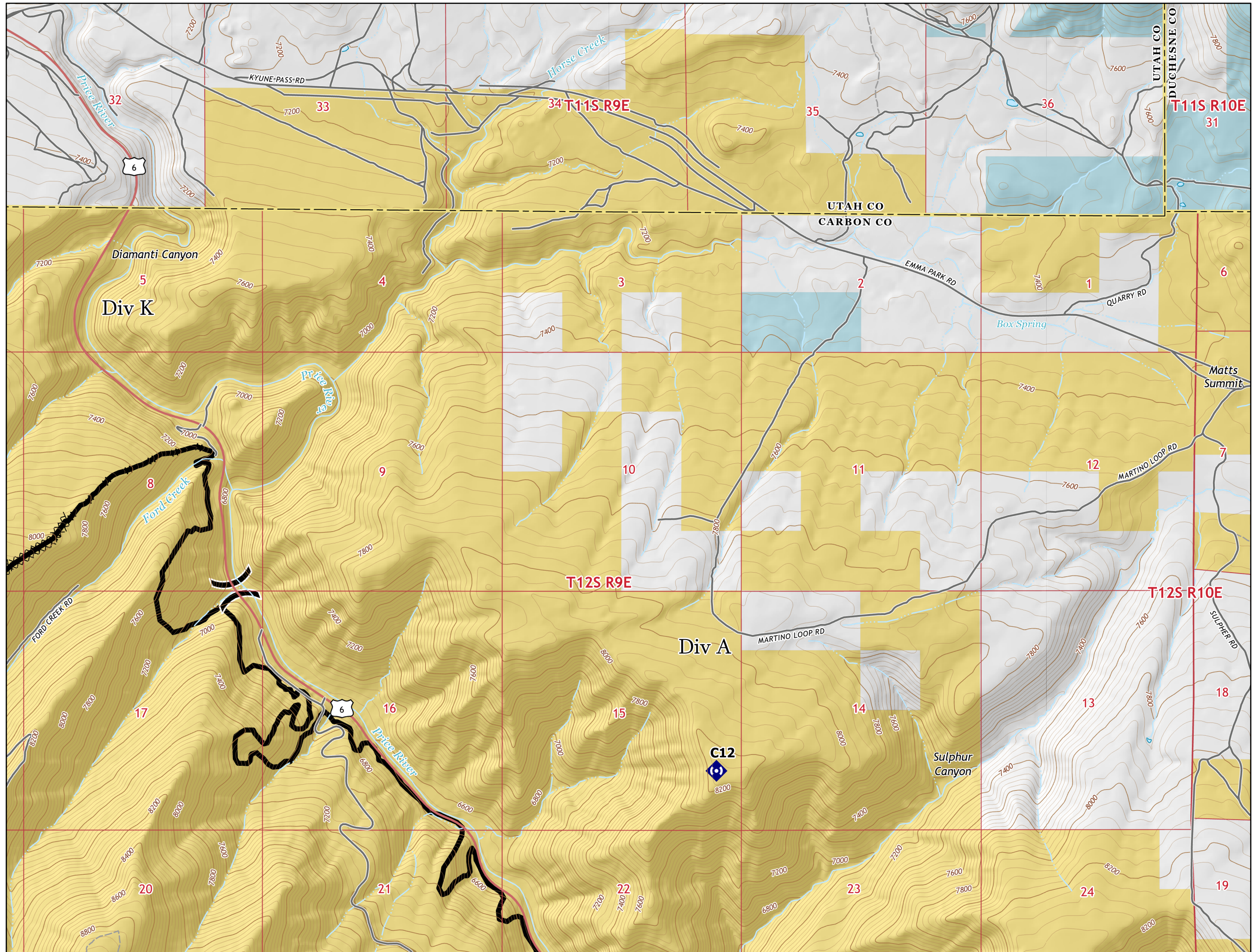
Page 2 of 6

- Division Break
- Repeater
- Completed Dozer Line
- Completed Hand Line
- Repair Line
- Contained Line
- Transportation**
  - Highway
  - Road
  - 4WD Road
- Land Status**
  - Bureau of Land Management (BLM)
  - State



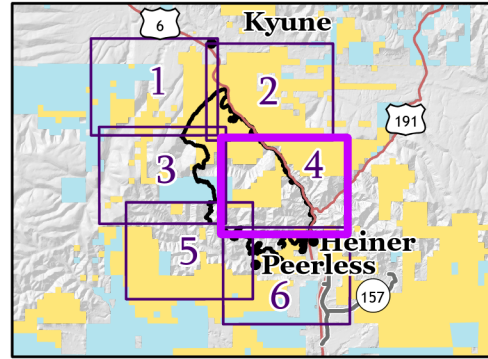
1:24,000

Name: NAD 1983 UTM Zone 12N

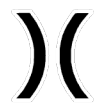



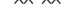










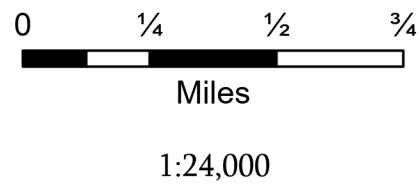
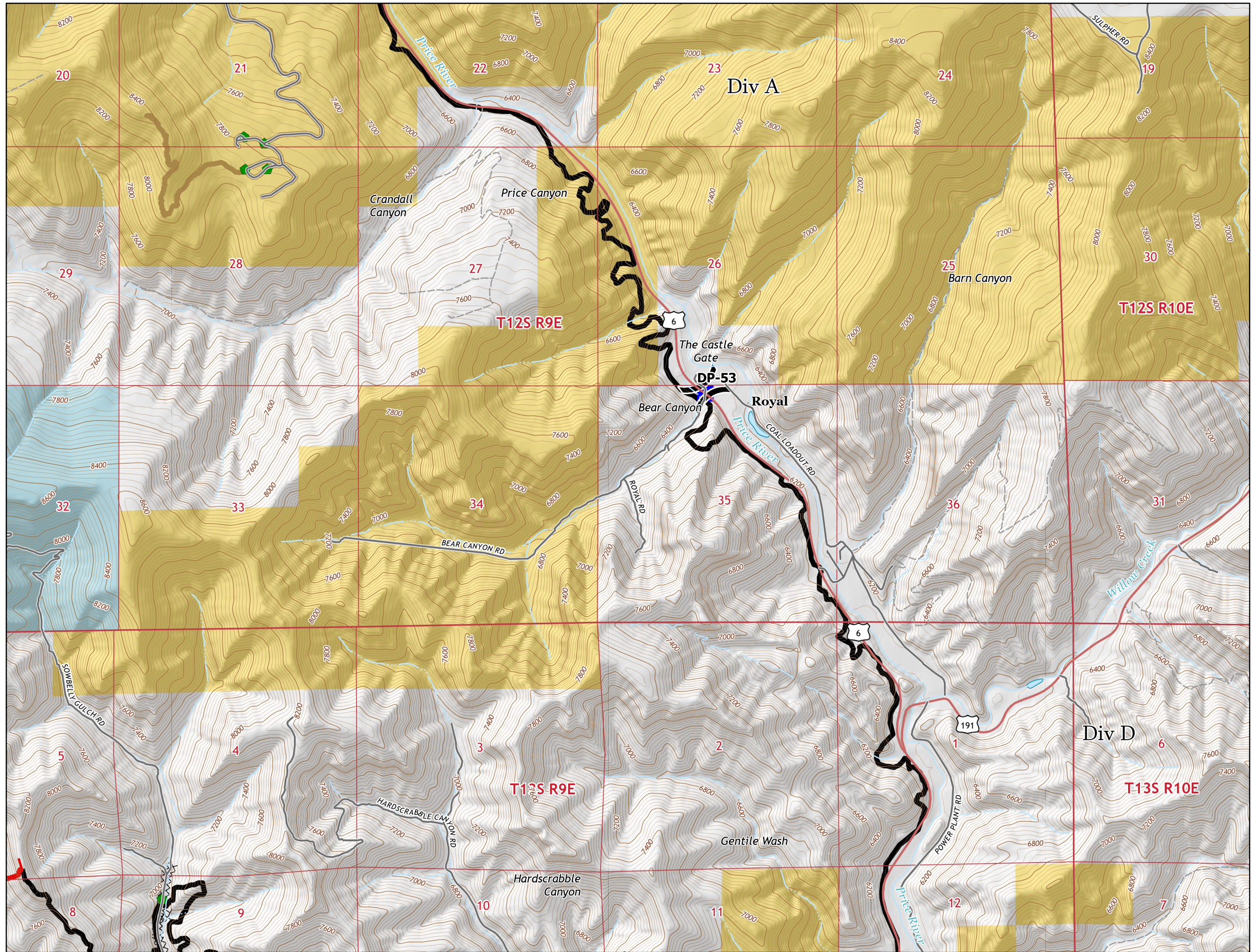


# Bear Fire

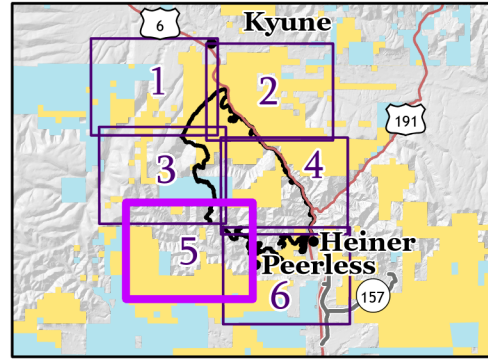


Page 4 of 6










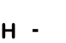
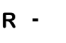









-  Division Break
  -  Drop Point
  -  Repair Point
  -  Dozer Push
  -  Completed Dozer Line
  -  Repair Line
  -  Fire Edge
  -  Contained Line
- Transportation**
-  Highway
  -  Road
  -  4WD Road
- Land Status**
-  Bureau of Land Management (BLM)
  -  State



# Bear Fire



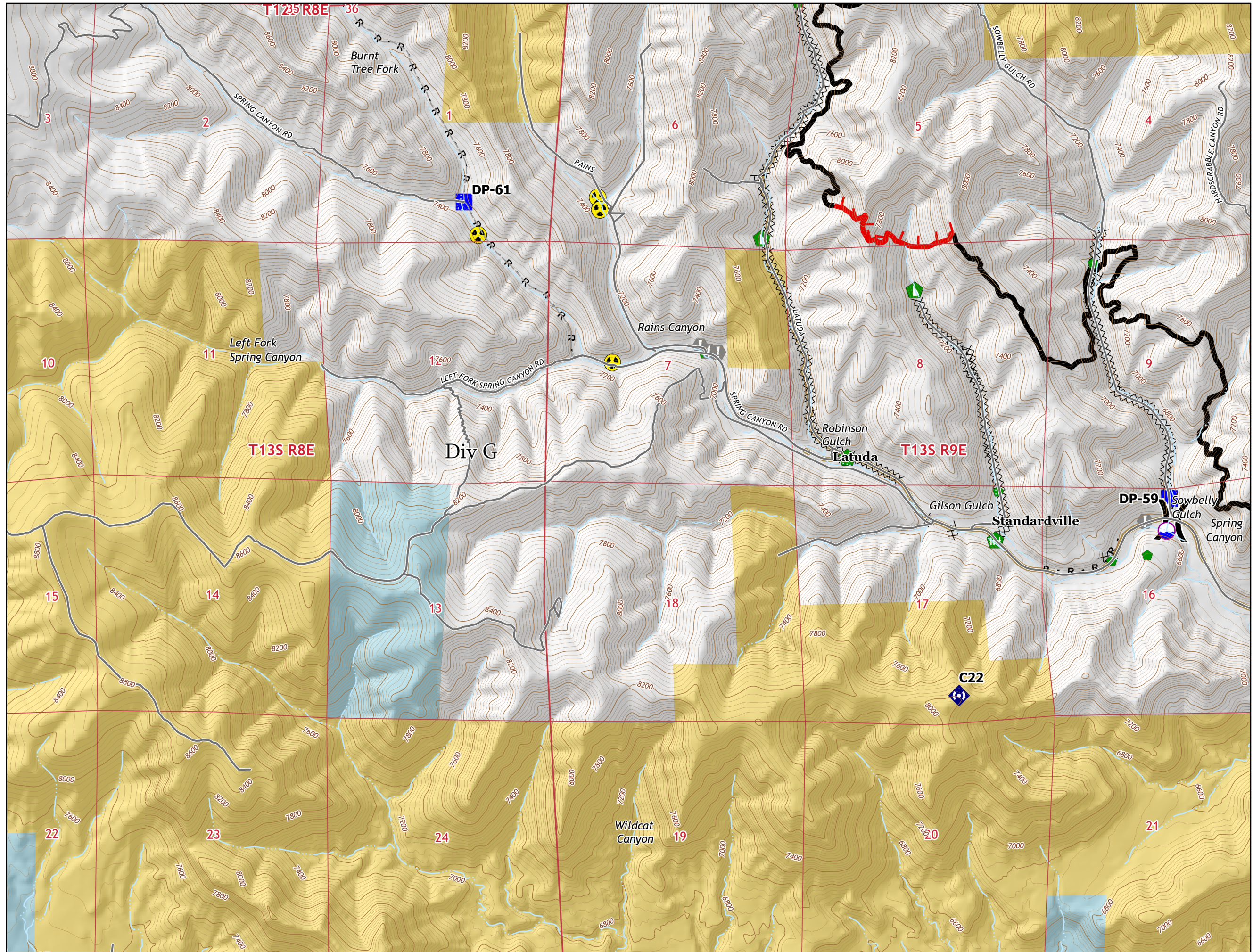
Page 5 of 6

-  Dip Site
  -  Division Break
  -  Drop Point
  -  Value at Risk
  -  Repair Point
  -  Fence - Cut/Damaged
  -  Dozer Push
  -  Repeater
  -  Hazard
  -  Completed Dozer Line
  -  Completed Hand Line
  -  Completed Road as Line
  -  Access or Improved Road
  -  Repair Line
  -  Fire Edge
  -  Contained Line
- Transportation**
-  Road
  -  4WD Road
- Land Status**
-  Bureau of Land Management (BLM)
  -  State

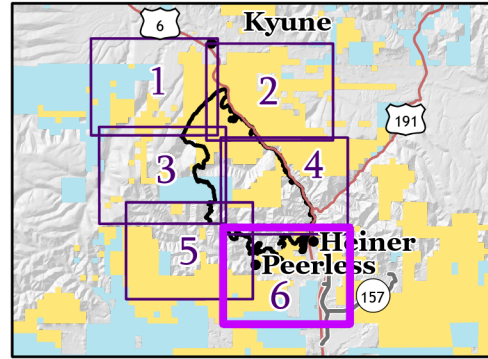


1:24,000

Name: NAD 1983 UTM Zone 12N



# Bear Fire



Page 6 of 6

- Dip Site
  - Division Break
  - Incident Command Post
  - Drop Point
  - Value at Risk
  - Repair Point
  - Fence - Cut/Damaged
  - Repeater
  - Water Source
  - Completed Dozer Line
  - Completed Hand Line
  - Completed Road as Line
  - Access or Improved Road
  - Repair Line
  - Fire Edge
  - Contained Line
- Transportation**
- Highway
  - Road
  - 4WD Road
- Land Status**
- Bureau of Land Management (BLM)
  - State



1:24,000

Name: NAD 1983 UTM Zone 12N

