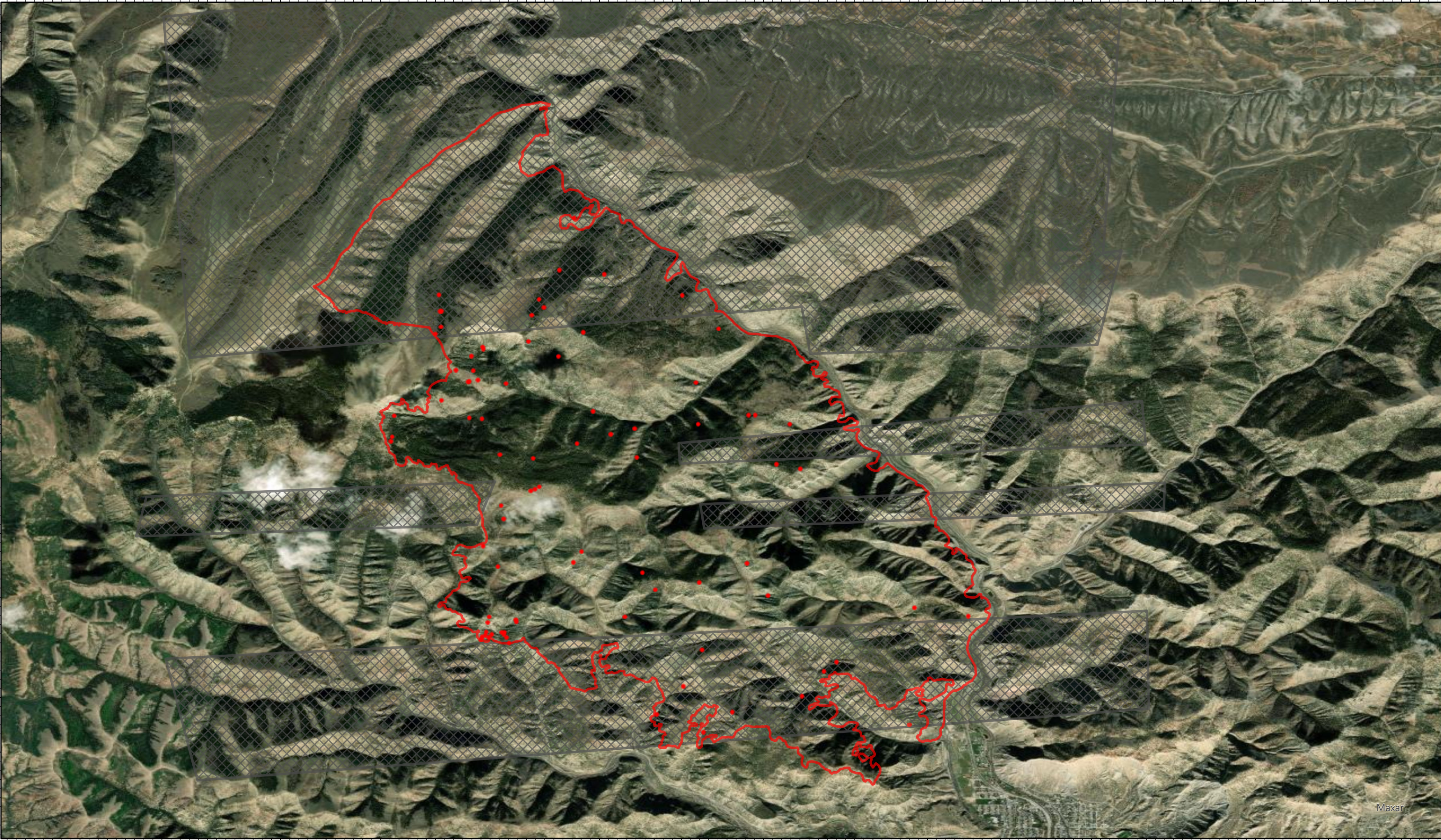
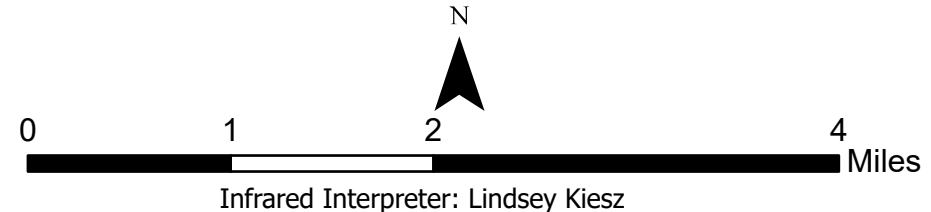


111°0'30"W 111°W 110°59'30"W 110°59'W 110°58'30"W 110°58'W 110°57'30"W 110°57'W 110°56'30"W 110°56'W 110°55'30"W 110°55'W 110°54'30"W 110°54'W 110°53'30"W 110°53'W 110°52'30"W 110°52'W 110°51'30"W 110°51'W 110°50'30"W 110°50'W 110°49'30"W 110°49'W 110°48'30"W 110°48'W

39°48'30"N
39°48'N
39°47'30"N
39°47'N
39°46'30"N
39°46'N
39°45'30"N
39°45'N
39°44'30"N
39°44'N
39°43'30"N
39°43'N
39°42'30"N
39°42'N
39°41'30"N



Bear UT-VLD-0127
Infrared Heat Sources
June 18, 2021 0220 MDT
12,170 Acres



- IR Isolated Heat Source
- ☒ Cloud Cover
- ▭ IR Heat Perimeter

