

# Pilot Map

## Bennion Fire

### UT-MLF-000115

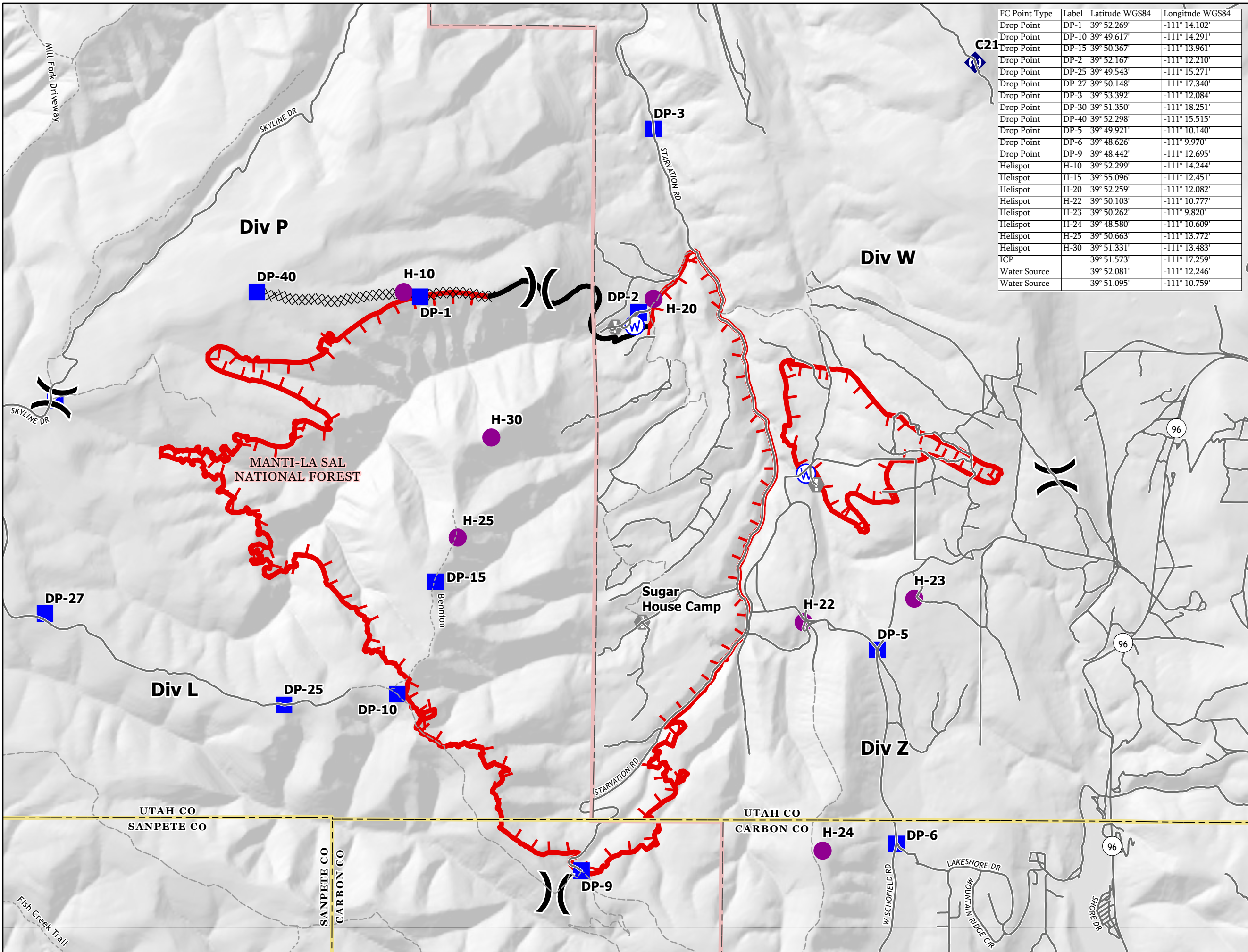
June 15, 2021



- Ops Completed**
  - Completed Dozer Line
- Fire Perimeter**
  - Fire Edge
  - Contained Line
- Air Operations**
  - Helispot
- Assignment Breaks**
  - Division Break
- Logistics**
  - Incident Command Post
  - Drop Point
- Reference**
  - Value at Risk
- Communications**
  - Repeater
- Water**
  - Water Source
  - County or Equivalent
- Transportation**
  - Road
  - 4WD Road
  - Trail

0 1/4 1/2 1 1 1/2  
Miles

1:44,000  
NAD 1983  
UTM 12N



FC Point Type	Label	Latitude WGS84	Longitude WGS84
Drop Point	DP-1	39° 52.269'	-111° 14.102'
Drop Point	DP-10	39° 49.617'	-111° 14.291'
Drop Point	DP-15	39° 50.367'	-111° 13.961'
Drop Point	DP-2	39° 52.167'	-111° 12.210'
Drop Point	DP-25	39° 49.543'	-111° 15.271'
Drop Point	DP-27	39° 50.148'	-111° 17.340'
Drop Point	DP-3	39° 53.392'	-111° 12.084'
Drop Point	DP-30	39° 51.350'	-111° 18.251'
Drop Point	DP-40	39° 52.298'	-111° 15.515'
Drop Point	DP-5	39° 49.921'	-111° 10.140'
Drop Point	DP-6	39° 48.626'	-111° 9.970'
Drop Point	DP-9	39° 48.442'	-111° 12.695'
Helispot	H-10	39° 52.299'	-111° 14.244'
Helispot	H-15	39° 55.096'	-111° 12.451'
Helispot	H-20	39° 52.259'	-111° 12.082'
Helispot	H-22	39° 50.103'	-111° 10.777'
Helispot	H-23	39° 50.262'	-111° 9.820'
Helispot	H-24	39° 48.580'	-111° 10.609'
Helispot	H-25	39° 50.663'	-111° 13.772'
Helispot	H-30	39° 51.331'	-111° 13.483'
ICP		39° 51.573'	-111° 17.259'
Water Source		39° 52.081'	-111° 12.246'
Water Source		39° 51.095'	-111° 10.759'