

Air Operations Map

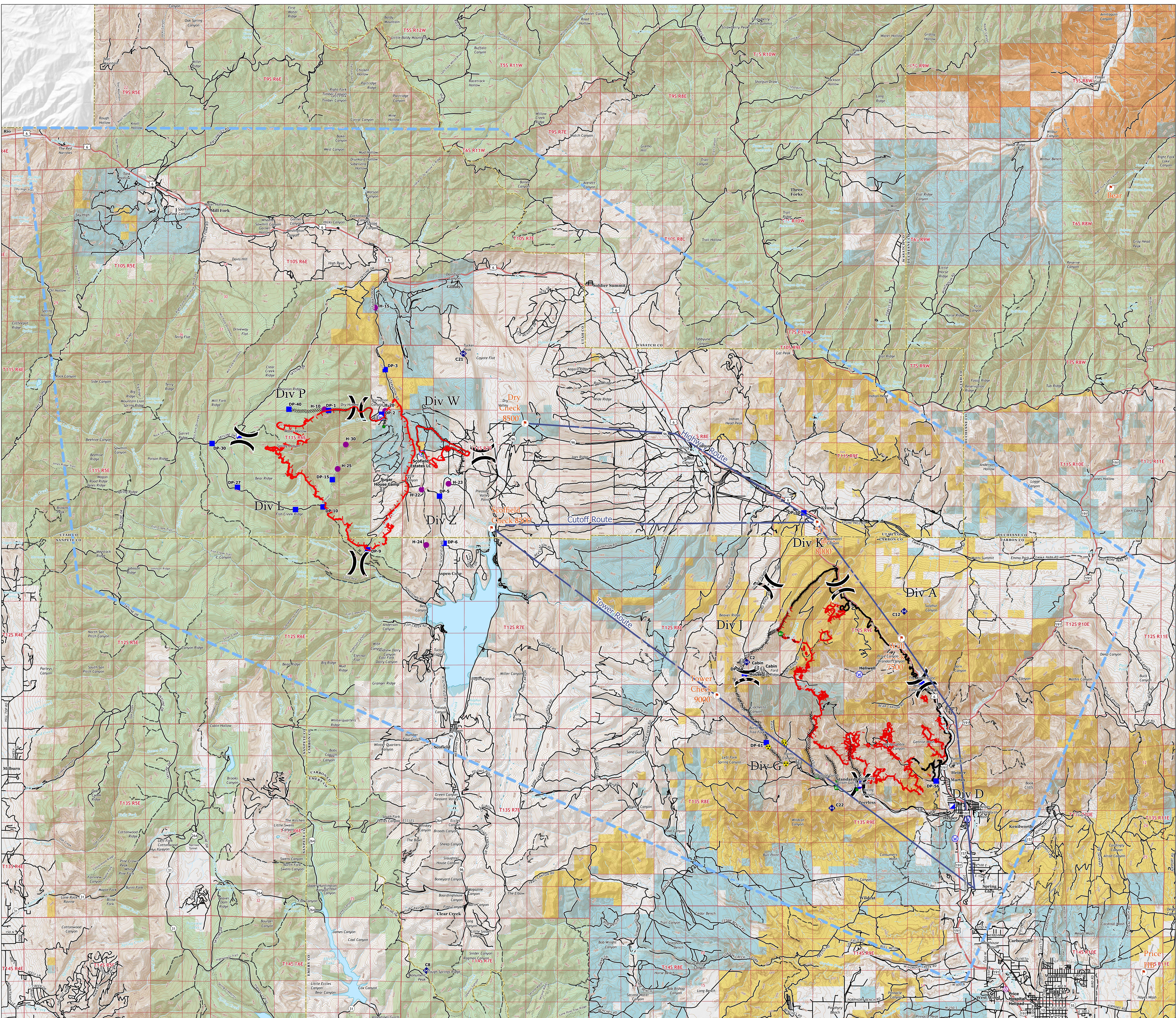
Bear and Bennion Fire

UT-VLD-000127
UT-MLF-000115

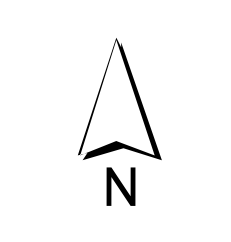
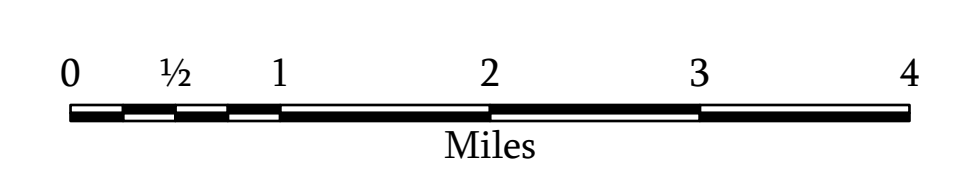
June 16, 2021



- Aerial Hazard
 - Dip Site
 - Helispot
 - Division Break
 - Incident Command Post
 - Drop Point
 - Value at Risk
 - Repair Point
 - Fence - Cut/Damaged
 - Repeater
 - Hazard
 - Water Source
 - Checkpoints
 - Helicopter Routes
 - Completed Dozer Line
 - Completed Hand Line
 - Access or Improved Road
 - Fire Edge
 - Contained Line
 - TFR: 1/2211
- Land Status**
- Bureau of Indian Affairs (BIA)
 - Bureau of Land Management (BLM)
 - State
 - US Forest Service (USFS)



Incident Name	PC Point Type	Label	Lat WGS	Long WGS
Bear	Incident Command Post	Price Hospital Helispot	39° 56.394	110° 49.999
Bear	Dip Site	Potential Helispot	39° 41.961	110° 55.185
Bear	Drop Point	DP-50	39° 49.809	110° 53.159
Bear	Drop Point	DP-53	39° 44.978	110° 52.963
Bear	Drop Point	DP-56	39° 42.100	110° 52.458
Bear	Drop Point	DP-59	39° 42.000	110° 53.173
Bear	Drop Point	DP-61	39° 43.100	110° 58.497
Bear	Drop Point	DP-64	39° 40.052	110° 59.229
Bear	Fence - Cut/Damaged		39° 45.110	110° 59.982
Bear	Fence - Cut/Damaged		39° 41.928	110° 55.995
Bear	Fence - Cut/Damaged		39° 42.229	110° 56.897
Bear	Hazard		39° 43.939	110° 59.996
Bear	Hazard		39° 43.176	110° 57.867
Bear	Hazard		39° 43.331	110° 59.897
Bear	Hazard		39° 43.040	110° 58.430
Bear	Incident Command Post		39° 41.410	110° 51.880
Bear	Repair Point		39° 42.100	110° 59.982
Bear	Repair Point		39° 41.872	110° 55.277
Bear	Repeater	C12	39° 46.763	110° 53.387
Bear	Repeater	C2	39° 46.309	110° 59.182
Bear	Repeater	C21	39° 53.840	111° 01.302
Bear	Repeater	C22	39° 41.780	110° 56.166
Bear	Repeater	C8	39° 50.391	111° 00.573
Bear	Water Source		39° 41.892	110° 51.342
Bear	Water Source		39° 40.938	110° 59.788
Bear	Water Source	Well	39° 45.032	110° 55.188
Bennion Creek	Drop Point	DP-1	39° 52.289	111° 14.107
Bennion Creek	Drop Point	DP-10	39° 49.610	111° 14.921
Bennion Creek	Drop Point	DP-15	39° 50.307	111° 13.961
Bennion Creek	Drop Point	DP-17	39° 52.107	111° 12.210
Bennion Creek	Drop Point	DP-25	39° 50.548	111° 09.251
Bennion Creek	Drop Point	DP-27	39° 50.148	111° 12.347
Bennion Creek	Drop Point	DP-28	39° 53.930	111° 08.687
Bennion Creek	Drop Point	DP-30	39° 51.330	111° 18.251
Bennion Creek	Drop Point	DP-40	39° 49.298	111° 15.519
Bennion Creek	Drop Point	DP-5	39° 49.610	111° 14.921
Bennion Creek	Drop Point	DP-6	39° 48.626	111° 09.909
Bennion Creek	Drop Point	DP-9	39° 48.442	111° 12.695
Bennion Creek	Helispot	H-10	39° 52.799	111° 12.841
Bennion Creek	Helispot	H-15	39° 53.096	111° 12.491
Bennion Creek	Helispot	H-20	39° 52.799	111° 12.841
Bennion Creek	Helispot	H-22	39° 50.183	111° 09.777
Bennion Creek	Helispot	H-23	39° 50.262	111° 09.829
Bennion Creek	Helispot	H-24	39° 48.948	111° 09.609
Bennion Creek	Helispot	H-25	39° 50.623	111° 13.777
Bennion Creek	Helispot	H-30	39° 51.331	111° 13.487
Bennion Creek	Incident Command Post		39° 51.510	111° 12.950
Bennion Creek	Repair Point		39° 51.831	111° 12.130
Bennion Creek	Repair Point		39° 51.188	111° 09.779
Bennion Creek	Water Source		39° 52.081	111° 12.242
Bennion Creek	Water Source		39° 51.095	111° 10.750



1:58,000

Name: NAD 1983 UTM Zone 12N