

Air Operations Map

Bear and Bennion Fire

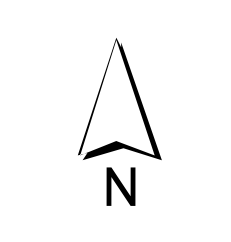
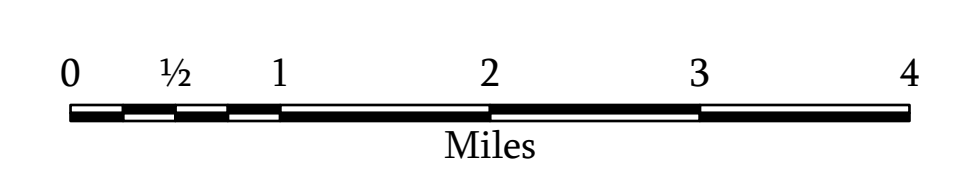
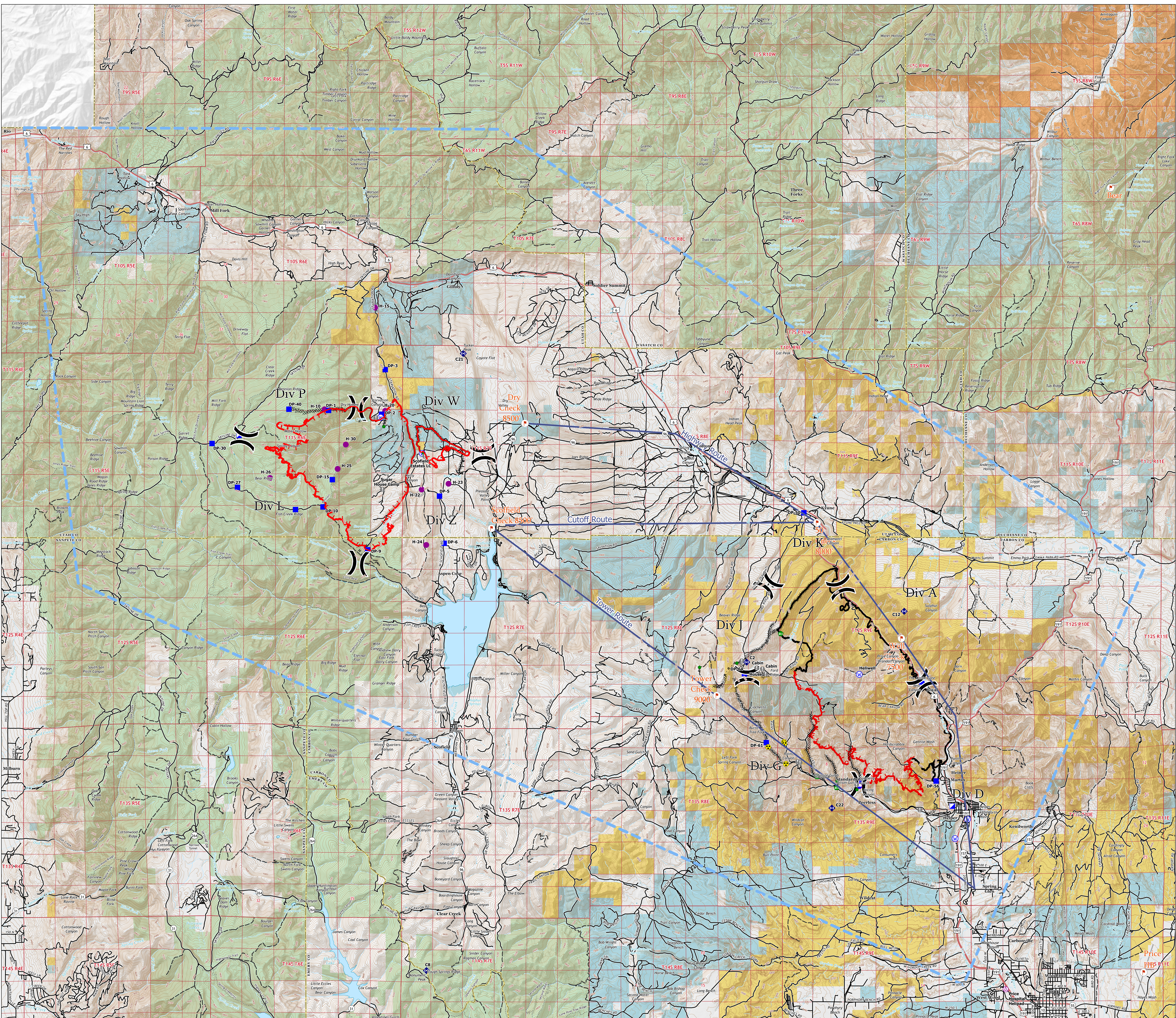
UT-VLD-000127
UT-MLF-000115

June 17, 2021



- Aerial Hazard
 - Dip Site
 - Helispot
 - Division Break
 - Incident Command Post
 - Drop Point
 - Value at Risk
 - Repair Point
 - Fence - Cut/Damaged
 - Hazard
 - Water Source
 - Checkpoints
 - Helicopter Routes
 - Completed Dozer Line
 - Completed Hand Line
 - Completed Road as Line
 - Access or Improved Road
 - Fire Edge
 - Contained Line
 - TFR: 1/2211
- Land Status**
- Bureau of Indian Affairs (BIA)
 - Bureau of Land Management (BLM)
 - State
 - US Forest Service (USFS)

Incident Name	FC Point Type	Label	Lat WGS84	Long WGS84
Bear	Aerial Hazard	Price Hospital Helispot	39°36.359'	-110°49.999'
Bear	Dip Site	Hellwell	39°41.961'	-110°55.186'
Bear	Drop Point	DP-30	39°49.470'	-110°57.157'
Bear	Drop Point	DP-53	39°44.778'	-110°52.963'
Bear	Drop Point	DP-56	39°42.100'	-110°52.838'
Bear	Drop Point	DP-59	39°42.078'	-110°55.173'
Bear	Drop Point	DP-61	39°43.160'	-110°58.497'
Bear	Drop Point	DP-64	39°45.052'	-110°59.275'
Bear	Incident Command Post		39°41.410'	-110°51.866'
Bear	Repeater	C12	39°46.763'	-110°53.587'
Bear	Repeater	C2	39°45.369'	-110°59.196'
Bear	Repeater	C21	39°53.840'	-111°9.302'
Bear	Repeater	C22	39°41.361'	-110°56.166'
Bear	Repeater	C8	39°36.891'	-111°10.572'
Bear	Water Source		39°41.052'	-110°51.342'
Bear	Water Source		39°40.518'	-110°51.287'
Bear	Water Source		39°45.052'	-110°55.186'
Bennion Creek	Drop Point	DP-1	39°52.269'	-111°14.102'
Bennion Creek	Drop Point	DP-10	39°49.617'	-111°14.291'
Bennion Creek	Drop Point	DP-15	39°50.267'	-111°13.961'
Bennion Creek	Drop Point	DP-17	39°52.167'	-111°12.101'
Bennion Creek	Drop Point	DP-25	39°49.543'	-111°15.271'
Bennion Creek	Drop Point	DP-27	39°50.148'	-111°17.340'
Bennion Creek	Drop Point	DP-3	39°53.392'	-111°12.884'
Bennion Creek	Drop Point	DP-30	39°51.350'	-111°18.251'
Bennion Creek	Drop Point	DP-40	39°52.298'	-111°15.515'
Bennion Creek	Drop Point	DP-5	39°49.921'	-111°10.140'
Bennion Creek	Drop Point	DP-6	39°48.626'	-111°9.907'
Bennion Creek	Drop Point	DP-9	39°48.442'	-111°12.695'
Bennion Creek	Helispot	H-10	39°52.299'	-111°14.244'
Bennion Creek	Helispot	H-15	39°55.096'	-111°12.451'
Bennion Creek	Helispot	H-20	39°52.259'	-111°12.882'
Bennion Creek	Helispot	H-22	39°50.103'	-111°10.777'
Bennion Creek	Helispot	H-23	39°50.262'	-111°9.820'
Bennion Creek	Helispot	H-24	39°48.580'	-111°10.609'
Bennion Creek	Helispot	H-25	39°50.668'	-111°13.772'
Bennion Creek	Helispot	H-26	39°50.410'	-111°16.180'
Bennion Creek	Helispot	H-30	39°51.331'	-111°13.483'
Bennion Creek	Incident Command Post		39°51.573'	-111°17.290'
Bennion Creek	Water Source		39°52.081'	-111°12.246'
Bennion Creek	Water Source		39°51.095'	-111°10.759'



1:58,000

Name: NAD 1983 UTM Zone 12N