

# Air Operations Map

## Bear and Bennion Fire

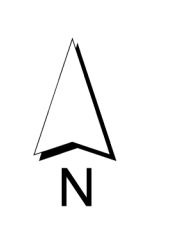
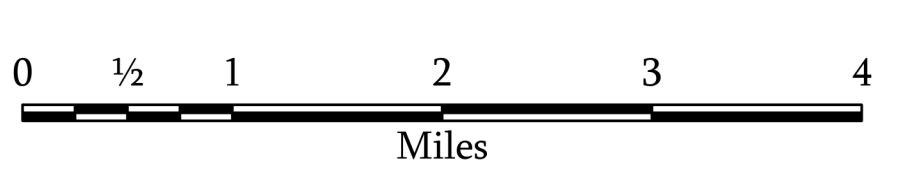
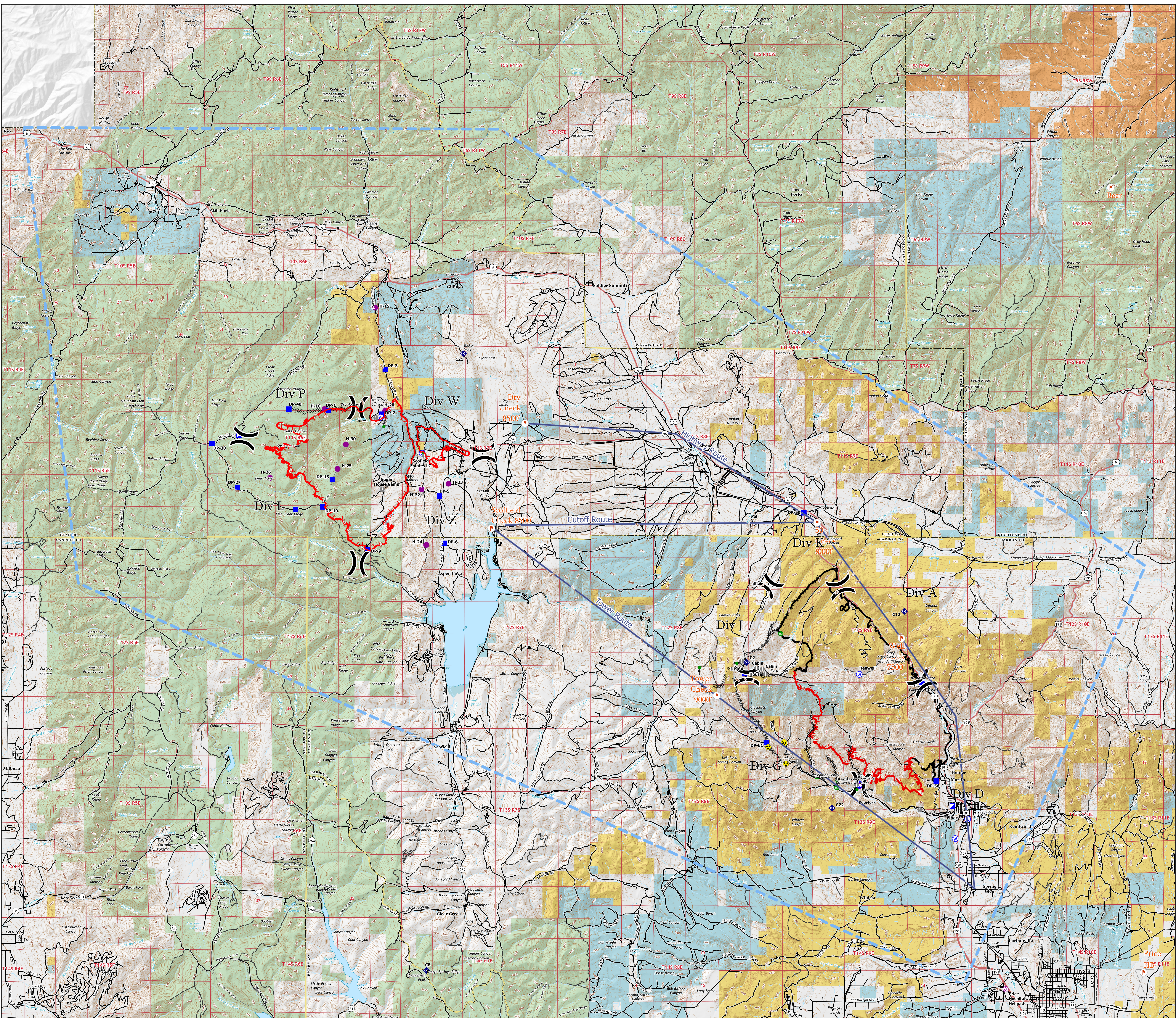
UT-VLD-000127  
UT-MLF-000115

June 17, 2021



- Aerial Hazard
  - Dip Site
  - Helispot
  - Division Break
  - Incident Command Post
  - Drop Point
  - Value at Risk
  - Repair Point
  - Fence - Cut/Damaged
  - Repeater
  - Hazard
  - Water Source
  - Checkpoints
  - Helicopter Routes
  - Completed Dozer Line
  - Completed Hand Line
  - Completed Road as Line
  - Access or Improved Road
  - Fire Edge
  - Contained Line
  - TFR: 1/2211
- Land Status**
- Bureau of Indian Affairs (BIA)
  - Bureau of Land Management (BLM)
  - State
  - US Forest Service (USFS)

Incident Name	FC Point Type*	Label	Price Hospital Helispot	UT WGS84	Long WGS84
Bear	Aerial Hazard	Helispot	39° 36.379'	-110° 49.997'	
Bear	Dip Site	Helispot	39° 41.961'	-110° 55.186'	
Bear	Drop Point	DP-50	39° 49.470'	-110° 57.157'	
Bear	Drop Point	DP-53	39° 44.778'	-110° 52.963'	
Bear	Drop Point	DP-56	39° 42.100'	-110° 52.538'	
Bear	Drop Point	DP-59	39° 42.078'	-110° 55.173'	
Bear	Drop Point	DP-61	39° 43.160'	-110° 58.499'	
Bear	Drop Point	DP-64	39° 45.052'	-110° 59.275'	
Bear	Incident Command Post		39° 41.410'	-110° 51.886'	
Bear	Repeater	C12	39° 46.763'	-110° 53.587'	
Bear	Repeater	C2	39° 45.369'	-110° 59.196'	
Bear	Repeater	C21	39° 53.840'	-111° 9.302'	
Bear	Repeater	C22	39° 41.961'	-110° 56.166'	
Bear	Repeater	C8	39° 36.891'	-111° 10.572'	
Bear	Water Source		39° 41.052'	-110° 51.342'	
Bear	Water Source		39° 40.518'	-110° 51.787'	
Bear	Water Source	Helispot	39° 45.052'	-110° 55.186'	
Bennion Creek	Drop Point	DP-1	39° 52.269'	-111° 14.102'	
Bennion Creek	Drop Point	DP-10	39° 49.617'	-111° 14.291'	
Bennion Creek	Drop Point	DP-15	39° 50.267'	-111° 13.561'	
Bennion Creek	Drop Point	DP-7	39° 52.167'	-111° 12.010'	
Bennion Creek	Drop Point	DP-25	39° 49.543'	-111° 15.271'	
Bennion Creek	Drop Point	DP-27	39° 50.148'	-111° 17.340'	
Bennion Creek	Drop Point	DP-3	39° 53.592'	-111° 12.849'	
Bennion Creek	Drop Point	DP-30	39° 51.350'	-111° 18.251'	
Bennion Creek	Drop Point	DP-40	39° 52.298'	-111° 15.515'	
Bennion Creek	Drop Point	DP-5	39° 49.921'	-111° 10.140'	
Bennion Creek	Drop Point	DP-6	39° 48.626'	-111° 9.997'	
Bennion Creek	Drop Point	DP-9	39° 48.442'	-111° 12.695'	
Bennion Creek	Helispot	H-10	39° 52.299'	-111° 14.244'	
Bennion Creek	Helispot	H-15	39° 55.096'	-111° 12.451'	
Bennion Creek	Helispot	H-20	39° 52.259'	-111° 12.882'	
Bennion Creek	Helispot	H-22	39° 50.103'	-111° 10.277'	
Bennion Creek	Helispot	H-23	39° 50.262'	-111° 9.820'	
Bennion Creek	Helispot	H-24	39° 48.580'	-111° 10.609'	
Bennion Creek	Helispot	H-25	39° 50.668'	-111° 13.772'	
Bennion Creek	Helispot	H-26	39° 50.410'	-111° 16.180'	
Bennion Creek	Helispot	H-30	39° 51.331'	-111° 13.483'	
Bennion Creek	Incident Command Post		39° 51.573'	-111° 17.290'	
Bennion Creek	Water Source		39° 52.081'	-111° 12.446'	
Bennion Creek	Water Source		39° 51.095'	-111° 10.759'	



1:58,000

Name: NAD 1983 UTM Zone 12N