

# Transportation Map

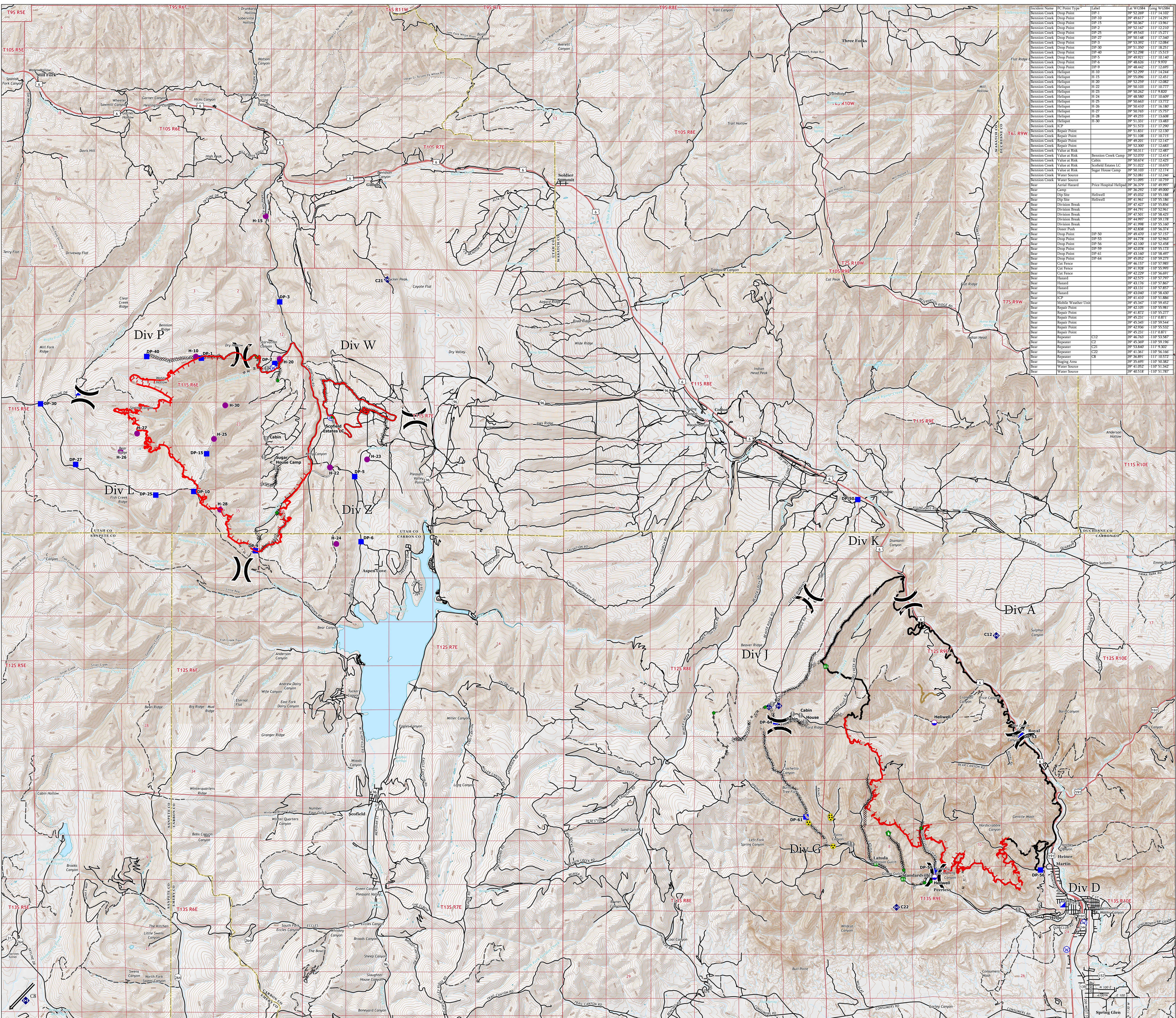
## Bear and Bennion Fire

UT-VLD-000127  
UT-MLF-000115

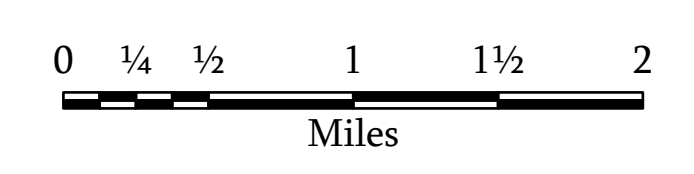
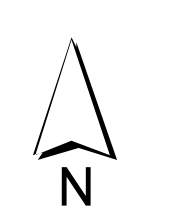
June 18, 2021



- Dip Site
- Helispot
- X Division Break
- Incident Command Post
- Drop Point
- Value at Risk
- Repair Point
- Fence - Cut/Damaged
- Dozer Push
- Mobile Weather Unit
- Repeater
- Hazard
- Water Source
- Completed Dozer Line
- Completed Hand Line
- Completed Road as Line
- Access or Improved Road
- Repair Line
- Fire Edge
- Contained Line
- Transportation
- Highway
- Road
- 4WD Road
- Trail
- Event Polygon
- Other
- Prescribed Fire
- Wildfire Daily Fire Perimeter



Incident Name	IC Point Type	Label	Lat WGS84	Long WGS84	
Bennion Creek	Drop Point	DP-1	39°52'20"	-111°17'41"	
Bennion Creek	Drop Point	DP-10	39°49'41"	-111°14'29"	
Bennion Creek	Drop Point	DP-15	39°50'36"	-111°13'06"	
Bennion Creek	Drop Point	DP-2	39°51'29"	-111°12'30"	
Bennion Creek	Drop Point	DP-25	39°49'54"	-111°15'21"	
Bennion Creek	Drop Point	DP-27	39°50'18"	-111°17'40"	
Bennion Creek	Drop Point	DP-3	39°51'29"	-111°12'30"	
Bennion Creek	Drop Point	DP-30	39°51'30"	-111°18'25"	
Bennion Creek	Drop Point	DP-40	39°52'20"	-111°17'41"	
Bennion Creek	Drop Point	DP-5	39°49'51"	-111°10'14"	
Bennion Creek	Drop Point	DP-6	39°48'22"	-111°9'59"	
Bennion Creek	Drop Point	DP-9	39°48'44"	-111°12'29"	
Bennion Creek	Helispot	H-10	39°52'29"	-111°14'24"	
Bennion Creek	Helispot	H-15	39°50'06"	-111°12'45"	
Bennion Creek	Helispot	H-20	39°52'29"	-111°12'45"	
Bennion Creek	Helispot	H-22	39°50'10"	-111°10'27"	
Bennion Creek	Helispot	H-23	39°51'29"	-111°12'30"	
Bennion Creek	Helispot	H-24	39°48'50"	-111°10'09"	
Bennion Creek	Helispot	H-25	39°50'26"	-111°13'22"	
Bennion Creek	Helispot	H-26	39°51'29"	-111°12'30"	
Bennion Creek	Helispot	H-27	39°50'76"	-111°15'27"	
Bennion Creek	Helispot	H-28	39°49'25"	-111°13'08"	
Bennion Creek	Helispot	H-30	39°51'29"	-111°12'30"	
Bennion Creek	ICP	ICP	39°51'57"	-111°17'29"	
Bennion Creek	Repair Point	RP-10	39°51'29"	-111°12'30"	
Bennion Creek	Repair Point	RP-15	39°51'10"	-111°10'15"	
Bennion Creek	Repair Point	RP-20	39°49'20"	-111°12'17"	
Bennion Creek	Repair Point	RP-30	39°50'31"	-111°12'48"	
Bennion Creek	Repair Point	RP-40	39°52'07"	-111°12'41"	
Bennion Creek	Value at Risk	Bennion Creek Camp	39°52'07"	-111°12'41"	
Bennion Creek	Value at Risk	39°51'02"	-111°10'29"		
Bennion Creek	Value at Risk	Scotfield Estates LC	39°50'10"	-111°12'17"	
Bennion Creek	Value at Risk	Sugar House Camp	39°51'29"	-111°12'30"	
Bennion Creek	Water Source	39°51'29"	-111°10'15"		
Bennion Creek	Water Source	39°51'09"	-111°10'27"		
Bennion Creek	Water Source	39°51'29"	-111°10'15"		
Bear	General Hazard	Price Hospital Helispot	39°52'29"	-111°17'41"	
Bear	Drop Point	Helispot	39°49'02"	-110°58'18"	
Bear	Drop Point	Helispot	39°48'44"	-110°58'18"	
Bear	Division Break	39°47'42"	-110°55'85"		
Bear	Division Break	39°44'29"	-110°52'06"		
Bear	Division Break	39°43'51"	-110°54'52"		
Bear	Division Break	39°44'09"	-110°52'17"		
Bear	Division Break	39°43'29"	-110°51'10"		
Bear	Drop Point	39°42'88"	-110°56'37"		
Bear	Drop Point	39°42'49"	-110°57'15"		
Bear	Drop Point	39°42'78"	-110°57'55"		
Bear	Drop Point	39°42'100"	-110°52'45"		
Bear	Drop Point	39°42'078"	-110°57'174"		
Bear	Drop Point	39°41'156"	-110°58'49"		
Bear	Drop Point	39°41'052"	-110°59'276"		
Bear	Cut Fence	39°43'129"	-110°57'488"		
Bear	Cut Fence	39°43'229"	-110°56'691"		
Bear	Cut Fence	39°43'575"	-110°57'299"		
Bear	Hazard	39°43'176"	-110°57'867"		
Bear	Hazard	39°43'131"	-110°57'857"		
Bear	Hazard	39°43'048"	-110°58'484"		
Bear	ICP	39°41'410"	-110°51'886"		
Bear	Mobile Weather Unit	39°45'347"	-110°59'452"		
Bear	Repeater	39°42'109"	-110°58'941"		
Bear	Repeater	39°41'872"	-110°58'277"		
Bear	Repeater	39°42'233"	-110°57'071"		
Bear	Repeater	39°45'445"	-110°59'544"		
Bear	Repeater	39°42'856"	-110°55'532"		
Bear	Repeater	39°43'231"	-110°57'871"		
Bear	Repeater	C12	39°46'763"	-110°55'587"	
Bear	Repeater	C2	39°45'369"	-110°59'136"	
Bear	Repeater	C21	39°45'848"	-110°58'300"	
Bear	Repeater	C22	39°41'361"	-110°56'160"	
Bear	Repeater	C8	39°58'881"	-111°05'274"	
Bear	Repeater	C8	39°55'095"	-110°50'384"	
Bear	Water Source	39°41'052"	-110°51'842"		
Bear	Water Source	39°40'518"	-110°51'789"		



1:33,000

Name: NAD 1983 UTM Zone 12N