

# Transportation Map

## Bennion Fire

UT-VLD-000115

June 18, 2021

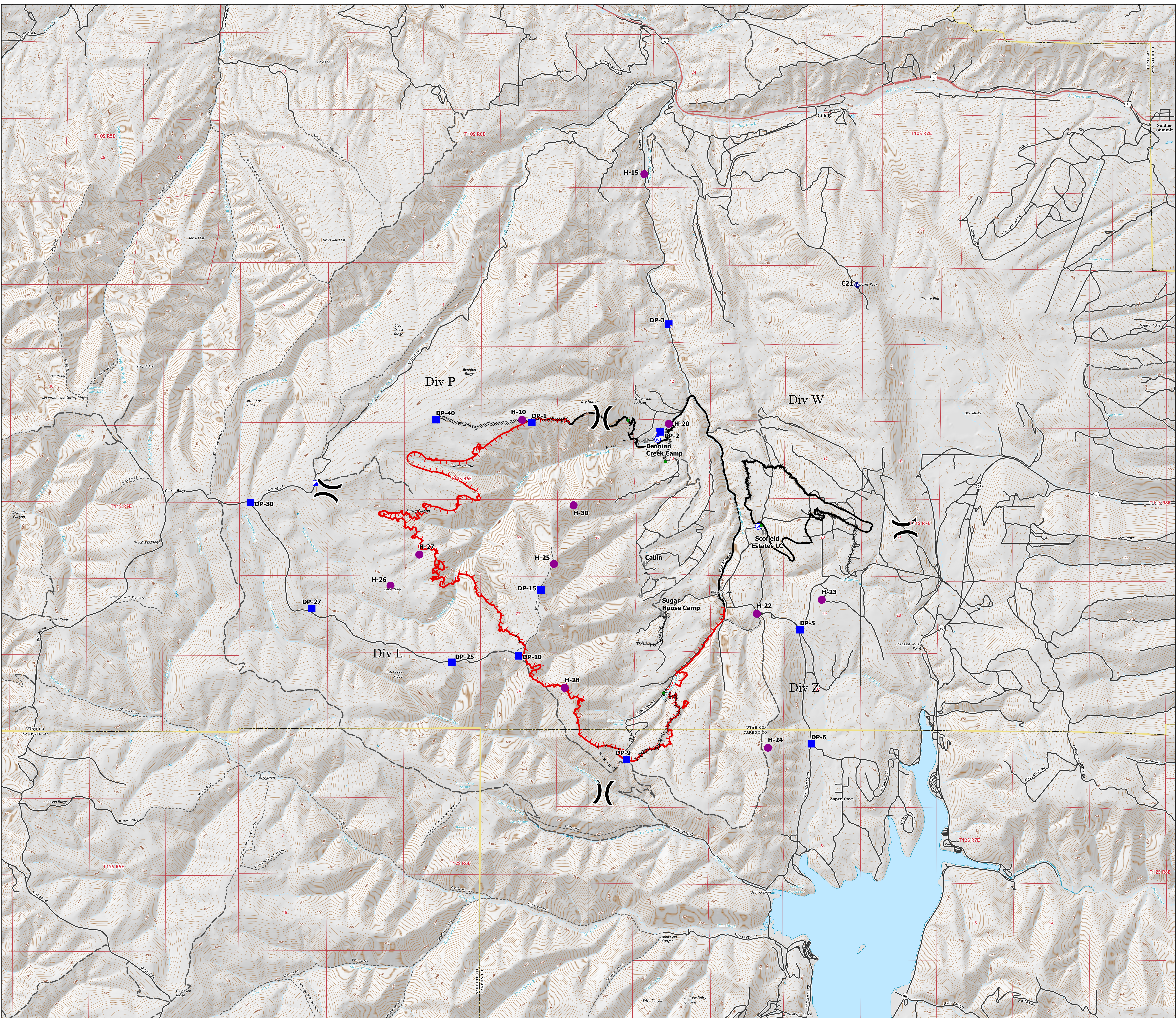


Incident Management Team

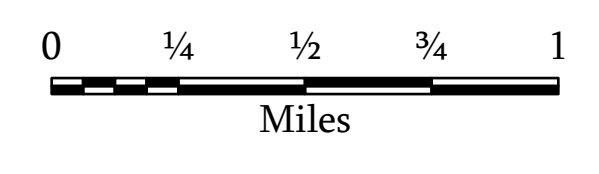
8,313 Acres

IR Flight at 0225 hours on 6/18

- Air Operations**
- Helispot
- Assignment Breaks**
- ⊗ Division Break
- Logistics**
- ▣ Incident Command Post
- Drop Point
- Reference**
- ⊕ Value at Risk
- Repair**
- Repair Point
- Communications**
- ⚡ Repeater
- Water**
- ⊕ Water Source
- Ops Completed**
- ▬ Completed Dozer Line
- ▬ Completed Hand Line
- ▬ Completed Road as Line
- Reference**
- ▬ Access or Improved Road
- Fire Perimeter**
- ▬ Fire Edge
- ▬ Contained Line
- Transportation**
- ▬ Highway
- ▬ Road
- ▬ 4WD Road
- ▬ Trail



ICP Point Type*	Label	Lat WGS84	Long WGS84
Drop Point	DP-1	39° 52.269'	-111° 14.102'
Drop Point	DP-10	39° 49.617'	-111° 14.291'
Drop Point	DP-15	39° 50.367'	-111° 13.961'
Drop Point	DP-2	39° 52.167'	-111° 12.210'
Drop Point	DP-25	39° 49.543'	-111° 15.271'
Drop Point	DP-27	39° 50.188'	-111° 17.340'
Drop Point	DP-3	39° 53.392'	-111° 12.084'
Drop Point	DP-30	39° 51.350'	-111° 18.251'
Drop Point	DP-40	39° 52.298'	-111° 15.515'
Drop Point	DP-5	39° 49.921'	-111° 10.140'
Drop Point	DP-6	39° 48.626'	-111° 9.970'
Drop Point	DP-9	39° 48.442'	-111° 12.695'
Helispot	H-10	39° 52.299'	-111° 14.244'
Helispot	H-15	39° 55.096'	-111° 12.451'
Helispot	H-20	39° 52.259'	-111° 12.082'
Helispot	H-22	39° 50.103'	-111° 10.777'
Helispot	H-23	39° 50.202'	-111° 9.820'
Helispot	H-24	39° 48.580'	-111° 10.609'
Helispot	H-25	39° 50.663'	-111° 13.772'
Helispot	H-26	39° 50.410'	-111° 16.180'
Helispot	H-27	39° 50.765'	-111° 15.757'
Helispot	H-28	39° 49.255'	-111° 13.608'
Helispot	H-30	39° 51.331'	-111° 13.483'
ICP		39° 51.573'	-111° 17.290'
Repair Point		39° 51.831'	-111° 12.130'
Repair Point		39° 51.108'	-111° 10.715'
Repair Point		39° 49.201'	-111° 12.149'
Repair Point		39° 52.300'	-111° 12.683'
Value at Risk		39° 50.311'	-111° 12.487'
Value at Risk	Bennion Creek Camp	39° 52.070'	-111° 12.414'
Value at Risk	Cabin	39° 50.674'	-111° 12.425'
Value at Risk	Scofield Estates LC	39° 51.022'	-111° 10.670'
Value at Risk	Sugar House Camp	39° 50.103'	-111° 12.174'
Water Source		39° 52.081'	-111° 12.246'
Water Source		39° 51.095'	-111° 10.759'



1:24,000

Name: NAD 1983 UTM Zone 12N