

Transportation Map

Bear and Bennion Fire

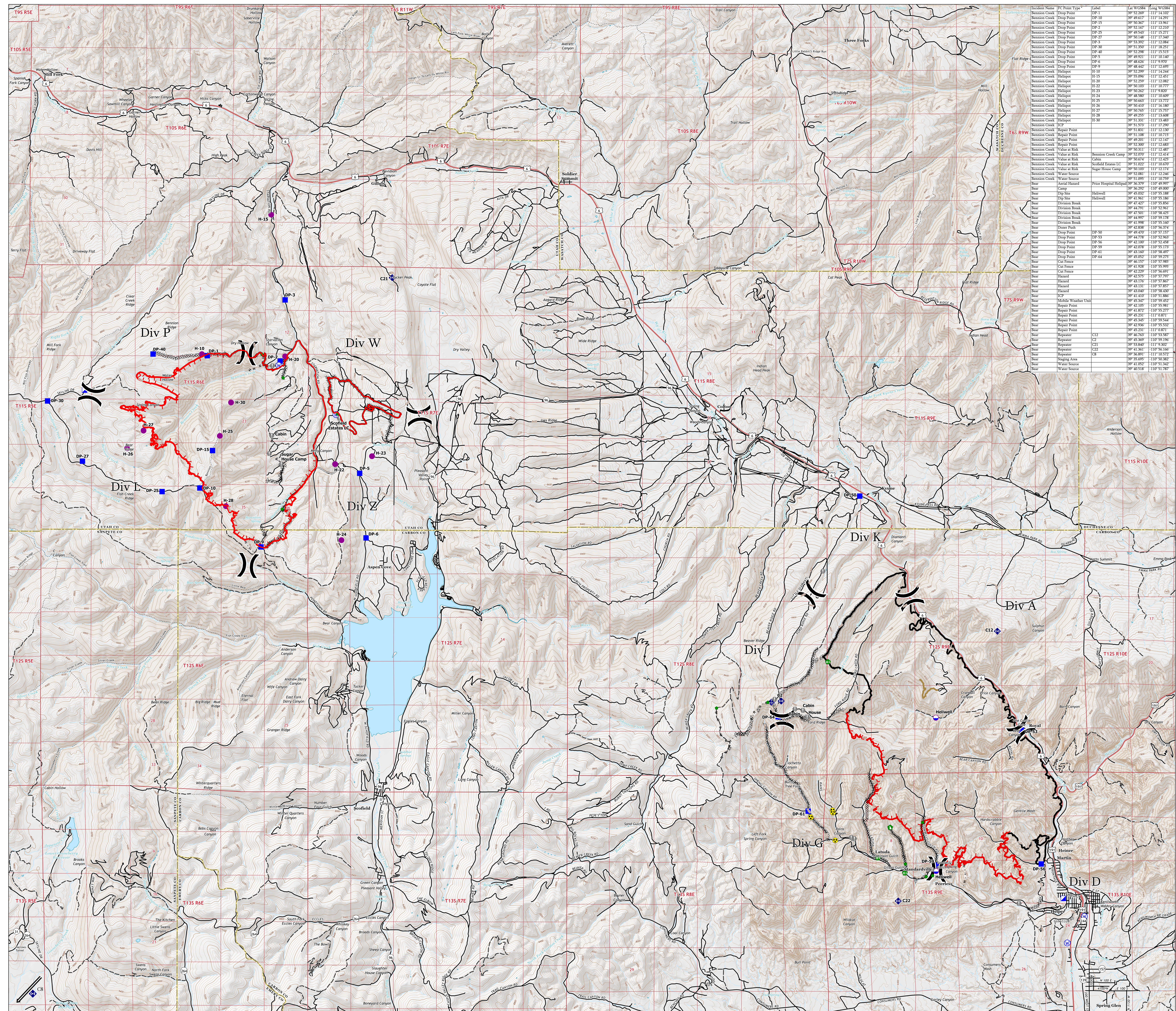
UT-VLD-000127

UT-MLF-000115

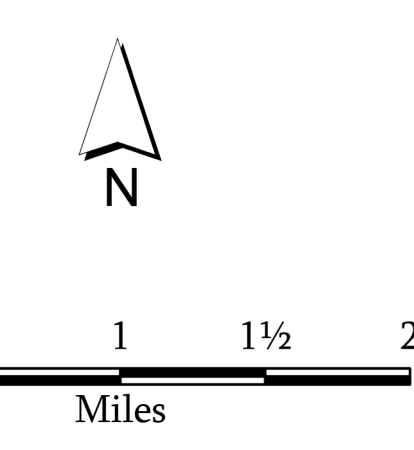
June 18, 2021



- Dip Site
- Helispot
- X Division Break
- Incident Command Post
- Drop Point
- Value at Risk
- Repair Point
- Fence - Cut/Damaged
- Dozer Push
- ♦ Mobile Weather Unit
- ♦ Repeater
- Hazard
- Water Source
- ⊗ Completed Dozer Line
- Completed Hand Line
- Completed Road as Line
- Access or Improved Road
- Repair Line
- Fire Edge
- Contained Line
- Transportation**
- Highway
- Road
- 4WD Road
- Trail
- Event Polygon**
- Other
- Prescribed Fire
- Wildfire Daily Fire Perimeter



Incident Name	IC Point Type	Label	Lat WGS84	Long WGS84
Bennion Creek	Drop Point	DP-1	39°52'20"	-111°12'11"
Bennion Creek	Drop Point	DP-10	39°49'41"	-111°14'29"
Bennion Creek	Drop Point	DP-15	39°50'36"	-111°13'06"
Bennion Creek	Drop Point	DP-2	39°51'18"	-111°12'20"
Bennion Creek	Drop Point	DP-25	39°49'53"	-111°15'21"
Bennion Creek	Drop Point	DP-27	39°51'38"	-111°12'38"
Bennion Creek	Drop Point	DP-3	39°53'39"	-111°12'04"
Bennion Creek	Drop Point	DP-30	39°51'35"	-111°18'25"
Bennion Creek	Drop Point	DP-40	39°52'28"	-111°15'51"
Bennion Creek	Drop Point	DP-5	39°49'21"	-111°10'14"
Bennion Creek	Drop Point	DP-6	39°48'26"	-111°9'59"
Bennion Creek	Drop Point	DP-8	39°48'42"	-111°9'28"
Bennion Creek	Helispot	H-10	39°52'29"	-111°14'24"
Bennion Creek	Helispot	H-15	39°53'06"	-111°12'45"
Bennion Creek	Helispot	H-20	39°52'25"	-111°12'02"
Bennion Creek	Helispot	H-22	39°50'10"	-111°10'77"
Bennion Creek	Helispot	H-23	39°52'25"	-111°12'02"
Bennion Creek	Helispot	H-24	39°48'50"	-111°10'60"
Bennion Creek	Helispot	H-25	39°50'26"	-111°13'72"
Bennion Creek	Helispot	H-26	39°51'28"	-111°12'02"
Bennion Creek	Helispot	H-27	39°50'26"	-111°15'25"
Bennion Creek	Helispot	H-28	39°49'25"	-111°13'08"
Bennion Creek	Helispot	H-30	39°51'31"	-111°12'30"
Bennion Creek	Repair Point	RP-1	39°51'37"	-111°12'20"
Bennion Creek	Repair Point	RP-2	39°51'38"	-111°12'02"
Bennion Creek	Repair Point	RP-3	39°51'10"	-111°10'15"
Bennion Creek	Repair Point	RP-40	39°49'20"	-111°12'12"
Bennion Creek	Repair Point	RP-41	39°51'30"	-111°12'02"
Bennion Creek	Value at Risk	Value at Risk	39°50'31"	-111°12'48"
Bennion Creek	Value at Risk	Bennion Creek Camp	39°52'07"	-111°12'14"
Bennion Creek	Value at Risk	Value at Risk	39°51'02"	-111°10'60"
Bennion Creek	Value at Risk	Value at Risk	39°50'10"	-111°12'14"
Bennion Creek	Water Source	Sugar House Camp	39°51'09"	-111°10'79"
Bennion Creek	Water Source	Price Hospital Helispot	39°48'29"	-111°9'59"
Bear	Area Hazard	Area Hazard	39°56'29"	-110°49'00"
Bear	Dip Site	Helispot	39°45'02"	-110°55'18"
Bear	Dip Site	Helispot	39°43'50"	-110°56'18"
Bear	Division Break	Division Break	39°47'42"	-110°55'85"
Bear	Division Break	Division Break	39°44'29"	-110°52'26"
Bear	Division Break	Division Break	39°43'31"	-110°52'42"
Bear	Division Break	Division Break	39°44'97"	-110°52'17"
Bear	Division Break	Division Break	39°43'29"	-110°51'80"
Bear	Division Break	Division Break	39°42'88"	-110°56'37"
Bear	Drop Point	DP-50	39°49'49"	-110°57'15"
Bear	Drop Point	DP-53	39°43'78"	-110°53'26"
Bear	Drop Point	DP-56	39°42'10"	-110°52'48"
Bear	Drop Point	DP-59	39°42'07"	-110°53'17"
Bear	Drop Point	DP-61	39°43'16"	-110°58'49"
Bear	Drop Point	DP-64	39°43'02"	-110°59'27"
Bear	Cut Fence	Cut Fence	39°45'29"	-110°52'48"
Bear	Cut Fence	Cut Fence	39°45'29"	-110°52'48"
Bear	Cut Fence	Cut Fence	39°42'29"	-110°56'01"
Bear	Hazard	Hazard	39°43'25"	-110°57'29"
Bear	Hazard	Hazard	39°43'17"	-110°57'46"
Bear	Hazard	Hazard	39°43'11"	-110°57'46"
Bear	ICP	ICP	39°41'40"	-110°51'88"
Bear	Mobile Weather Unit	Mobile Weather Unit	39°43'34"	-110°53'45"
Bear	Repair Point	Repair Point	39°42'10"	-110°58'49"
Bear	Repair Point	Repair Point	39°41'87"	-110°59'27"
Bear	Repair Point	Repair Point	39°43'23"	-110°57'07"
Bear	Repair Point	Repair Point	39°45'44"	-110°59'54"
Bear	Repair Point	Repair Point	39°42'56"	-110°55'52"
Bear	Repair Point	Repair Point	39°43'21"	-110°57'07"
Bear	Repeater	C13	39°46'26"	-110°53'58"
Bear	Repeater	C2	39°45'30"	-110°55'18"
Bear	Repeater	C21	39°45'40"	-110°53'30"
Bear	Repeater	C22	39°41'36"	-110°56'16"
Bear	Repeater	C8	39°45'81"	-111°02'57"
Bear	Repeater	C8	39°35'05"	-110°50'38"
Bear	Water Source	Water Source	39°41'05"	-110°51'34"
Bear	Water Source	Water Source	39°40'51"	-110°51'70"



1:33,000

Name: NAD 1983 UTM Zone 12N