

# Air Operations Map

## Bear and Bennion Fire

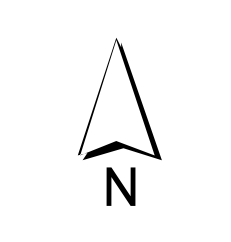
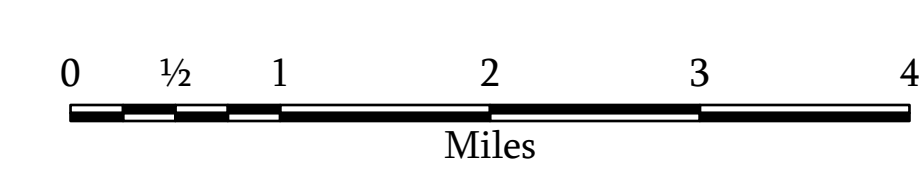
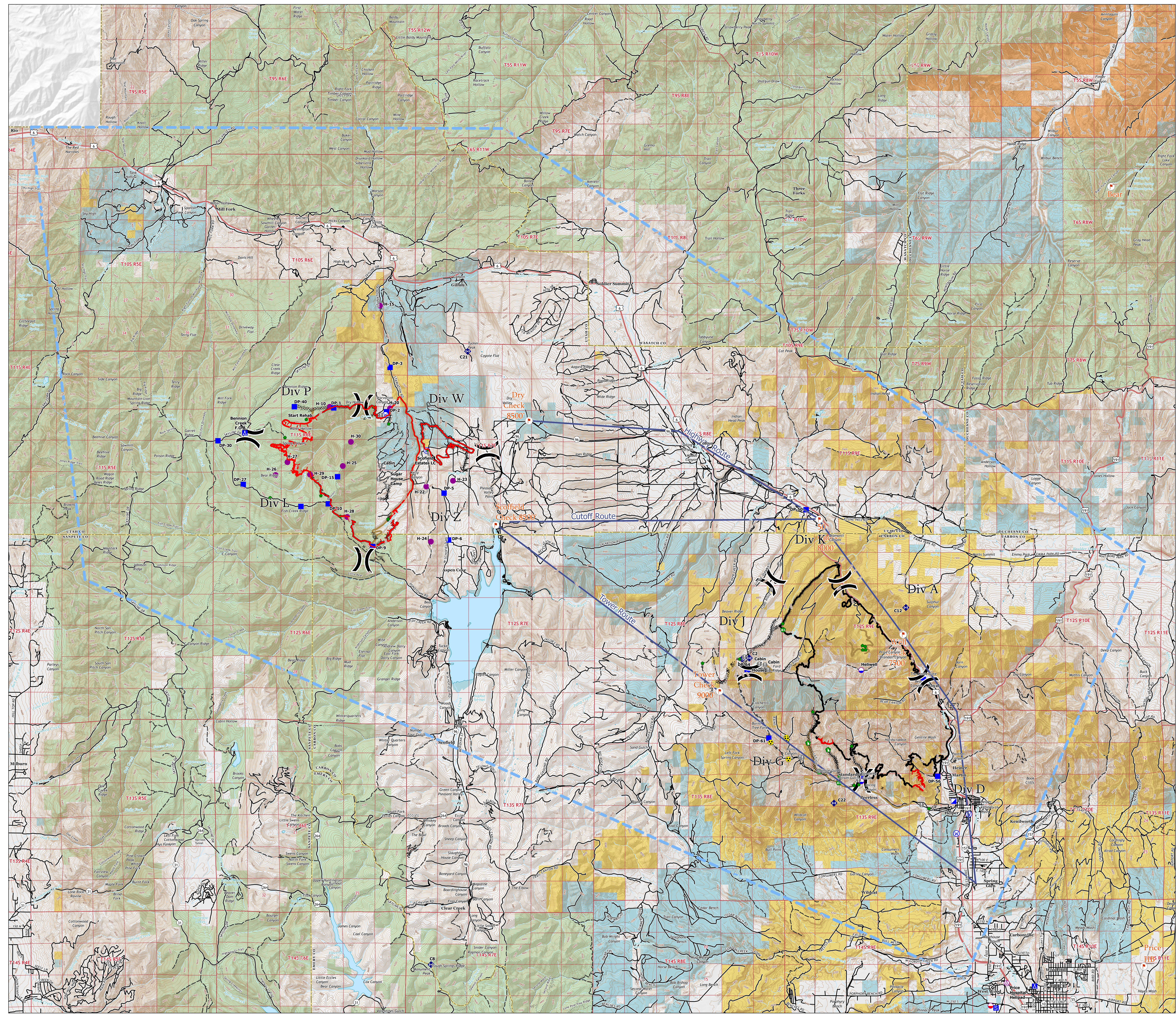
UT-VLD-000127  
UT-MLF-000115

June 21, 2021



- Aerial Hazard
  - Dip Site
  - Mobile Retardant Base
  - Helispot
  - Division Break
  - Incident Command Post
  - Drop Point
  - Camp
  - Staging Area
  - Value at Risk
  - Repair Point
  - Fence - Cut/Damaged
  - Dozer Push
  - Mobile Weather Unit
  - Repeater
  - Hazard
  - Water Source
  - Checkpoints
  - Helicopter Routes
  - Completed Dozer Line
  - Completed Hand Line
  - Completed Road as Line
  - Access or Improved Road
  - Repair Line
  - Fire Edge
  - Contained Line
  - TFR: I/2211
- Land Status**
- Bureau of Indian Affairs (BIA)
  - Bureau of Land Management (BLM)
  - State
  - US Forest Service (USFS)

| Incident Name | Point Type            | Label                   | Lat WGS84   | Long WGS84    |
|---------------|-----------------------|-------------------------|-------------|---------------|
| Bennion Creek | Camp                  | Bennion Creek P.O.B.    | 39° 51.975' | -111° 17.290' |
| Bennion Creek | Drop Point            | DP-1                    | 39° 52.269' | -111° 14.102' |
| Bennion Creek | Drop Point            | DP-10                   | 39° 49.617' | -111° 14.291' |
| Bennion Creek | Drop Point            | DP-15                   | 39° 50.367' | -111° 13.961' |
| Bennion Creek | Drop Point            | DP-2                    | 39° 52.167' | -111° 12.010' |
| Bennion Creek | Drop Point            | DP-25                   | 39° 49.543' | -111° 15.271' |
| Bennion Creek | Drop Point            | DP-27                   | 39° 50.148' | -111° 17.340' |
| Bennion Creek | Drop Point            | DP-3                    | 39° 53.392' | -111° 12.084' |
| Bennion Creek | Drop Point            | DP-30                   | 39° 51.350' | -111° 18.251' |
| Bennion Creek | Drop Point            | DP-40                   | 39° 52.298' | -111° 15.515' |
| Bennion Creek | Drop Point            | DP-5                    | 39° 49.921' | -111° 10.140' |
| Bennion Creek | Drop Point            | DP-6                    | 39° 48.626' | -111° 9.970'  |
| Bennion Creek | Drop Point            | DP-9                    | 39° 48.442' | -111° 12.095' |
| Bennion Creek | Drop Point            | DP-10                   | 39° 52.299' | -111° 14.244' |
| Bennion Creek | Helispot              | H-15                    | 39° 55.096' | -111° 12.451' |
| Bennion Creek | Helispot              | H-20                    | 39° 52.259' | -111° 12.082' |
| Bennion Creek | Helispot              | H-22                    | 39° 50.103' | -111° 10.797' |
| Bennion Creek | Helispot              | H-23                    | 39° 50.262' | -111° 9.820'  |
| Bennion Creek | Helispot              | H-24                    | 39° 48.580' | -111° 10.609' |
| Bennion Creek | Helispot              | H-25                    | 39° 50.663' | -111° 13.772' |
| Bennion Creek | Helispot              | H-26                    | 39° 50.419' | -111° 16.180' |
| Bennion Creek | Helispot              | H-27                    | 39° 50.765' | -111° 15.757' |
| Bennion Creek | Helispot              | H-28                    | 39° 49.255' | -111° 13.608' |
| Bennion Creek | Helispot              | H-30                    | 39° 51.331' | -111° 13.483' |
| Bennion Creek | Water Source          |                         | 39° 53.081' | -111° 12.746' |
| Bennion Creek | Water Source          |                         | 39° 51.095' | -111° 10.759' |
| Bear          | Aerial Hazard         | Price Hospital Helispot | 39° 36.379' | -110° 49.999' |
| Bear          | Camp                  |                         | 39° 36.292' | -110° 49.000' |
| Bear          | Dip Site              | Helifield               | 39° 45.052' | -110° 55.188' |
| Bear          | Dip Site              | Helifield               | 39° 41.961' | -110° 55.186' |
| Bear          | Dozer Push            |                         | 39° 42.838' | -110° 56.374' |
| Bear          | Dozer Push            |                         | 39° 43.027' | -110° 57.094' |
| Bear          | Drop Point            | DP-50                   | 39° 49.420' | -110° 59.159' |
| Bear          | Drop Point            | DP-53                   | 39° 44.778' | -110° 52.963' |
| Bear          | Drop Point            | DP-56                   | 39° 42.100' | -110° 52.458' |
| Bear          | Drop Point            | DP-59                   | 39° 42.078' | -110° 55.173' |
| Bear          | Drop Point            | DP-61                   | 39° 43.160' | -110° 58.097' |
| Bear          | Drop Point            | DP-64                   | 39° 45.052' | -110° 59.275' |
| Bear          | Incident Command Post |                         | 39° 41.410' | -110° 51.886' |
| Bear          | Repeater              | C12                     | 39° 46.763' | -110° 53.809' |
| Bear          | Repeater              | C2                      | 39° 45.369' | -110° 59.196' |
| Bear          | Repeater              | C21                     | 39° 53.840' | -111° 9.302'  |
| Bear          | Repeater              | C22                     | 39° 41.361' | -110° 56.166' |
| Bear          | Repeater              | C8                      | 39° 36.891' | -110° 57.972' |
| Bear          | Staging Area          |                         | 39° 35.695' | -110° 50.382' |
| Bear          | Water Source          |                         | 39° 41.052' | -110° 51.342' |
| Bear          | Water Source          |                         | 39° 40.518' | -110° 51.287' |



1:58,000

Name: NAD 1983 UTM Zone 12N