

Transportation Map

Bear and Bennion Fire

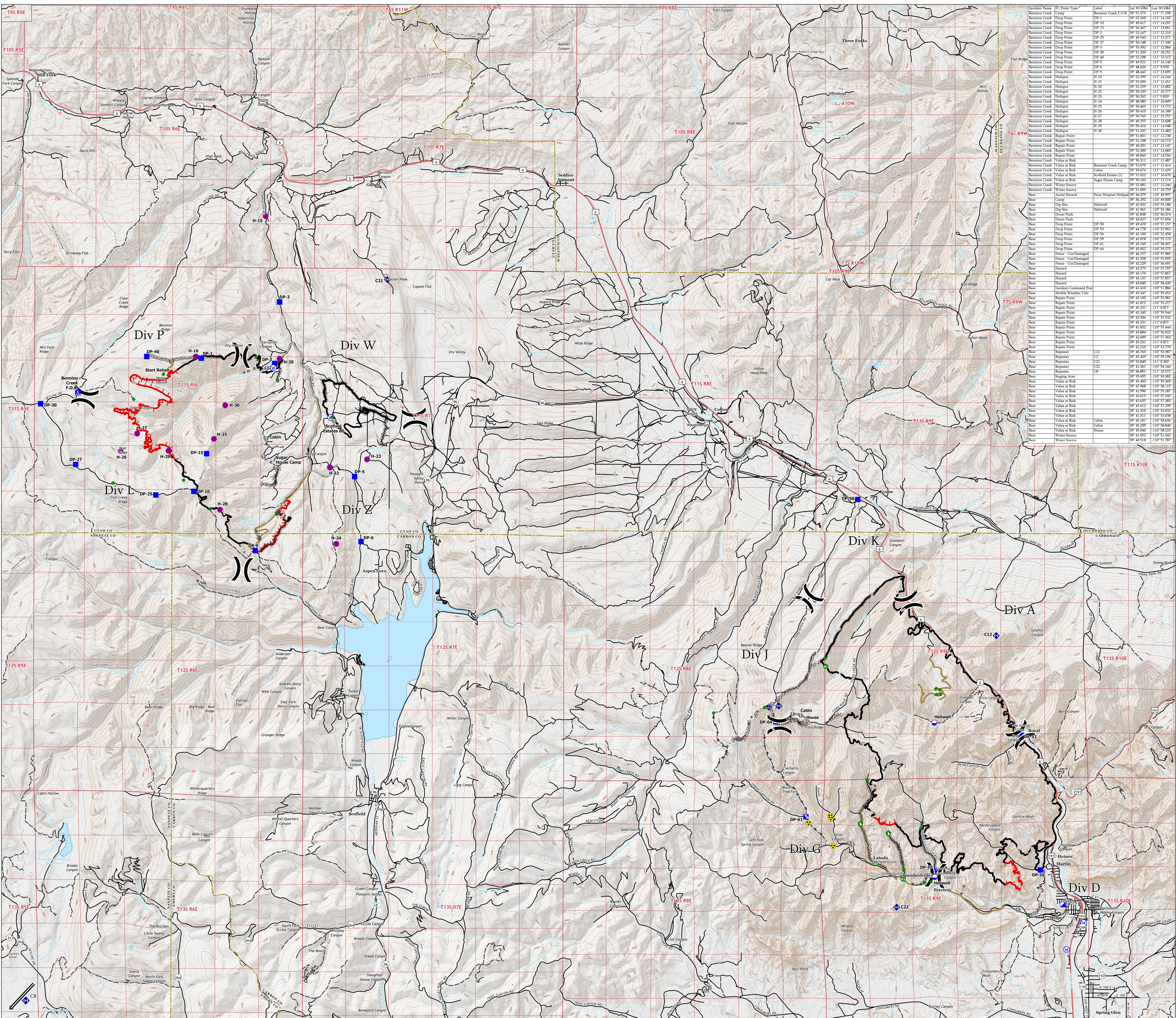
UT-VLD-000127

UT-MLF-000115

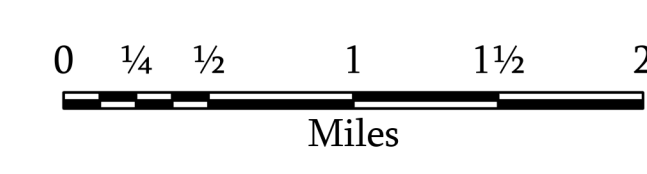
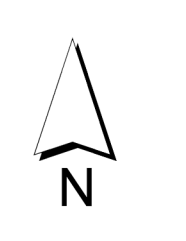
June 21, 2021



- Dip Site
- Heliport
- Division Break
- Incident Command Post
- Drop Point
- Camp
- Value at Risk
- Repair Point
- Fence - Cut/Damaged
- Dozer Push
- Mobile Weather Unit
- Repeater
- Hazard
- Water Source
- Completed Dozer Line
- Completed Hand Line
- Completed Road as Line
- Access or Improved Road
- Repair Line
- Fire Edge
- Contained Line
- Transportation
- Highway
- Road
- 4WD Road
- Trail



Incident Name	PO Point Type	Label	Lat	Lon	WGS84
Bennion Creek	Drop Point	DP-1	39° 52' 20"	111° 14' 10"	
Bennion Creek	Drop Point	DP-10	39° 49' 17"	111° 14' 29"	
Bennion Creek	Drop Point	DP-15	39° 50' 50"	111° 15' 00"	
Bennion Creek	Drop Point	DP-2	39° 52' 10"	111° 12' 10"	
Bennion Creek	Drop Point	DP-25	39° 52' 59"	111° 12' 41"	
Bennion Creek	Drop Point	DP-27	39° 51' 48"	111° 17' 50"	
Bennion Creek	Drop Point	DP-3	39° 53' 92"	111° 12' 08"	
Bennion Creek	Drop Point	DP-30	39° 52' 50"	111° 18' 51"	
Bennion Creek	Drop Point	DP-40	39° 52' 28"	111° 15' 13"	
Bennion Creek	Drop Point	DP-5	39° 49' 21"	111° 10' 10"	
Bennion Creek	Drop Point	DP-6	39° 49' 20"	111° 18' 99"	
Bennion Creek	Drop Point	DP-9	39° 48' 44"	111° 12' 99"	
Bennion Creek	Heliport	H-10	39° 52' 29"	111° 14' 24"	
Bennion Creek	Heliport	H-15	39° 50' 56"	111° 12' 41"	
Bennion Creek	Heliport	H-20	39° 52' 59"	111° 12' 08"	
Bennion Creek	Heliport	H-23	39° 50' 86"	111° 10' 77"	
Bennion Creek	Heliport	H-24	39° 50' 86"	111° 10' 60"	
Bennion Creek	Heliport	H-25	39° 50' 41"	111° 16' 18"	
Bennion Creek	Heliport	H-26	39° 50' 41"	111° 16' 18"	
Bennion Creek	Heliport	H-27	39° 50' 76"	111° 15' 29"	
Bennion Creek	Heliport	H-28	39° 50' 24"	111° 14' 58"	
Bennion Creek	Heliport	H-29	39° 50' 24"	111° 14' 58"	
Bennion Creek	Heliport	H-30	39° 51' 31"	111° 12' 13"	
Bennion Creek	Repair Point	RP-1	39° 51' 83"	111° 12' 13"	
Bennion Creek	Repair Point	RP-108	39° 51' 108"	111° 10' 713"	
Bennion Creek	Repair Point	RP-15	39° 52' 30"	111° 12' 13"	
Bennion Creek	Repair Point	RP-20	39° 52' 30"	111° 12' 13"	
Bennion Creek	Repair Point	RP-25	39° 52' 30"	111° 12' 13"	
Bennion Creek	Repair Point	RP-30	39° 52' 30"	111° 12' 13"	
Bennion Creek	Repair Point	RP-40	39° 52' 30"	111° 12' 13"	
Bennion Creek	Repair Point	RP-5	39° 49' 843"	111° 14' 536"	
Bennion Creek	Value at Risk	Bennion Creek Camp	39° 52' 00"	111° 12' 14"	
Bennion Creek	Value at Risk	Cabin	39° 50' 874"	111° 12' 420"	
Bennion Creek	Value at Risk	Scott's Estates LLC	39° 51' 020"	111° 11' 000"	
Bennion Creek	Value at Risk	Sugar House Camp	39° 50' 103"	111° 12' 174"	
Bennion Creek	Water Source	Water Source	39° 51' 095"	111° 10' 799"	
Bear	Aerial Hazard	Price Hospital Heliport	39° 56' 379"	110° 49' 997"	
Bear	Dip Site	Heliwell	39° 45' 032"	110° 55' 188"	
Bear	Dip Site	Heliwell	39° 41' 861"	110° 55' 186"	
Bear	Dip Site	Heliwell	39° 42' 831"	110° 56' 974"	
Bear	Dip Site	Heliwell	39° 43' 027"	110° 57' 093"	
Bear	Dip Site	Heliwell	39° 42' 508"	110° 57' 817"	
Bear	Dip Site	Heliwell	39° 44' 778"	110° 52' 563"	
Bear	Dip Site	Heliwell	39° 42' 700"	110° 52' 458"	
Bear	Dip Site	Heliwell	39° 42' 008"	110° 53' 718"	
Bear	Dip Site	Heliwell	39° 43' 160"	110° 58' 497"	
Bear	Dip Site	Heliwell	39° 43' 052"	110° 59' 275"	
Bear	Dip Site	Heliwell	39° 41' 210"	110° 51' 866"	
Bear	Dip Site	Heliwell	39° 45' 307"	110° 59' 407"	
Bear	Dip Site	Heliwell	39° 42' 105"	110° 55' 811"	
Bear	Dip Site	Heliwell	39° 41' 877"	110° 55' 277"	
Bear	Dip Site	Heliwell	39° 42' 241"	111° 0' 821"	
Bear	Dip Site	Heliwell	39° 45' 340"	110° 59' 544"	
Bear	Dip Site	Heliwell	39° 42' 700"	110° 55' 827"	
Bear	Dip Site	Heliwell	39° 45' 231"	111° 0' 821"	
Bear	Dip Site	Heliwell	39° 41' 882"	110° 55' 444"	
Bear	Dip Site	Heliwell	39° 42' 884"	110° 56' 407"	
Bear	Dip Site	Heliwell	39° 42' 609"	110° 57' 363"	
Bear	Dip Site	Heliwell	39° 45' 221"	111° 0' 871"	
Bear	Dip Site	Heliwell	39° 41' 210"	110° 52' 707"	
Bear	Dip Site	Heliwell	39° 46' 763"	110° 53' 587"	
Bear	Dip Site	Heliwell	39° 45' 308"	110° 59' 190"	
Bear	Dip Site	Heliwell	39° 53' 840"	111° 9' 307"	
Bear	Dip Site	Heliwell	39° 41' 361"	110° 56' 166"	
Bear	Dip Site	Heliwell	39° 46' 901"	111° 10' 571"	
Bear	Dip Site	Heliwell	39° 45' 695"	110° 50' 382"	
Bear	Dip Site	Heliwell	39° 45' 400"	110° 59' 309"	
Bear	Dip Site	Heliwell	39° 47' 908"	110° 58' 115"	
Bear	Dip Site	Heliwell	39° 41' 996"	110° 55' 287"	
Bear	Dip Site	Heliwell	39° 42' 633"	110° 57' 347"	
Bear	Dip Site	Heliwell	39° 42' 630"	110° 57' 383"	
Bear	Dip Site	Heliwell	39° 42' 612"	110° 57' 299"	
Bear	Dip Site	Heliwell	39° 41' 210"	110° 52' 827"	
Bear	Dip Site	Heliwell	39° 41' 311"	110° 53' 038"	
Bear	Dip Site	Heliwell	39° 45' 181"	110° 58' 634"	
Bear	Dip Site	Heliwell	39° 45' 200"	110° 58' 407"	
Bear	Dip Site	Heliwell	39° 45' 046"	110° 58' 523"	
Bear	Dip Site	Heliwell	39° 41' 052"	110° 51' 342"	
Bear	Dip Site	Heliwell	39° 45' 358"	110° 51' 207"	



1:33,000

Name: NAD 1983 UTM Zone 12N