

Transportation Map

Bear and Bennion Fire

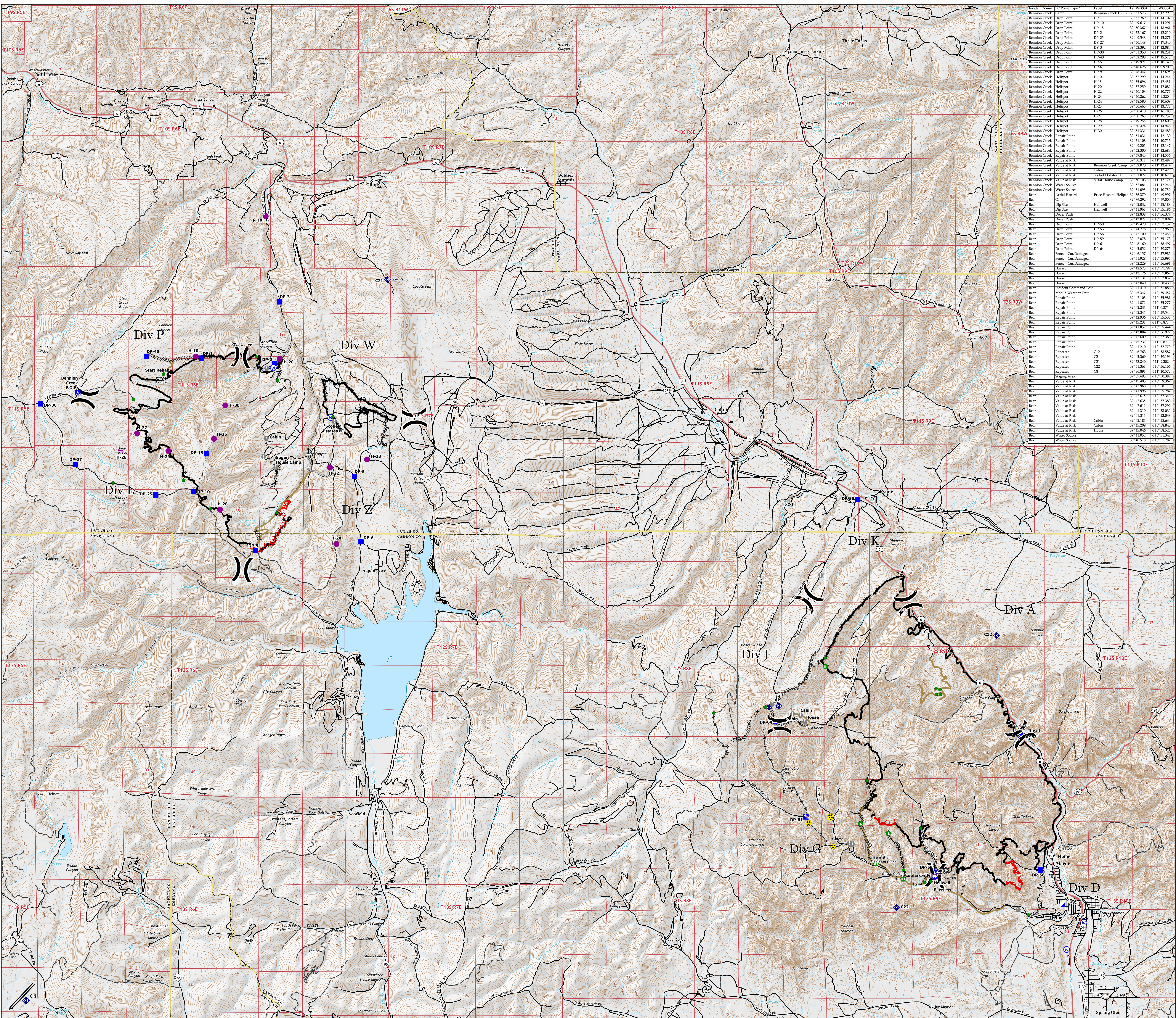
UT-VLD-000127

UT-MLF-000115

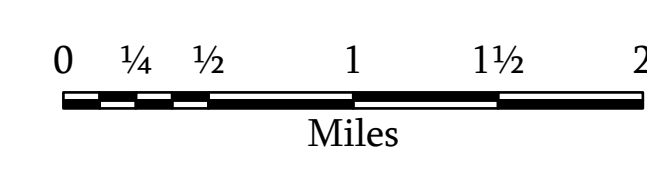
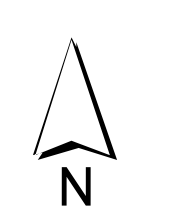
June 22, 2021



- Dip Site
- Helispot
- X Division Break
- Incident Command Post
- Drop Point
- Camp
- Value at Risk
- Repair Point
- Fence - Cut/Damaged
- Dozer Push
- Mobile Weather Unit
- Repeater
- Hazard
- Water Source
- Completed Dozer Line
- Completed Hand Line
- Completed Road as Line
- Access or Improved Road
- Repair Line
- Fire Edge
- Contained Line
- Transportation
- Highway
- Road
- 4WD Road
- Trail



Incident Name	PU Point Type	Label	Lat WGS84	Lon WGS84
Bennion Creek	Drop Point	DP-1	39° 52' 209"	111° 14' 100"
Bennion Creek	Drop Point	DP-10	39° 50' 617"	111° 14' 291"
Bennion Creek	Drop Point	DP-15	39° 52' 209"	111° 14' 100"
Bennion Creek	Drop Point	DP-2	39° 52' 169"	111° 12' 210"
Bennion Creek	Drop Point	DP-25	39° 49' 543"	111° 15' 210"
Bennion Creek	Drop Point	DP-3	39° 53' 992"	111° 12' 084"
Bennion Creek	Drop Point	DP-30	39° 52' 209"	111° 14' 100"
Bennion Creek	Drop Point	DP-40	39° 52' 208"	111° 15' 515"
Bennion Creek	Drop Point	DP-5	39° 49' 921"	111° 10' 110"
Bennion Creek	Drop Point	DP-6	39° 52' 209"	111° 14' 100"
Bennion Creek	Drop Point	DP-9	39° 48' 444"	111° 12' 695"
Bennion Creek	Helispot	H-10	39° 52' 299"	111° 14' 244"
Bennion Creek	Helispot	H-15	39° 50' 506"	111° 12' 611"
Bennion Creek	Helispot	H-20	39° 49' 259"	111° 12' 082"
Bennion Creek	Helispot	H-22	39° 52' 209"	111° 10' 797"
Bennion Creek	Helispot	H-23	39° 50' 302"	111° 9' 820"
Bennion Creek	Helispot	H-24	39° 48' 580"	111° 10' 609"
Bennion Creek	Helispot	H-25	39° 52' 209"	111° 13' 797"
Bennion Creek	Helispot	H-26	39° 50' 410"	111° 16' 180"
Bennion Creek	Helispot	H-27	39° 50' 765"	111° 15' 275"
Bennion Creek	Helispot	H-28	39° 52' 209"	111° 13' 608"
Bennion Creek	Helispot	H-29	39° 50' 424"	111° 14' 948"
Bennion Creek	Helispot	H-30	39° 52' 209"	111° 12' 130"
Bennion Creek	Repair Point	RP-1	39° 51' 831"	111° 12' 130"
Bennion Creek	Repair Point	RP-11	39° 51' 108"	111° 10' 713"
Bennion Creek	Repair Point	RP-12	39° 52' 209"	111° 12' 130"
Bennion Creek	Repair Point	RP-13	39° 52' 209"	111° 12' 683"
Bennion Creek	Repair Point	RP-14	39° 49' 843"	111° 14' 536"
Bennion Creek	Repair Point	RP-15	39° 52' 209"	111° 12' 130"
Bennion Creek	Value at Risk	Bennion Creek Camp	39° 52' 000"	111° 12' 414"
Bennion Creek	Value at Risk	Cabin	39° 50' 674"	111° 12' 425"
Bennion Creek	Value at Risk	Scotts Estates Lc	39° 51' 020"	111° 10' 020"
Bennion Creek	Value at Risk	Sugar House Camp	39° 50' 103"	111° 12' 174"
Bennion Creek	Water Source	Water Source	39° 52' 800"	111° 12' 640"
Bear	Water Source	Water Source	39° 51' 095"	111° 10' 789"
Bear	Aerial Hazard	Price Hospital Helispot	39° 36' 379"	110° 49' 959"
Bear	Dip Site	Helispot	39° 45' 033"	110° 55' 188"
Bear	Dip Site	Helispot	39° 41' 861"	110° 55' 186"
Bear	Dip Site	Helispot	39° 42' 828"	110° 56' 714"
Bear	Dip Site	Helispot	39° 43' 029"	110° 57' 093"
Bear	Dip Site	Helispot	39° 42' 500"	110° 57' 119"
Bear	Dip Site	Helispot	39° 44' 778"	110° 52' 563"
Bear	Dip Site	Helispot	39° 42' 700"	110° 52' 458"
Bear	Dip Site	Helispot	39° 42' 098"	110° 53' 719"
Bear	Dip Site	Helispot	39° 43' 160"	110° 58' 499"
Bear	Dip Site	Helispot	39° 43' 052"	110° 59' 275"
Bear	Dip Site	Helispot	39° 46' 120"	110° 57' 885"
Bear	Dip Site	Helispot	39° 41' 928"	110° 55' 959"
Bear	Dip Site	Helispot	39° 42' 229"	110° 56' 699"
Bear	Dip Site	Helispot	39° 43' 176"	110° 57' 867"
Bear	Dip Site	Helispot	39° 43' 111"	110° 57' 899"
Bear	Dip Site	Helispot	39° 43' 040"	110° 58' 430"
Bear	Dip Site	Helispot	39° 41' 410"	110° 51' 886"
Bear	Dip Site	Helispot	39° 45' 450"	110° 59' 402"
Bear	Dip Site	Helispot	39° 41' 005"	110° 55' 811"
Bear	Dip Site	Helispot	39° 41' 872"	110° 55' 277"
Bear	Dip Site	Helispot	39° 42' 311"	110° 57' 871"
Bear	Dip Site	Helispot	39° 45' 345"	110° 59' 514"
Bear	Dip Site	Helispot	39° 42' 750"	110° 55' 822"
Bear	Dip Site	Helispot	39° 45' 231"	111° 0' 821"
Bear	Dip Site	Helispot	39° 41' 882"	110° 55' 444"
Bear	Dip Site	Helispot	39° 43' 848"	110° 56' 609"
Bear	Dip Site	Helispot	39° 42' 699"	110° 57' 363"
Bear	Dip Site	Helispot	39° 45' 221"	111° 0' 871"
Bear	Dip Site	Helispot	39° 41' 210"	110° 52' 704"
Bear	Dip Site	Helispot	39° 46' 763"	110° 53' 587"
Bear	Dip Site	Helispot	39° 45' 359"	110° 59' 749"
Bear	Dip Site	Helispot	39° 53' 840"	111° 9' 303"
Bear	Dip Site	Helispot	39° 41' 361"	110° 56' 166"
Bear	Dip Site	Helispot	39° 46' 960"	111° 10' 515"
Bear	Dip Site	Helispot	39° 55' 695"	110° 50' 382"
Bear	Dip Site	Helispot	39° 45' 403"	110° 59' 369"
Bear	Dip Site	Helispot	39° 47' 908"	110° 58' 115"
Bear	Dip Site	Helispot	39° 41' 996"	110° 55' 289"
Bear	Dip Site	Helispot	39° 42' 671"	110° 57' 419"
Bear	Dip Site	Helispot	39° 42' 630"	110° 57' 383"
Bear	Dip Site	Helispot	39° 42' 612"	110° 57' 299"
Bear	Dip Site	Helispot	39° 41' 210"	110° 53' 021"
Bear	Dip Site	Helispot	39° 41' 311"	110° 53' 038"
Bear	Dip Site	Helispot	39° 45' 181"	110° 58' 634"
Bear	Dip Site	Helispot	39° 45' 206"	110° 58' 608"
Bear	Dip Site	Helispot	39° 45' 486"	110° 58' 513"
Bear	Dip Site	Helispot	39° 41' 052"	110° 51' 342"
Bear	Dip Site	Helispot	39° 46' 358"	110° 51' 287"



1:33,000

Name: NAD 1983 UTM Zone 12N