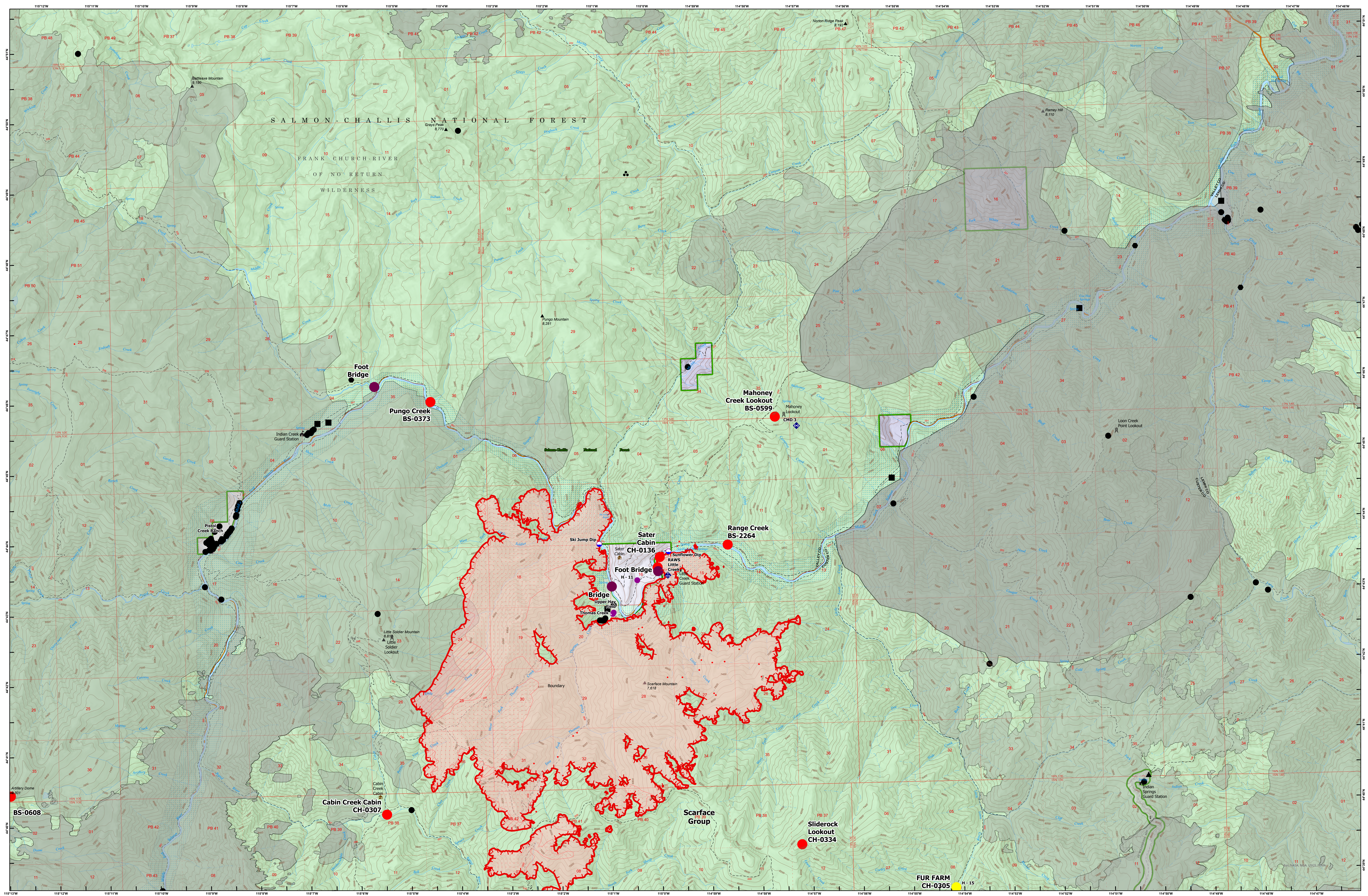
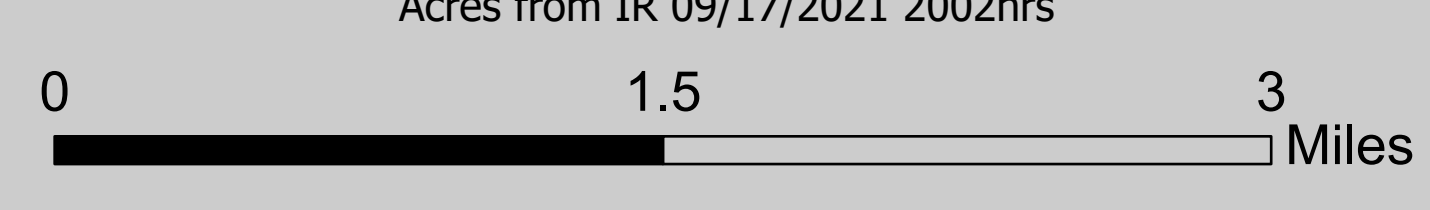


VALUES AT RISK BOUNDARY - SCARFACE GROUP ID-SCF-021230 9/20/2021



73,620 est. acres
Acres from IR 09/17/2021 2002hrs



- | | | | | |
|---------------------|-------------------------|------------------------------------------------------|-------------------------------|------------------|
| Dip Site | Repeater | Fire History | Wildfire Daily Fire Perimeter | Dirt Roads |
| Heliport | IR Isolated Heat Source | Boise National Forest Administered by Salmon-Challis | Highway | Unimproved Roads |
| Sling Site | Possible IR Heat Source | Proclaimed FS Boundary | Non-paved road | Closed Roads |
| Mobile Weather Unit | IR Intense Heat | Administrative FS Boundary | Paved Road | Trail |
| | IR Scattered Heat | Federal Wilderness Boundary | Gravel Road | |
-
- | | | | | |
|----------------|----------------|----------------|---------------|---------------|
| Transportation | Infrastructure | Safety Hazards | Defended | Value at Risk |
| Communication | Other | Structures | Needs Prepped | Value Burned |
| Cultural | Range | Mine | Prepped | |
| Facilities | Recreation | | | |



Operations
9/19/2021 9:53 PM PST