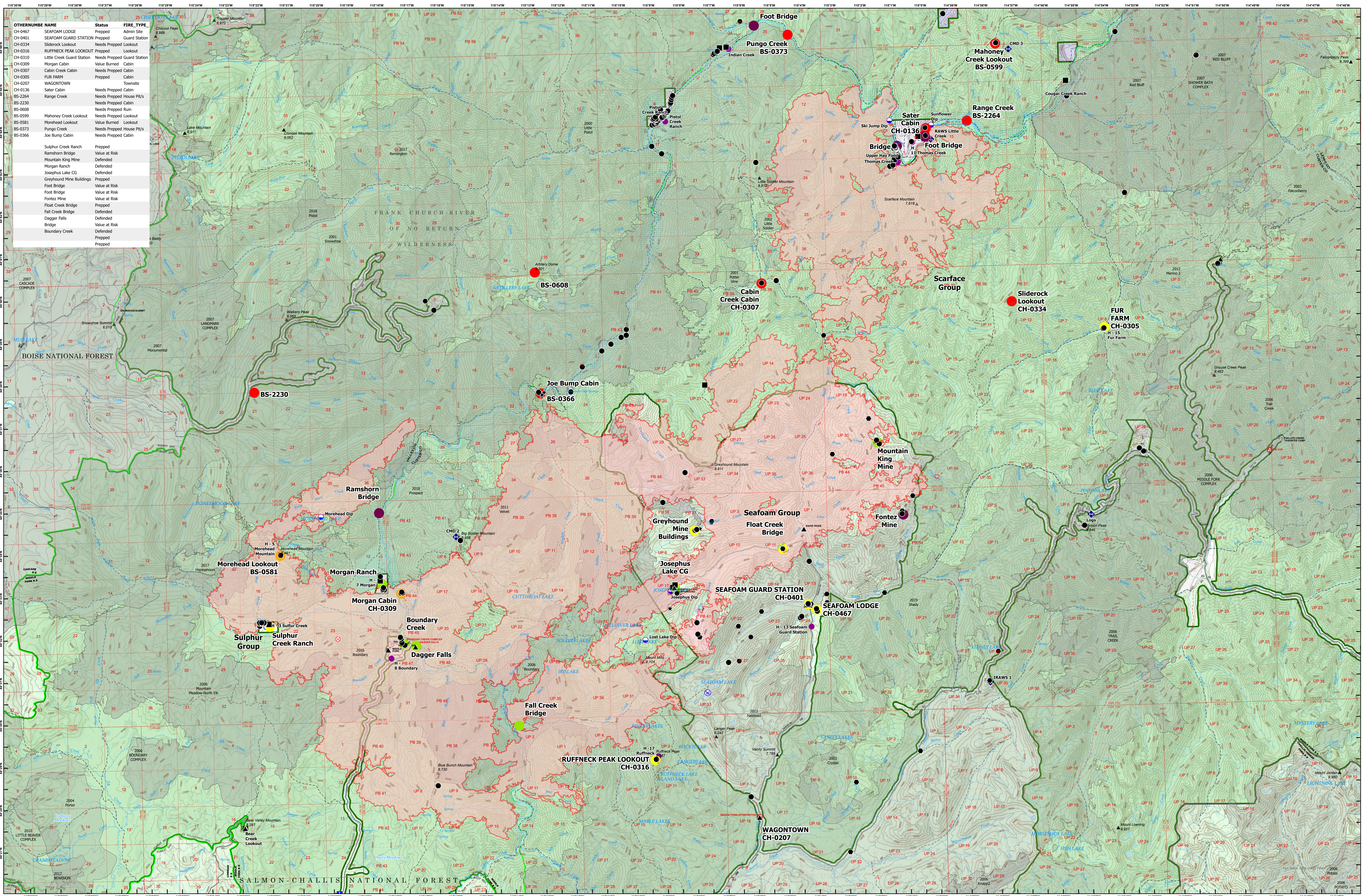


# VALUES AT RISK

# BOUNDARY

# ID-SCF-021230

9/24/2021



OTHERNUMBER	NAME	Status	FIRE_TYPE
CH-0467	SEAFOAM LODGE	Prepped	Admin Site
CH-0401	SEAFOAM GUARD STATION	Prepped	Guard Station
CH-0234	Sliderock Lookout	Needs Prepped	Lookout
CH-0316	RUFFNECK PEAK LOOKOUT	Prepped	Lookout
CH-0310	Little Creek Guard Station	Needs Prepped	Guard Station
CH-0309	Morgan Cabin	Value Burned	Cabin
CH-0307	Cabin Creek Cabin	Needs Prepped	Cabin
CH-0305	FUR FARM	Prepped	Cabin
CH-0207	WAGONTOWN	Prepped	Townsite
CH-0136	Sater Cabin	Needs Prepped	Cabin
BS-2264	Range Creek	Needs Prepped	House P/U's
BS-2230		Needs Prepped	Cabin
BS-0608		Needs Prepped	Ruin
BS-0599	Mahoney Creek Lookout	Needs Prepped	Lookout
BS-0581	Morehead Lookout	Value Burned	Lookout
BS-0373	Pungo Creek	Needs Prepped	House P/U's
BS-0366	Joe Bump Cabin	Needs Prepped	Cabin
	Sulphur Creek Ranch	Prepped	Value at Risk
	Ramshorn Bridge	Defended	
	Mountain King Mine	Defended	
	Morgan Ranch	Defended	
	Josephus Lake CG	Defended	
	Greyhound Mine Buildings	Prepped	Value at Risk
	Foot Bridge	Value at Risk	
	Fontez Mine	Value at Risk	
	Float Creek Bridge	Prepped	
	Fall Creek Bridge	Defended	
	Dagger Falls	Defended	Value at Risk
	Boundary Creek	Prepped	
		Prepped	

**80,053 est. acres**  
Acres from IR 09/23/2021 1949hrs

0 1 2 4 Miles

	Dip Site		Lookout		Restricted Water Source		Infrastructure		Structures
	Helispot		Fire Origin		Communication		Range		Other
	Sling Site		Mobile Weather Unit		Cultural		Recreation		Transportation
	Camp		Repeater		Facilities		Safety Hazards		Defended

	Needs Prepped		Defensible, Prep and Hold		Other Public Roads
	Prepped		Defensible, Stand Alone		Fire History
	Value at Risk		Non-Defensible, Prep and Leave		Defend
	Value Burned		Non-Defensible, Rescue, Drive By		Evaluate
					Wildfire Daily Fire Perimeter

9/24/2021 5:39 AM HRS