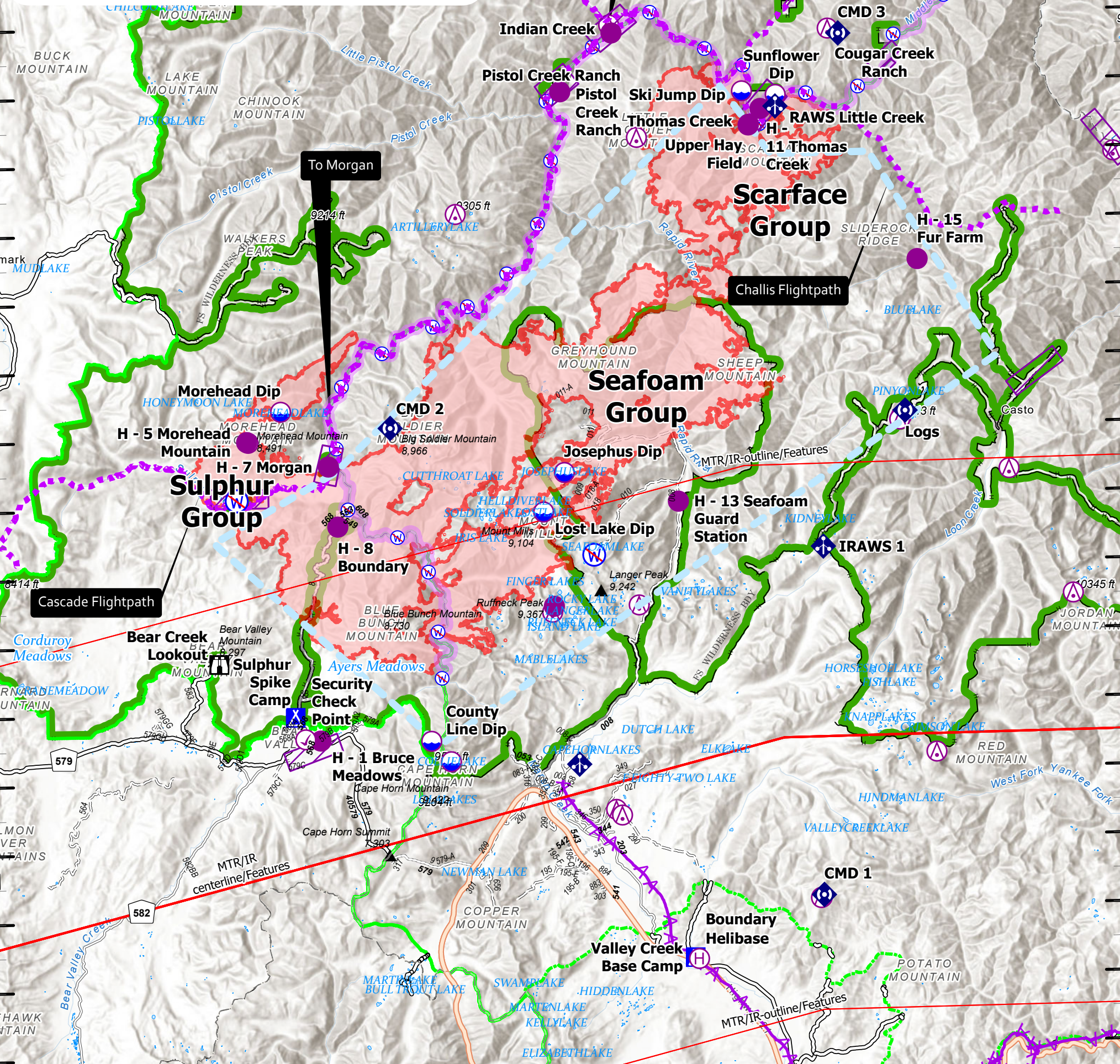


115°30'W 115°28'W 115°26'W 115°24'W 115°22'W 115°20'W 115°18'W 115°16'W 115°14'W 115°12'W 115°10'W 115°8'W 115°6'W 115°4'W 115°2'W 115°0'W 114°58'W 114°56'W 114°54'W 114°52'W 114°50'W 114°48'W 114°46'W

FC Point Type	Label	Latitude WGS84 DDM	Longitude WGS84 DDM
Camp	Sulphur Spike Camp	44° 25.955' N	115° 19.840' W
Camp	Valley Creek Base Camp	44° 18.666' N	115° 03.816' W
Check Point	Security Check Point	44° 25.241' N	115° 19.437' W
Dip Site	Collie Lake	44° 24.515' N	115° 13.544' W
Dip Site	County Line Dip	44° 25.121' N	115° 14.327' W
Dip Site	Josephus Dip	44° 32.860' N	115° 08.694' W
Dip Site	Lost Lake Dip	44° 31.723' N	115° 09.572' W
Dip Site	Morehead Dip	44° 34.790' N	115° 20.192' W
Dip Site	Ski Jump Dip	44° 43.845' N	115° 01.113' W
Dip Site	Sunflower Dip	44° 43.717' N	114° 59.737' W
Helibase	Boundary Helibase	44° 18.624' N	115° 03.663' W
Helispot	H - 1 Bruce Meadows	44° 25.195' N	115° 18.822' W
Helispot	H - 11 Thomas Creek	44° 43.320' N	115° 00.372' W
Helispot	H - 13 Seafoam Guard Station	44° 31.948' N	115° 04.081' W
Helispot	H - 15 Fur Farm	44° 38.837' N	114° 54.119' W
Helispot	H - 3 Sulfur Creek	44° 32.220' N	115° 22.041' W
Helispot	H - 5 Morehead Mountain	44° 33.927' N	115° 21.599' W
Helispot	H - 7 Morgan	44° 33.168' N	115° 18.294' W
Helispot	H - 8 Boundary	44° 31.413' N	115° 17.959' W
Helispot	H - 17 Ruffneck	44° 28.973' N	115° 09.224' W
Helispot	Indian Creek	44° 45.620' N	115° 06.382' W
Helispot	Pistol Creek Ranch	44° 43.942' N	115° 08.529' W
Helispot	Upper Hay Field	44° 42.868' N	115° 00.858' W
Lookout	Bear Creek Lookout	44° 27.469' N	115° 22.887' W
Mobile Weather Unit	IRAWS 1	44° 30.540' N	114° 58.230' W
Mobile Weather Unit	IRAWS 60	44° 24.360' N	115° 08.340' W
Mobile Weather Unit	RAWS Little Creek	44° 43.380' N	114° 59.760' W
Repeater	CMD 1	44° 20.400' N	114° 58.536' W
Repeater	CMD 2	44° 34.252' N	115° 15.745' W
Repeater	CMD 3	44° 45.461' N	114° 57.122' W
Repeater	Logs	44° 34.437' N	114° 54.767' W
Restricted Water Source		44° 32.222' N	115° 22.051' W
Restricted Water Source		44° 30.445' N	115° 07.556' W
Restricted Water Source		44° 32.222' N	115° 22.051' W
Sling Site	Thomas Creek	44° 42.848' N	115° 00.875' W



80,053 est. acres
Acres from IR 09/23/2021 1949hrs
3 Miles

Check Point	Helibase	Lookout	Restricted Water Source	Aerial Hazard	Wildfire Daily Fire Perimeter
Dip Site	Sling Site	Mobile Weather Unit	Connector Routes	Temporary Flight Restriction	Federal Wilderness Boundary
Helispot	Camp	Repeater	Aerial Hazard	Flight Paths	Proclaimed FS Boundary
					Administrative FS Boundary

9/22/2021