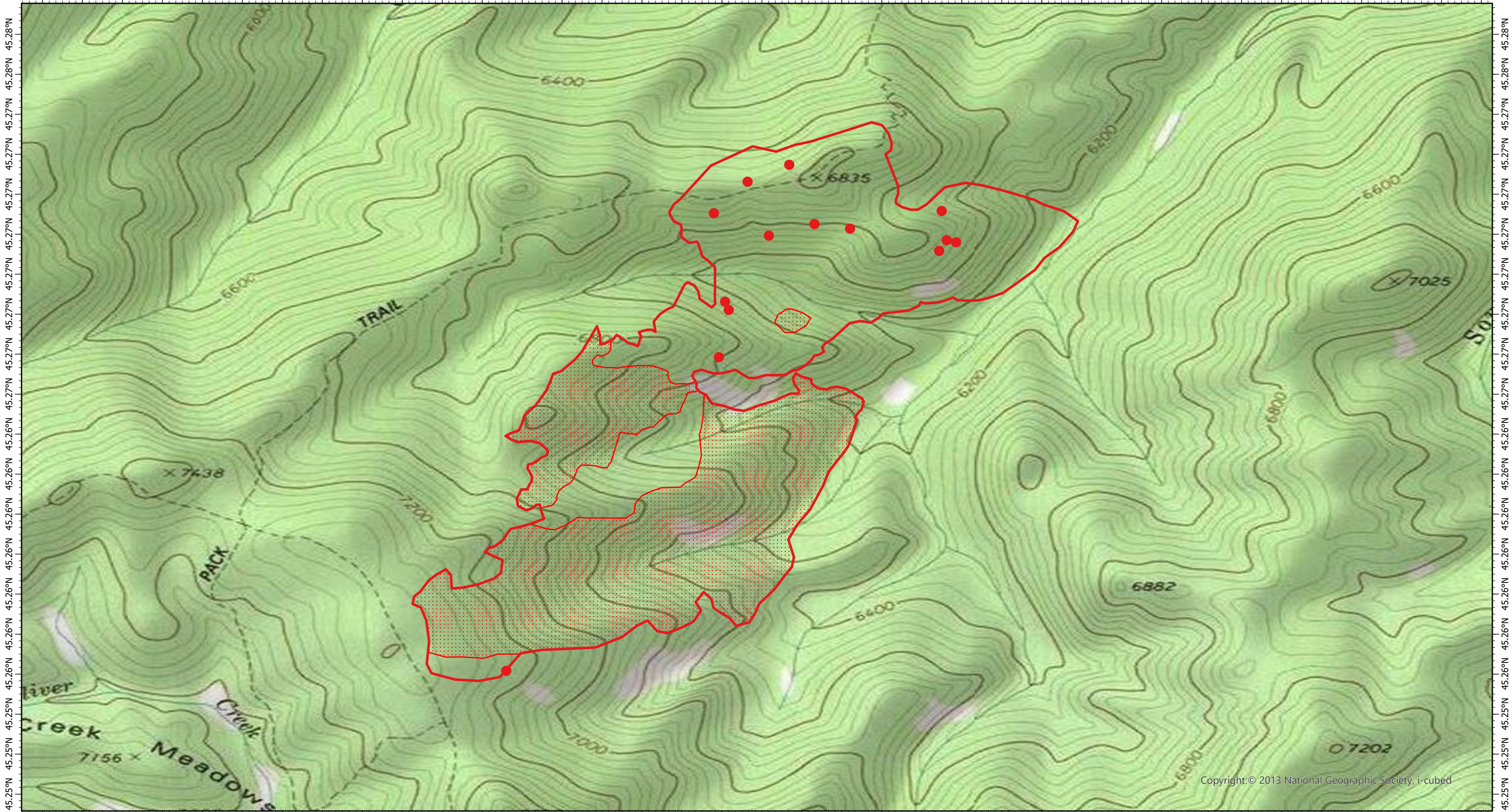


115.08°W 115.08°W 115.08°W 115.08°W 115.08°W 115.08°W 115.08°W 115.07°W 115.07°W 115.07°W 115.07°W 115.07°W 115.07°W 115.06°W 115.06°W 115.06°W 115.06°W 115.06°W 115.06°W 115.05°W 115.05°W 115.05°W 115.05°W 115.05°W 115.05°W 115.05°W 115.04°W 115.04°W 115.04°W 115.04°W 115.04°W 115.04°W 115.04°W 115.03°W 115.03°W



Copyright: © 2013 National Geographic Society, i-cubed

115.08°W 115.08°W 115.08°W 115.08°W 115.08°W 115.08°W 115.08°W 115.07°W 115.07°W 115.07°W 115.07°W 115.07°W 115.07°W 115.06°W 115.06°W 115.06°W 115.06°W 115.06°W 115.06°W 115.05°W 115.05°W 115.05°W 115.05°W 115.05°W 115.05°W 115.05°W 115.04°W 115.04°W 115.04°W 115.04°W 115.04°W 115.04°W 115.04°W 115.03°W 115.03°W

# Club Fire IR Map ID-PAF-000427

2 August 2021, 2211 MDT  
375 Interpreted Acres

Scale: 1:14,000  
Projection: WGS 1984  
Produced by: Owyhee Air Research, LLC  
IR Interpreter: S. Osberg  
Contact: fire@owyheeair.com (208) 442-5405

**Legend**

- Isolated Heat
- Burn Perimeter
- Scattered Heat

