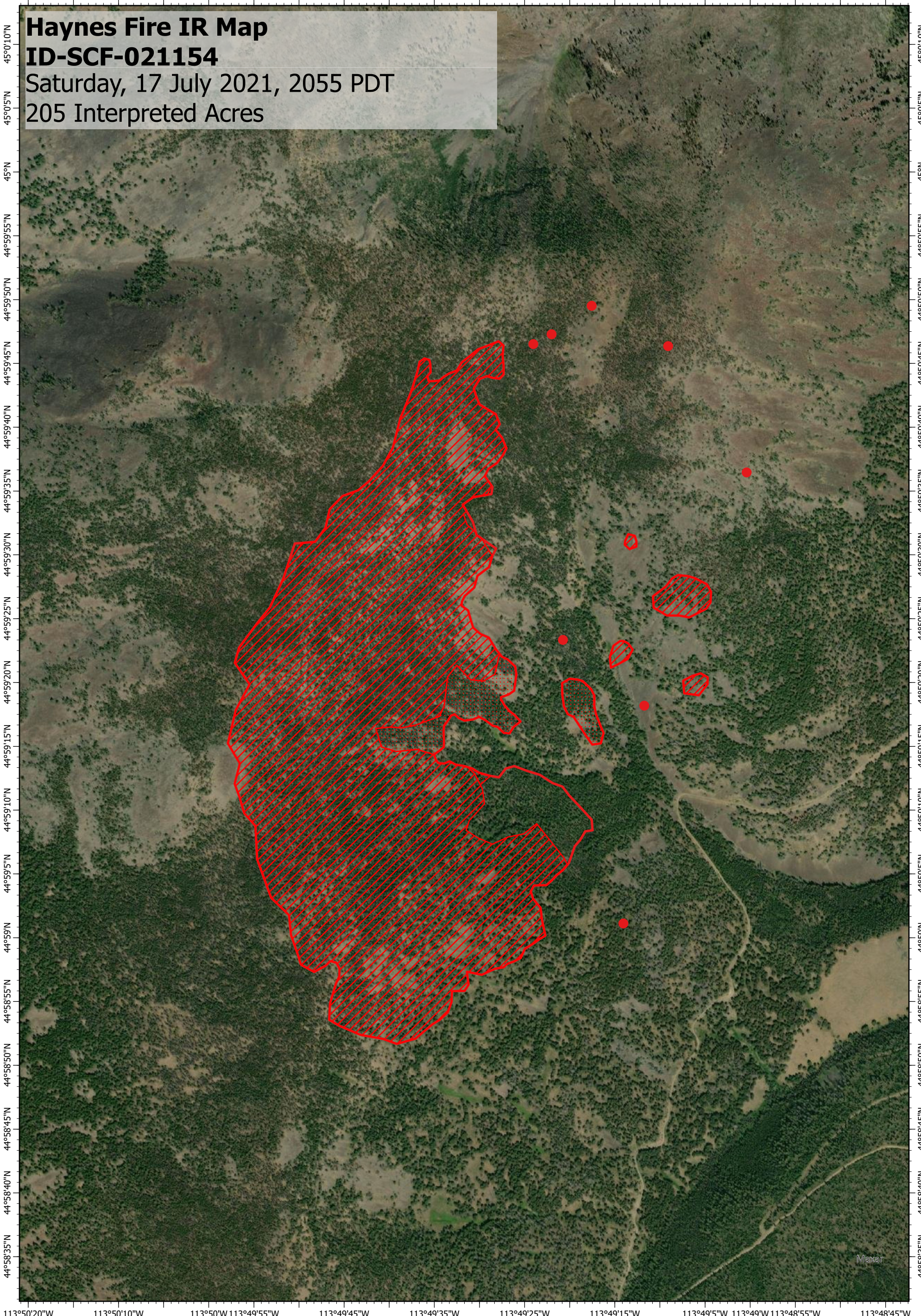


113°50'20"W 113°50'10"W 113°50'W 113°49'55"W 113°49'45"W 113°49'35"W 113°49'25"W 113°49'15"W 113°49'5"W 113°49'W 113°48'55"W 113°48'45"W



Haynes Fire IR Map

ID-SCF-021154

Saturday, 17 July 2021, 2055 PDT

205 Interpreted Acres

113°50'20"W 113°50'10"W 113°50'W 113°49'55"W 113°49'45"W 113°49'35"W 113°49'25"W 113°49'15"W 113°49'5"W 113°49'W 113°48'55"W 113°48'45"W

Legend

- Isolated Heat
- Scattered Heat
- Intense Heat
- Burn Perimeter

Scale: 1:12,000

Projection: WGS 1984

Produced by: Owyhee Air Research, LLC

IR Interpreter: S. Osberg

Contact: fire@owyheear.com (208) 442-5405

