

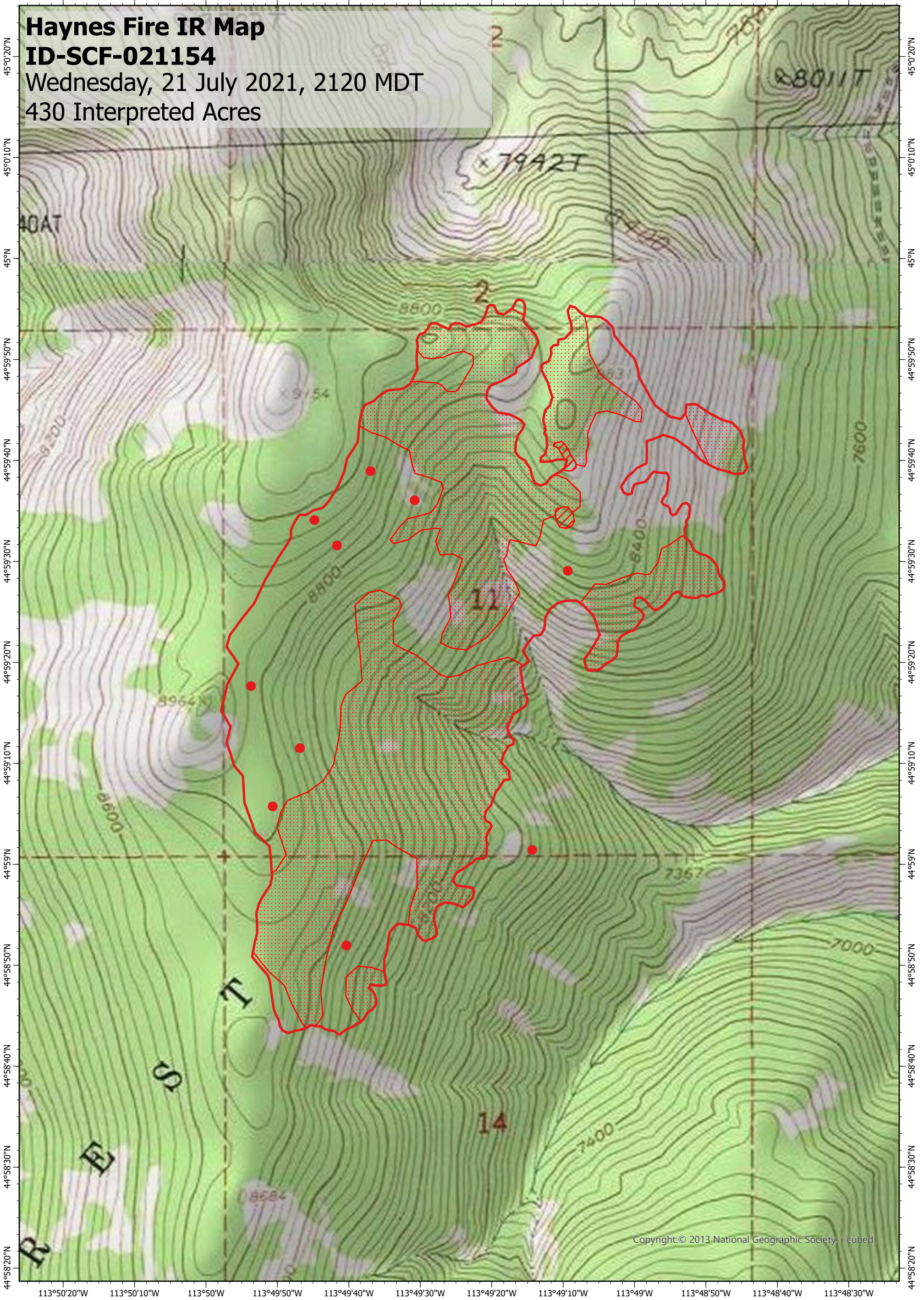
113°50'20"W 113°50'10"W 113°50'W 113°49'50"W 113°49'40"W 113°49'30"W 113°49'20"W 113°49'10"W 113°49'W 113°48'50"W 113°48'40"W 113°48'30"W

Haynes Fire IR Map

ID-SCF-021154

Wednesday, 21 July 2021, 2120 MDT

430 Interpreted Acres



Copyright: © 2013 National Geographic Society, I-cubed

Legend

- Isolated Heat
- Burn Perimeter
- Intense Heat
- Scattered Heat

Scale: 1:15,000

Projection: WGS 1984

Produced by: Owyhee Air Research, LLC

IR Interpreter: S. Osberg

Contact: fire@owyheeair.com (208) 442-5405

