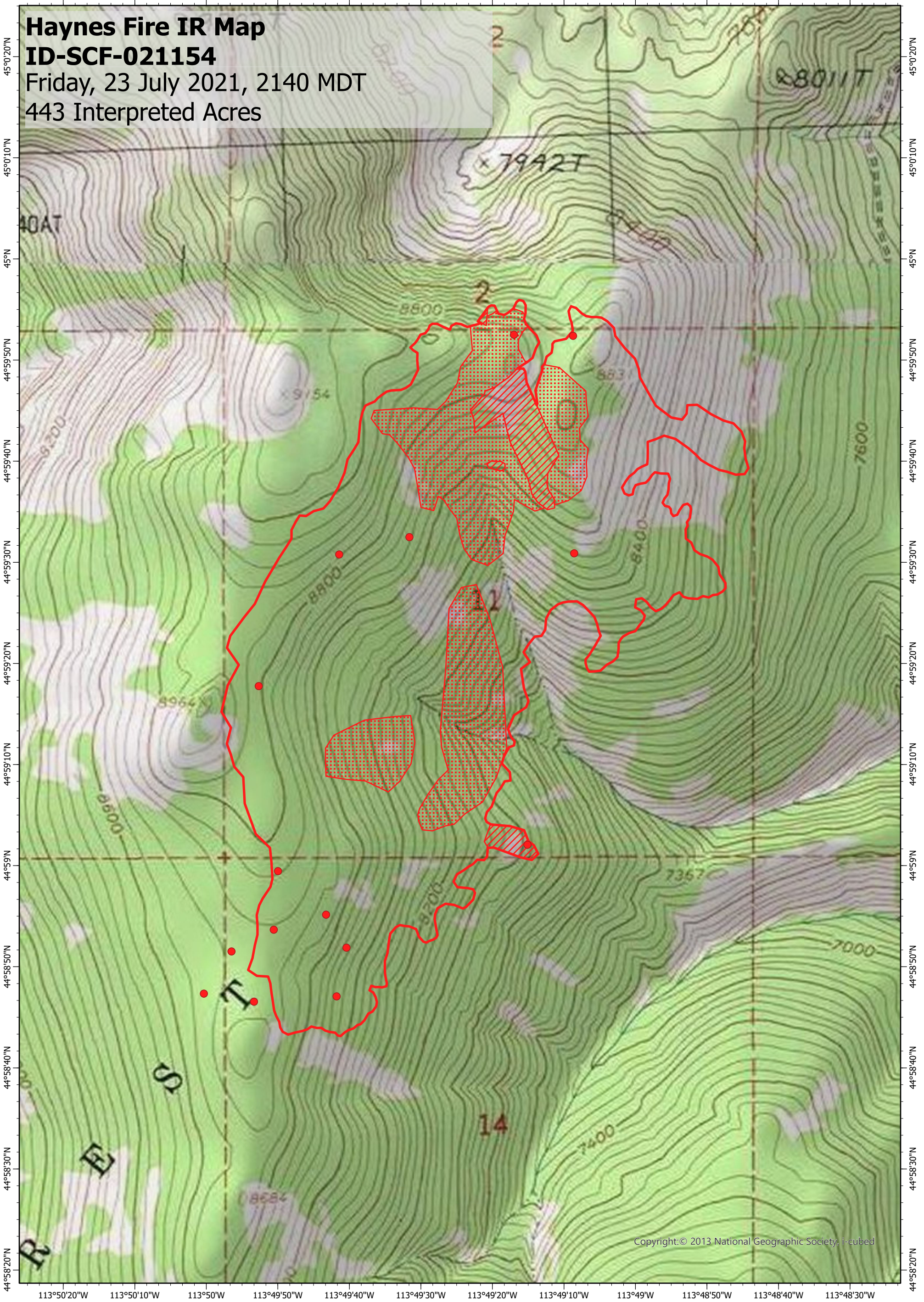


113°50'20"W 113°50'10"W 113°50'W 113°49'50"W 113°49'40"W 113°49'30"W 113°49'20"W 113°49'10"W 113°49'W 113°48'50"W 113°48'40"W 113°48'30"W

Haynes Fire IR Map
ID-SCF-021154
Friday, 23 July 2021, 2140 MDT
443 Interpreted Acres



Legend

- Isolated Heat
- Burn Perimeter
- Intense Heat
- Scattered Clip

Scale: 1:15,000
 Projection: WGS 1984
 Produced by: Owyhee Air Research, LLC
 IR Interpreter: C. Holley
 Contact: fire@owyheeair.com (208) 442-5405

