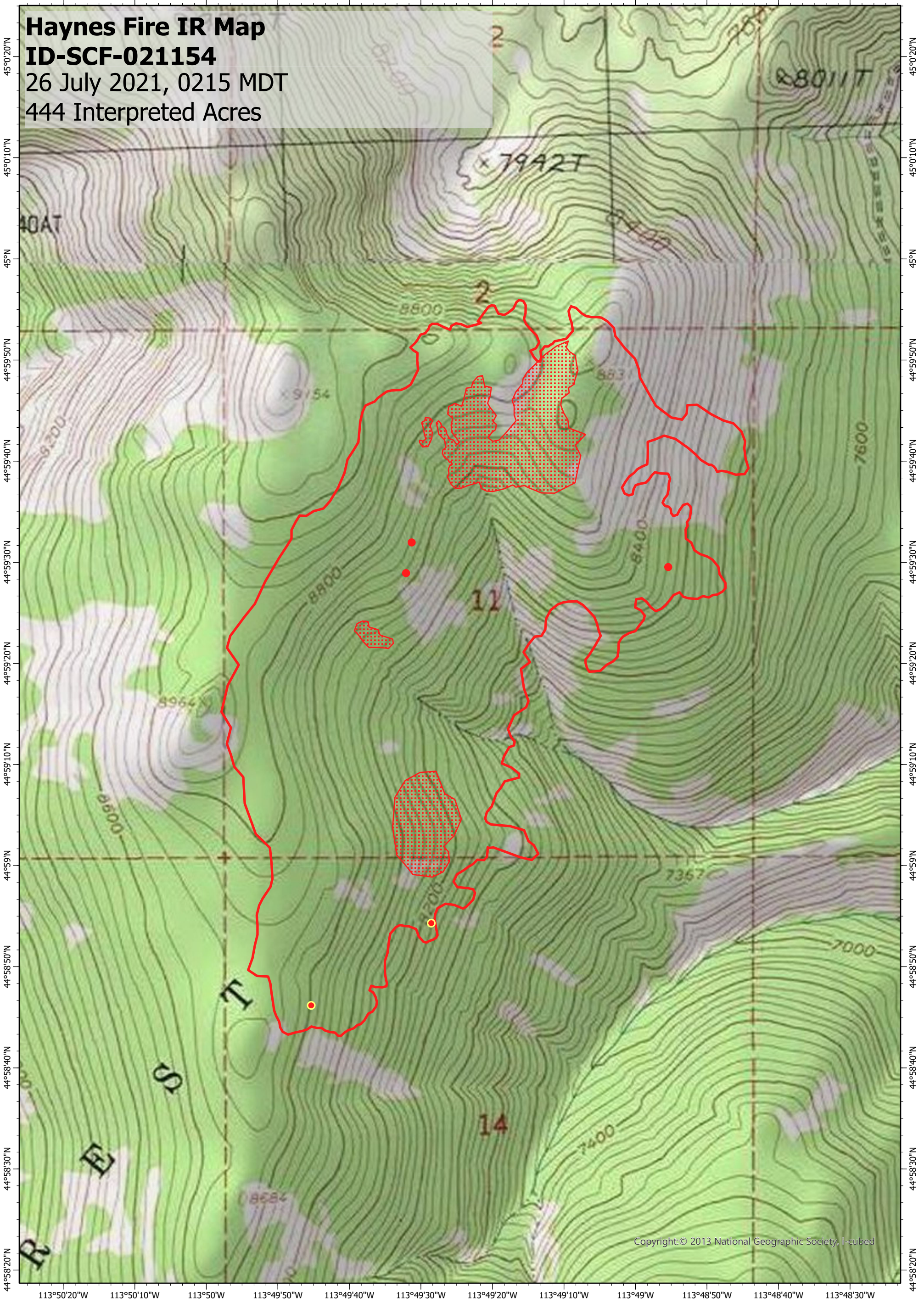


113°50'20"W 113°50'10"W 113°50'W 113°49'50"W 113°49'40"W 113°49'30"W 113°49'20"W 113°49'10"W 113°49'W 113°48'50"W 113°48'40"W 113°48'30"W

**Haynes Fire IR Map**  
**ID-SCF-021154**  
26 July 2021, 0215 MDT  
444 Interpreted Acres



Copyright:© 2013 National Geographic Society, I-cubed

**Legend**

- Isolated Heat
- Priority Hotspots
- Burn Perimeter
- Scattered Heat

Scale: 1:15,000  
 Projection: WGS 1984  
 Produced by: Owyhee Air Research, LLC  
 IR Interpreter: K. Hanks  
 Contact: [fire@owyheeair.com](mailto:fire@owyheeair.com) (208) 442-5405

