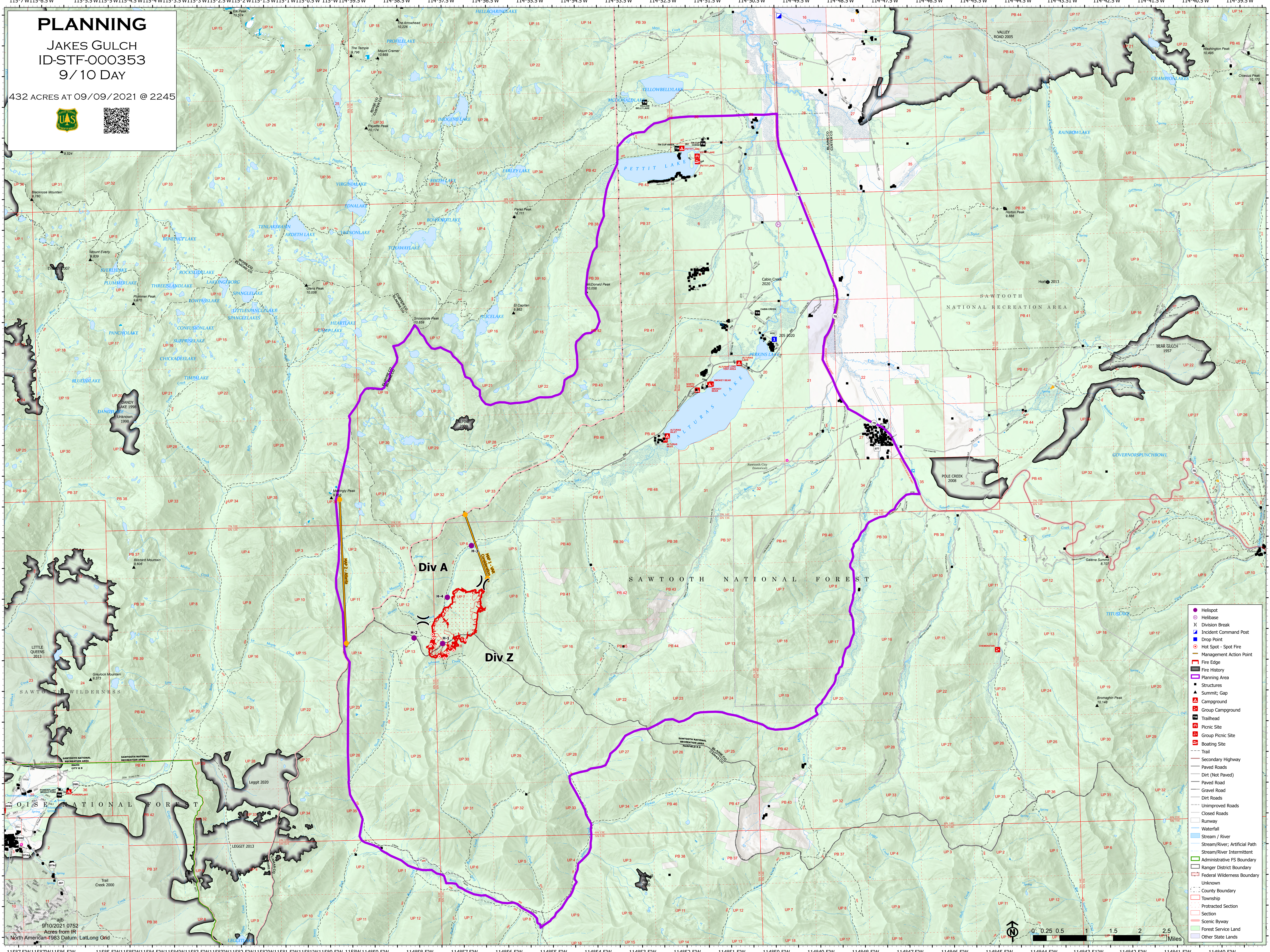


PLANNING

JAKES GULCH
ID-STF-000353
9/10 DAY

432 ACRES AT 09/09/2021 @ 2245



- Helispot
- ⊙ Helibase
- ⊗ Division Break
- Ⓜ Incident Command Post
- Ⓛ Drop Point
- Ⓢ Hot Spot - Spot Fire
- Ⓜ Management Action Point
- Ⓜ Fire Edge
- Ⓜ Fire History
- Ⓜ Planning Area
- ▲ Summit, Gap
- Ⓜ Campground
- Ⓜ Group Campground
- Ⓜ Trailhead
- Ⓜ Picnic Site
- Ⓜ Group Picnic Site
- Ⓜ Boating Site
- Ⓜ Trail
- Ⓜ Secondary Highway
- Ⓜ Paved Roads
- Ⓜ Dirt (Not Paved)
- Ⓜ Paved Road
- Ⓜ Gravel Road
- Ⓜ Dirt Roads
- Ⓜ Unimproved Roads
- Ⓜ Closed Roads
- Ⓜ Runway
- Ⓜ Waterfall
- Ⓜ Stream / River
- Ⓜ Stream/River; Artificial Path
- Ⓜ Stream/River Intermittent
- Ⓜ Administrative FS Boundary
- Ⓜ Ranger District Boundary
- Ⓜ Federal Wilderness Boundary
- Ⓜ Unknown
- Ⓜ County Boundary
- Ⓜ Township
- Ⓜ Section
- Ⓜ Protracted Section
- Ⓜ Scenic Byway
- Ⓜ Forest Service Land
- Ⓜ Other State Lands

9/10/2021 0752
Acres from IR
North American 1983 Datum, LatLong Grid

