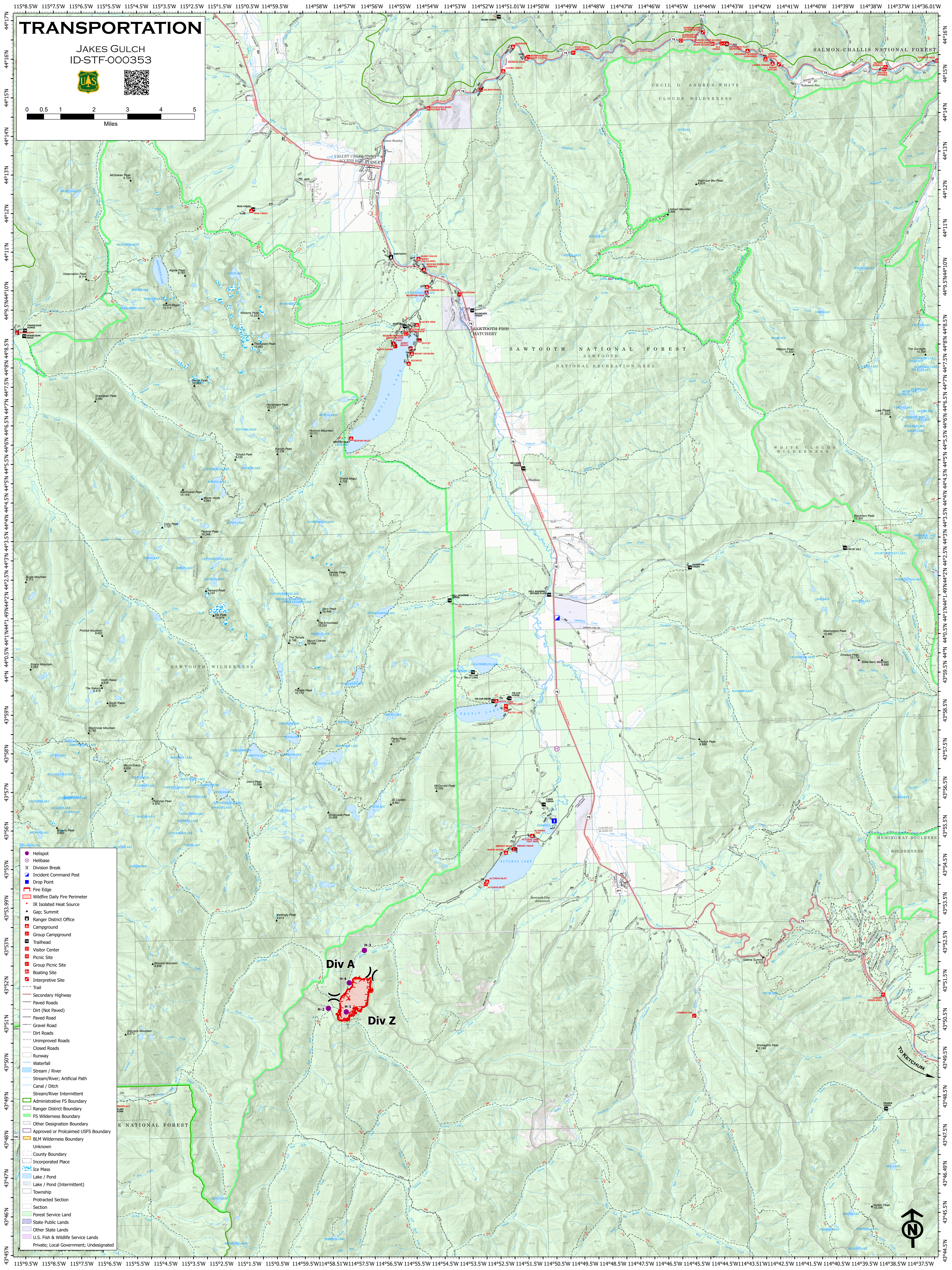
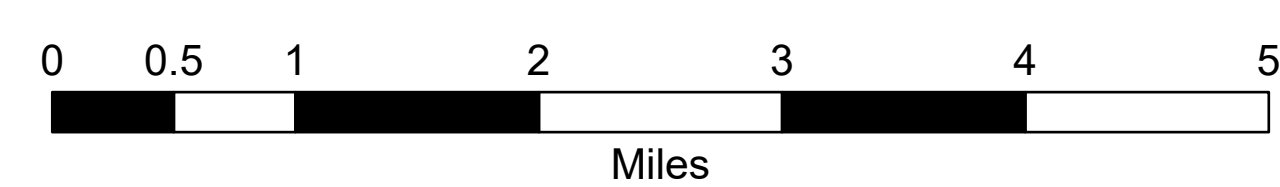


TRANSPORTATION

JAKES GULCH
ID-STF-000353



- Heliport
- Helibase
- ⌵ Division Break
- ⌵ Incident Command Post
- ⌵ Drop Point
- Fire Edge
- Wildfire Daily Fire Perimeter
- IR Isolated Heat Source
- ▲ Gap; Summit
- ⌵ Ranger District Office
- ⌵ Campground
- ⌵ Group Campground
- ⌵ Trailhead
- ⌵ Visitor Center
- ⌵ Picnic Site
- ⌵ Group Picnic Site
- ⌵ Boating Site
- ⌵ Interpretive Site
- Trail
- Secondary Highway
- Paved Roads
- Dirt (Not Paved)
- Paved Road
- Gravel Road
- Dirt Roads
- Unimproved Roads
- Closed Roads
- Runway
- Waterfall
- Stream / River
- Stream/River; Artificial Path
- Canal / Ditch
- Stream/River Intermittent
- Administrative FS Boundary
- Ranger District Boundary
- FS Wilderness Boundary
- Other Designation Boundary
- Approved or Proclaimed USFS Boundary
- BLM Wilderness Boundary
- Unknown
- County Boundary
- Incorporated Place
- Ice Mass
- Lake / Pond
- Lake / Pond (Intermittent)
- Township
- Protracted Section
- Section
- Forest Service Land
- State Public Lands
- Other State Lands
- U.S. Fish & Wildlife Service Lands
- Private; Local Government; Undesignated

Div A
Div Z

