



115°4.5'W 115°4'W 115°3.5'W 115°3'W 115°2.5'W 115°2'W 115°1.5'W 115°1'W 115°0.5'W 115°W 114°59.5'W 114°59'W 114°58.5'W 114°58'W 114°57.5'W 114°57'W 114°56.5'W 114°56'W 114°55.5'W 114°55'W 114°54.5'W 114°54'W 114°53.5'W 114°53'W 114°52.5'W 114°52'W 114°51.5'W 114°51'W 114°50.5'W 114°50'W 114°49.5'W 114°49'W 114°48.5'W 114°48'W 114°47.5'W 114°47'W 114°46.5'W 114°46'W 114°45.5'W 114°45'W 114°44.5'W 114°44'W 114°43.5'W

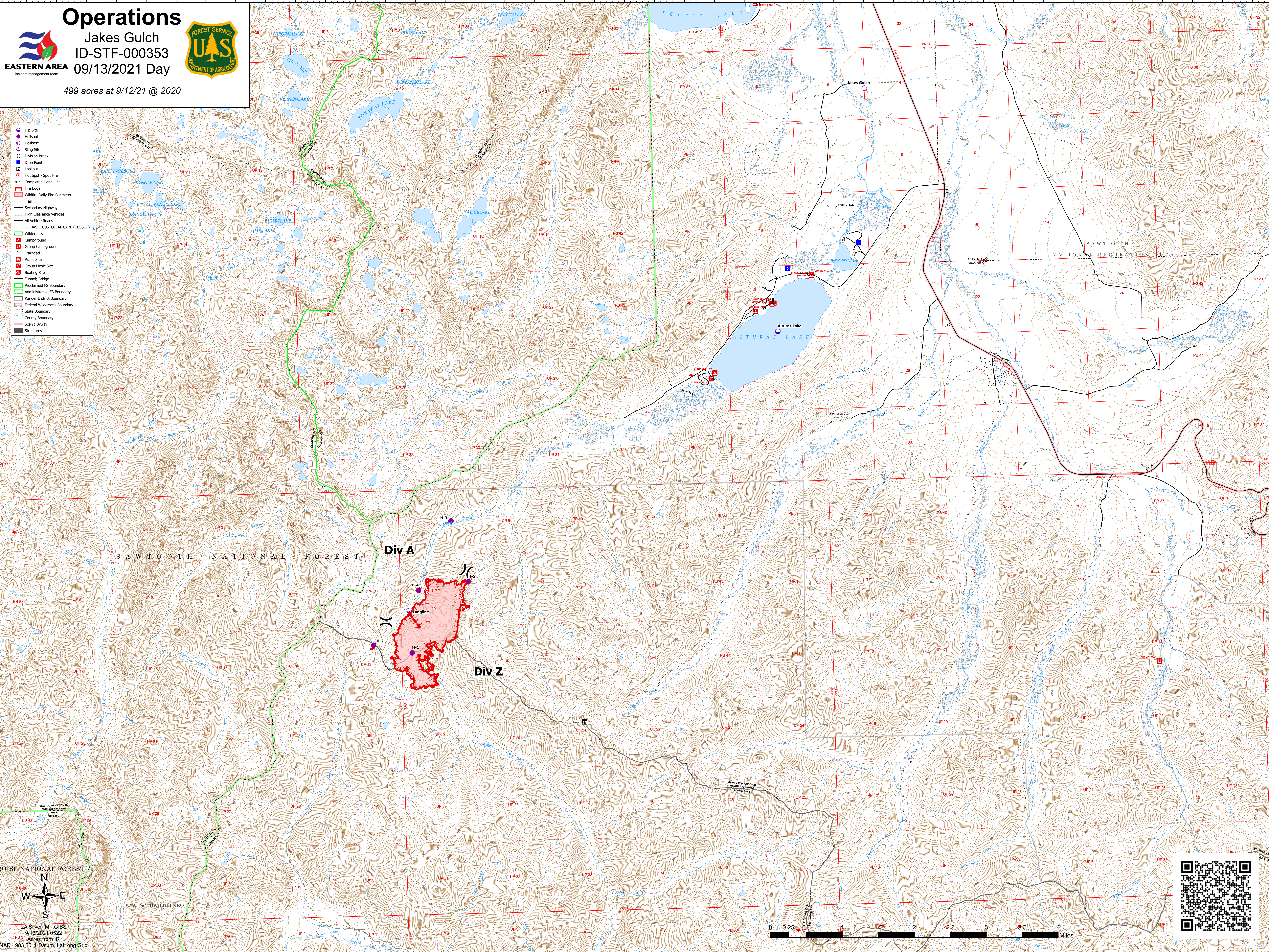

Operations

Jakes Gulch
ID-STF-000353
09/13/2021 Day

499 acres at 9/12/21 @ 2020

- Dip Site
- Helispot
- Sling Site
- Division Break
- Drop Point
- Lookout
- Hot Spot - Spot Fire
- Completed Hand Line
- Fire Edge
- Wildfire Daily Fire Perimeter
- Trail
- Secondary Highway
- High Clearance Vehicles
- All Vehicle Roads
- 1-BASIC CUSTODIAL CARE (CLOSED)
- Wilderness
- Campground
- Group Picn Campground
- Trailhead
- Picnic Site
- Group Picnic Site
- Boating Site
- Turned Bridge
- Proclaimed FS Boundary
- Administrative FS Boundary
- Ranger District Boundary
- Federal Wilderness Boundary
- State Boundary
- County Boundary
- Scenic Byway
- Structures

EA Silver IMT GISS
9/13/2021 0522
Acres from IR
NAD 1983 2011 Datum, Lat/Long Grid



115°4.5'W 115°4'W 115°3.5'W 115°3'W 115°2.5'W 115°2'W 115°1.5'W 115°1'W 115°0.5'W 115°W 114°59.5'W 114°59'W 114°58.5'W 114°58'W 114°57.5'W 114°57'W 114°56.5'W 114°56'W 114°55.5'W 114°55'W 114°54.5'W 114°54'W 114°53.5'W 114°53'W 114°52.5'W 114°52'W 114°51.5'W 114°51'W 114°50.5'W 114°50'W 114°49.5'W 114°49'W 114°48.5'W 114°48'W 114°47.5'W 114°47'W 114°46.5'W 114°46'W 114°45.5'W 114°45'W 114°44.5'W 114°44'W