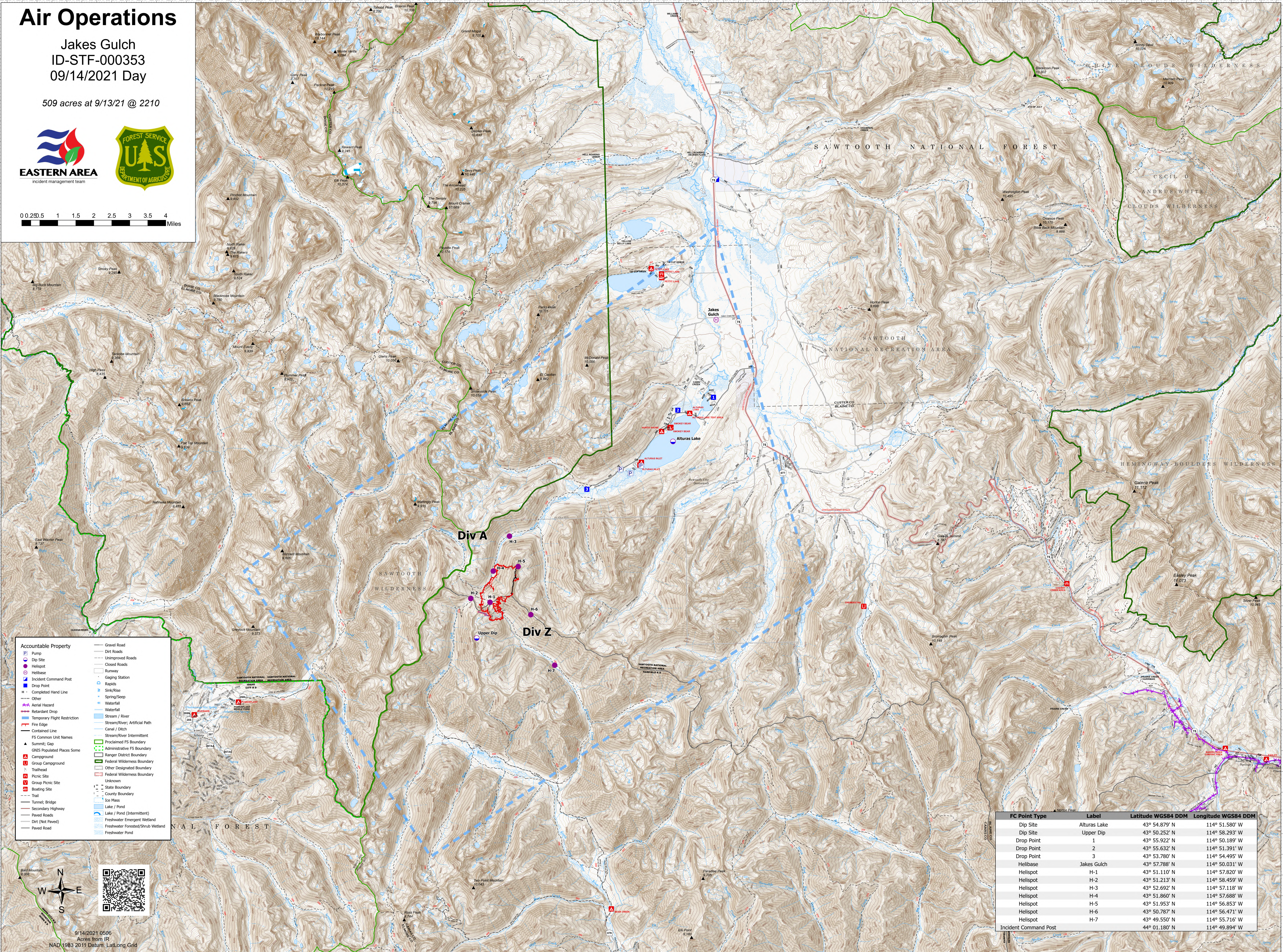
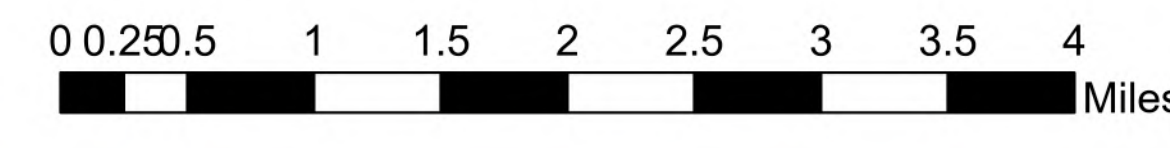


# Air Operations

Jakes Gulch  
ID-STF-000353  
09/14/2021 Day

509 acres at 9/13/21 @ 2210



- Accountable Property**
- Pump
  - Dip Site
  - Helispot
  - Helibase
  - Incident Command Post
  - Drop Point
  - Completed Hand Line
  - Other
  - Aerial Hazard
  - Retardant Drop
  - Temporary Flight Restriction
  - Fire Edge
  - Contained Line
  - FS Common Unit Names
  - Summit/Gap
  - GNIS Populated Places Some
  - Campground
  - Group Campground
  - Picnic Site
  - Group Picnic Site
  - Boating Site
  - Trail
  - Tunnel/Bridge
  - Secondary Highway
  - Paved Roads
  - Dirt (Not Paved)
  - Paved Road
  - Gravel Road
  - Dirt Roads
  - Unimproved Roads
  - Closed Roads
  - Runway
  - Gaging Station
  - Rapids
  - Sink/Rise
  - Spring/Seep
  - Waterfall
  - Stream/River
  - Stream/River, Artificial Path
  - Canal/Ditch
  - Stream/River Intermittent
  - Proclaimed FS Boundary
  - Administrative FS Boundary
  - Ranger District Boundary
  - Federal Wilderness Boundary
  - Other Designated Boundary
  - Federal Wilderness Boundary
  - Unknown
  - State Boundary
  - County Boundary
  - Ice Mass
  - Lake/Pond
  - Lake/Pond (Intermittent)
  - Freshwater Emergent Wetland
  - Freshwater Forested/Shrub Wetland
  - Freshwater Pond

**Div A**

**Div Z**

FC Point Type	Label	Latitude WGS84 DDM	Longitude WGS84 DDM
Dip Site	Alturas Lake	43° 54.879' N	114° 51.580' W
Dip Site	Upper Dip	43° 50.252' N	114° 58.293' W
Drop Point	1	43° 55.922' N	114° 50.189' W
Drop Point	2	43° 55.632' N	114° 51.391' W
Drop Point	3	43° 53.780' N	114° 54.495' W
Helibase	Jakes Gulch	43° 57.788' N	114° 50.031' W
Helispot	H-1	43° 51.110' N	114° 57.820' W
Helispot	H-2	43° 51.213' N	114° 58.459' W
Helispot	H-3	43° 52.692' N	114° 57.118' W
Helispot	H-4	43° 51.860' N	114° 57.688' W
Helispot	H-5	43° 51.953' N	114° 56.853' W
Helispot	H-6	43° 50.787' N	114° 56.471' W
Helispot	H-7	43° 49.550' N	114° 55.716' W
Incident Command Post		44° 01.180' N	114° 49.894' W

9/14/2021 0506  
Acres from IR  
NAD 1983 2011 Datum, Lat/Long Grid