



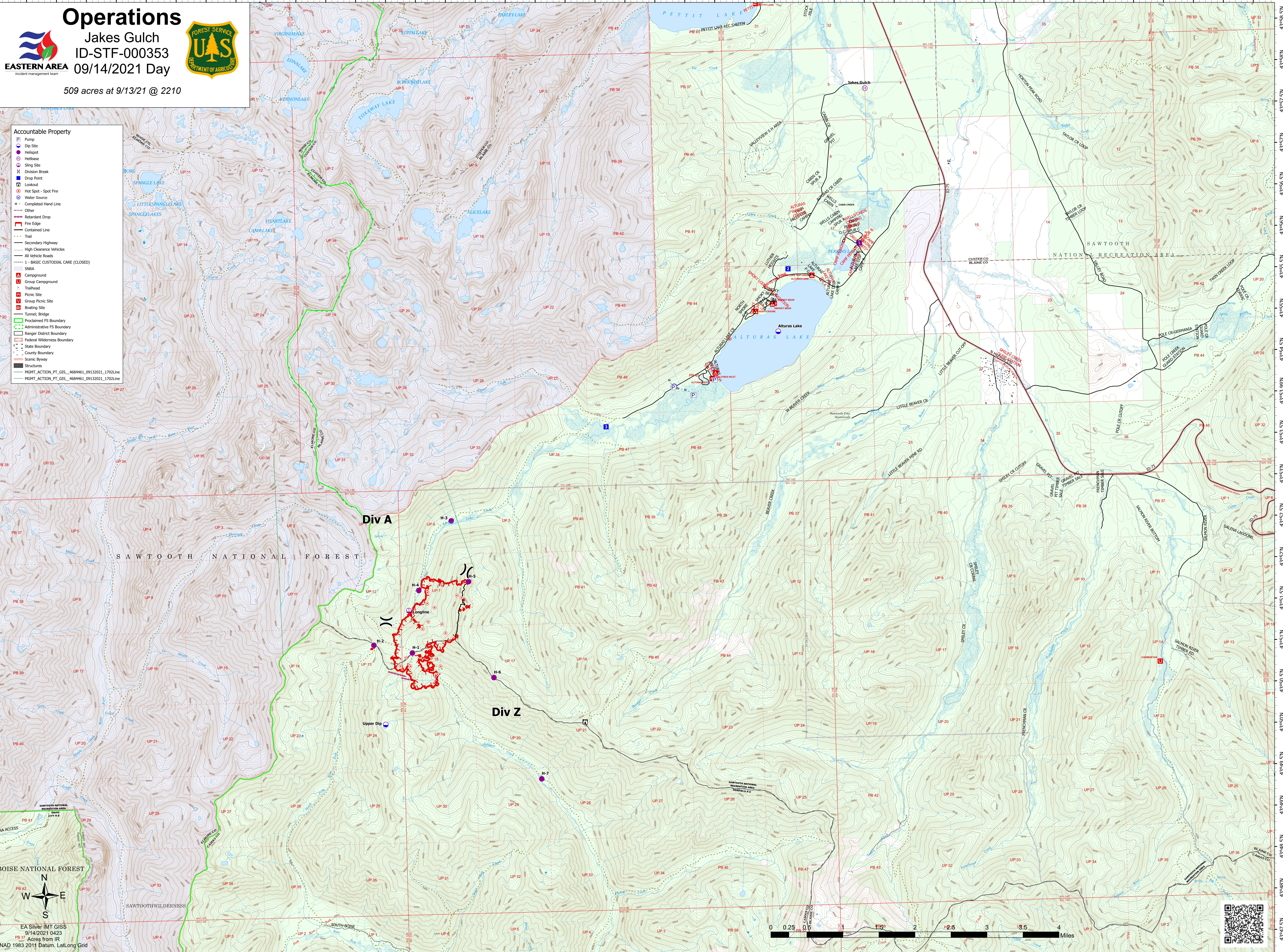
# Operations

Jakes Gulch  
 ID-STF-000353  
 09/14/2021 Day

509 acres at 9/13/21 @ 2210

- Accountable Property**
- Pump
  - Dip Site
  - Helispot
  - Helibase
  - Sling Site
  - X Division Break
  - Drop Point
  - Lookout
  - Hot Spot - Spot Fire
  - Water Source
  - H - Completed Hand Line
  - Other
  - Retardant Drop
  - Fire Edge
  - Contained Line
  - Trail
  - Secondary Highway
  - High Clearance Vehicles
  - All Vehicle Roads
  - 1-BASIC CUSTODIAL CARE (CLOSED)
  - SNRA
  - Campground
  - Group Campground
  - Trailhead
  - Picnic Site
  - Group Picnic Site
  - Boating Site
  - Tunnel: Bridge
  - Proclaimed FS Boundary
  - Administrative FS Boundary
  - Ranger District Boundary
  - Federal Wilderness Boundary
  - State Boundary
  - County Boundary
  - Scenic Boundary
  - Structures
  - MGMT\_ACTION\_PT\_GIS\_4684461\_09132021\_1702Line
  - MGMT\_ACTION\_PT\_GIS\_4684461\_09132021\_1702Line



BOISE NATIONAL FOREST

SAWTOOTH WILDERNESS

SAWTOOTH NATIONAL FOREST

SAWTOOTH NATIONAL RECREATION AREA

EA Silver IMT GISS  
 9/14/2021 0423  
 Acres from IR  
 NAD 1983 2011 Datum, LatLong Grid

