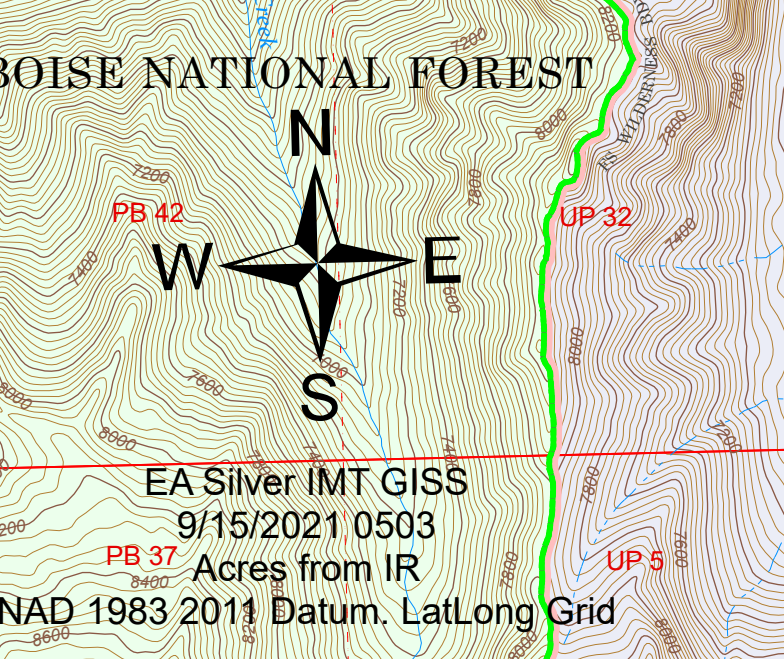
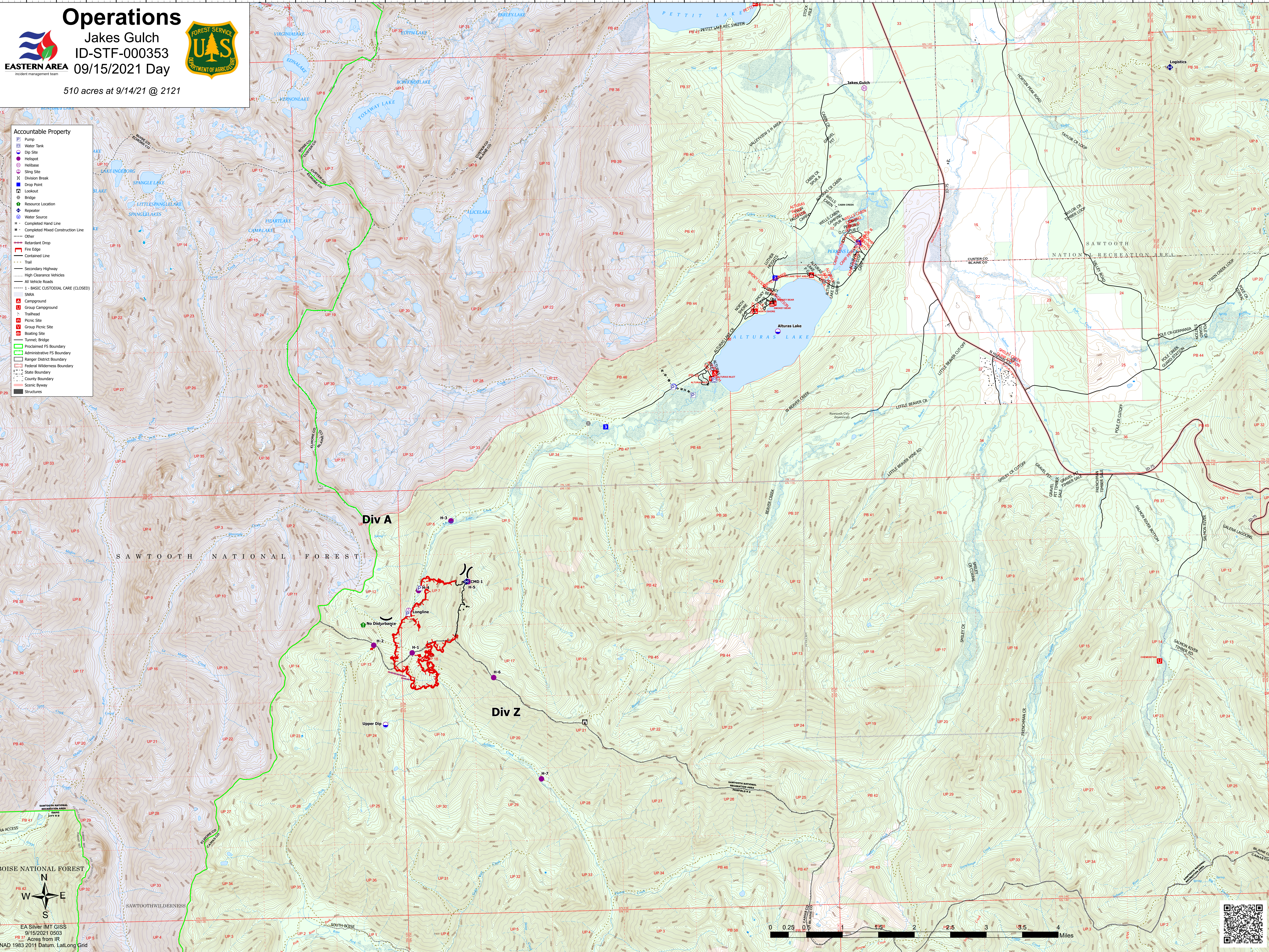


- Accountable Property**
- Pump
  - Water Tank
  - Dip Site
  - Helispot
  - Heli-base
  - Sling Site
  - Division Break
  - Drop Point
  - Lookout
  - Bridge
  - Resource Location
  - Repeater
  - Water Source
  - Completed Hand Line
  - Completed Mixed Construction Line
  - Other
  - Retardant Drop
  - Fire Edge
  - Contained Line
  - Trail
  - Secondary Highway
  - High Clearance Vehicles
  - All Vehicle Roads
  - 1-BASIC CUSTODIAL CARE (CLOSED)
  - SNRA
  - Campground
  - Group Campground
  - Trailhead
  - Picnic Site
  - Group Picnic Site
  - Boating Site
  - Tunnel; Bridge
  - Proclaimed FS Boundary
  - Administrative FS Boundary
  - Ranger District Boundary
  - Federal Wilderness Boundary
  - State Boundary
  - County Boundary
  - Scenic Byway
  - Structures



EA Silver IMT GIS  
 9/15/2021 0503  
 Acres from IR  
 NAD 1983 2011 Datum, LatLong Grid

