

# Accountable Property

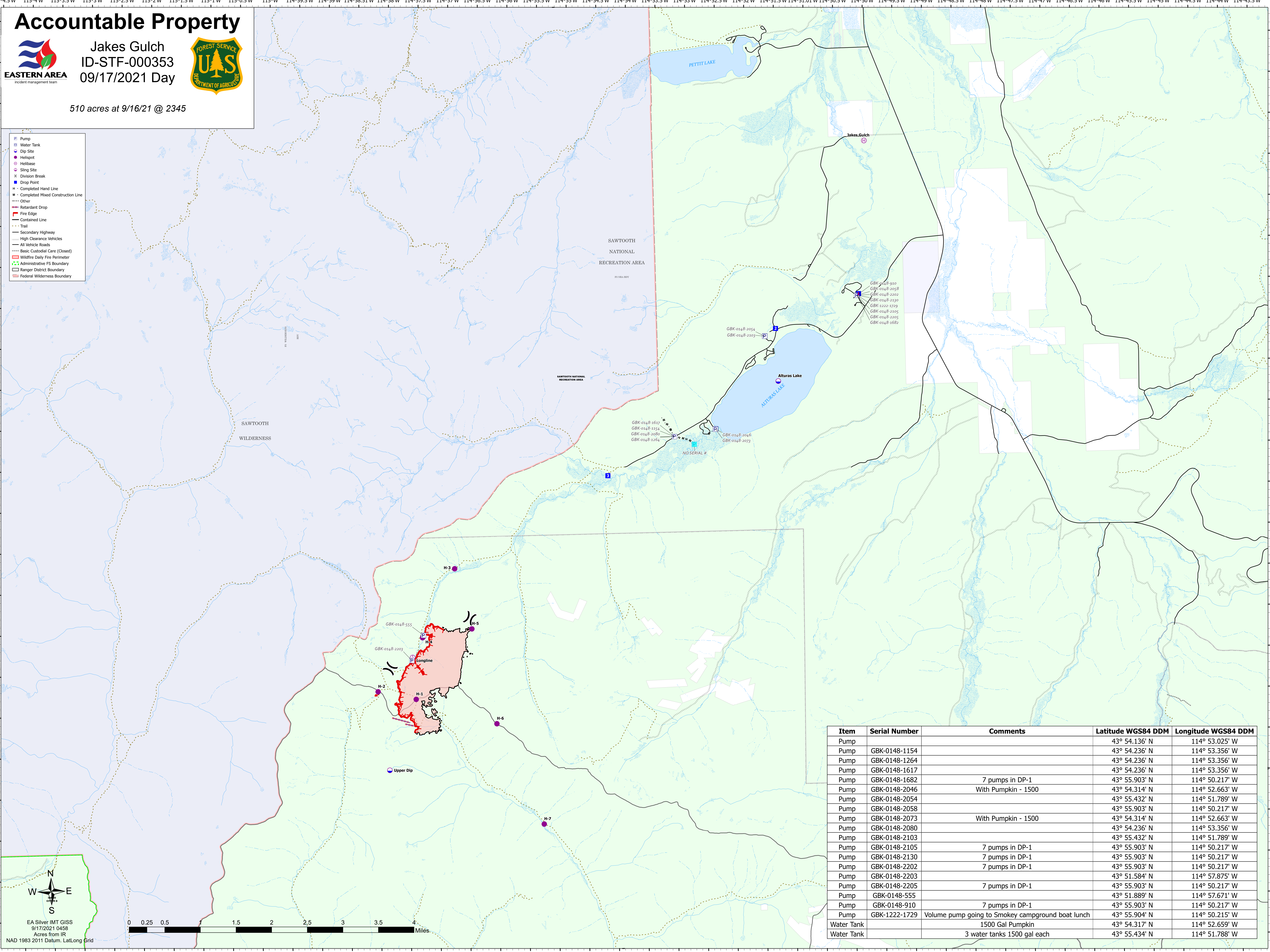


Jakes Gulch  
ID-STF-000353  
09/17/2021 Day

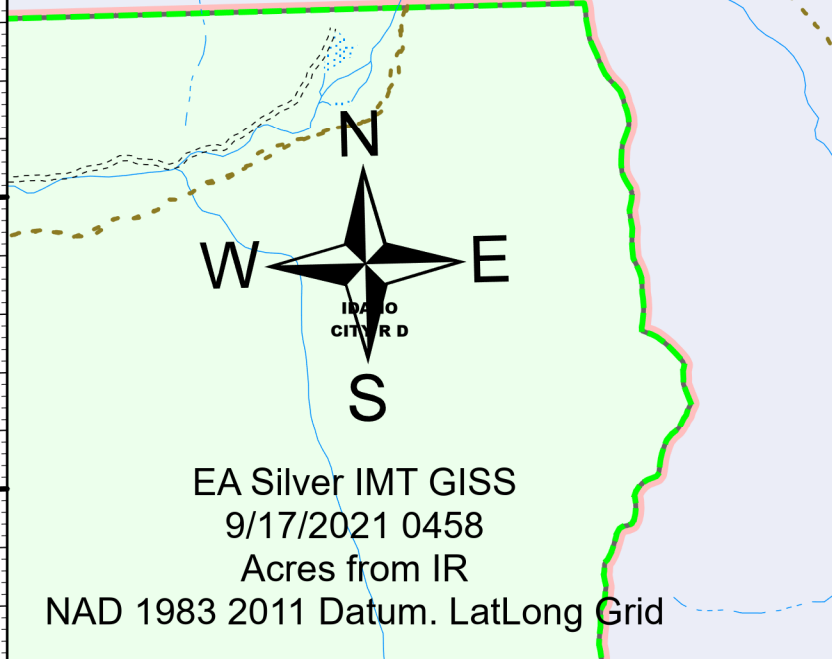


510 acres at 9/16/21 @ 2345

- Pump
- Water Tank
- Dip Site
- Helispot
- Holtbase
- Sling Site
- Division Break
- Drop Point
- Completed Hand Line
- Completed Mixed Construction Line
- Other
- Retardant Drop
- Fire Edge
- Contained Line
- Trail
- Secondary Highway
- High Clearance Vehicles
- All Vehicle Roads
- Basic Custodial Care (Closed)
- Wildfire Daily Fire Perimeter
- Administrative FS Boundary
- Ranger District Boundary
- Federal Wilderness Boundary



Item	Serial Number	Comments	Latitude WGS84 DDM	Longitude WGS84 DDM
Pump			43° 54.136' N	114° 53.025' W
Pump	GBK-0148-1154		43° 54.236' N	114° 53.356' W
Pump	GBK-0148-1264		43° 54.236' N	114° 53.356' W
Pump	GBK-0148-1617		43° 54.236' N	114° 53.356' W
Pump	GBK-0148-1682	7 pumps in DP-1	43° 55.903' N	114° 50.217' W
Pump	GBK-0148-2046	With Pumpkin - 1500	43° 54.314' N	114° 52.663' W
Pump	GBK-0148-2054		43° 55.432' N	114° 51.789' W
Pump	GBK-0148-2058		43° 55.903' N	114° 50.217' W
Pump	GBK-0148-2073	With Pumpkin - 1500	43° 54.314' N	114° 52.663' W
Pump	GBK-0148-2080		43° 54.236' N	114° 53.356' W
Pump	GBK-0148-2103		43° 55.432' N	114° 51.789' W
Pump	GBK-0148-2105	7 pumps in DP-1	43° 55.903' N	114° 50.217' W
Pump	GBK-0148-2130	7 pumps in DP-1	43° 55.903' N	114° 50.217' W
Pump	GBK-0148-2202	7 pumps in DP-1	43° 55.903' N	114° 50.217' W
Pump	GBK-0148-2203		43° 51.584' N	114° 57.875' W
Pump	GBK-0148-2205	7 pumps in DP-1	43° 55.903' N	114° 50.217' W
Pump	GBK-0148-555		43° 51.889' N	114° 57.671' W
Pump	GBK-0148-910	7 pumps in DP-1	43° 55.903' N	114° 50.217' W
Pump	GBK-1222-1729	Volume pump going to Smokey campground boat lunch	43° 55.904' N	114° 50.215' W
Water Tank		1500 Gal Pumpkin	43° 54.317' N	114° 52.659' W
Water Tank		3 water tanks 1500 gal each	43° 55.434' N	114° 51.788' W



EA Silver IMT GIS  
9/17/2021 0458  
Acres from IR  
NAD 1983 2011 Datum, LatLong Grid