



115°4.5'W 115°3.5'W 115°2.5'W 115°1.5'W 115°0.5'W 115°W 114°59.5'W 114°58.5'W 114°57.5'W 114°56.5'W 114°55.5'W 114°54.5'W 114°53.5'W 114°52.5'W 114°51.5'W 114°50.5'W 114°49.5'W 114°48.5'W 114°47.5'W 114°46.5'W 114°45.5'W 114°44.5'W 114°43.5'W

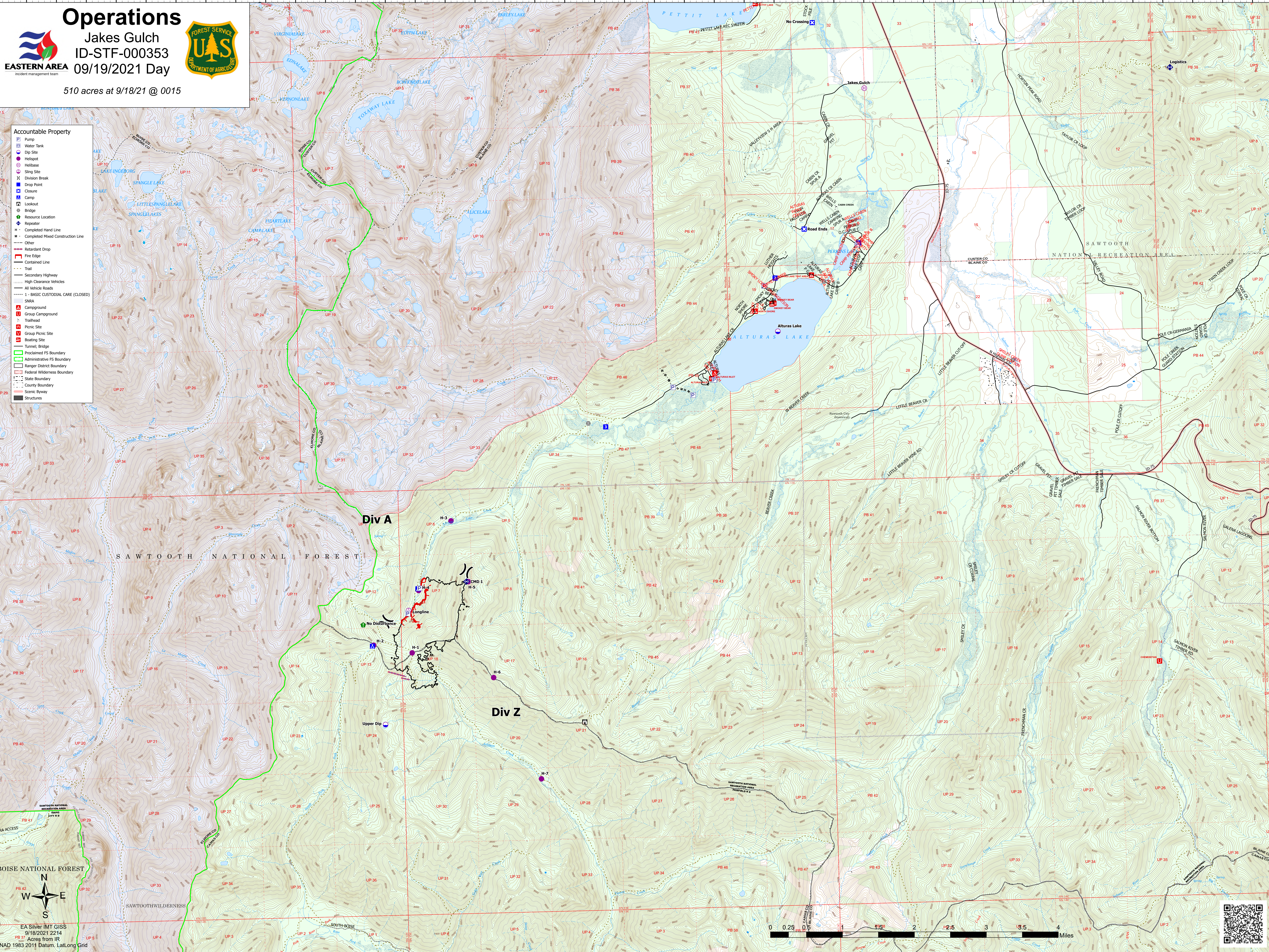
# Operations

Jakes Gulch  
ID-STF-000353  
09/19/2021 Day

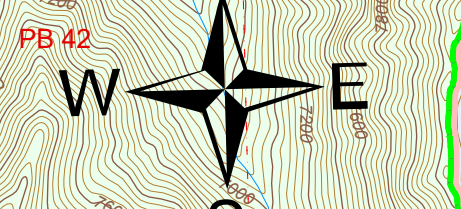
510 acres at 9/18/21 @ 0015

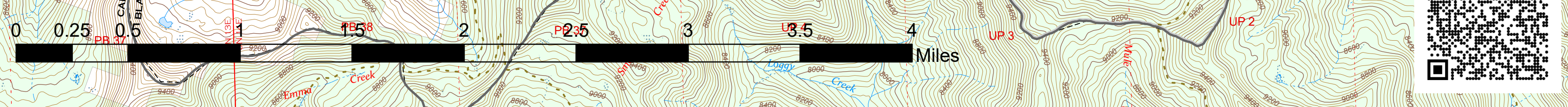
- Accountable Property**
- Pump
  - Water Tank
  - Dip Site
  - Helispot
  - Heli-base
  - Sling Site
  - Division Break
  - Drop Point
  - Closure
  - Camp
  - Lookout
  - Bridge
  - Resource Location
  - Repeater
  - Completed Hand Line
  - Completed Mixed Construction Line
  - Other
  - Retardant Drop
  - Fire Edge
  - Contained Line
  - Trail
  - Secondary Highway
  - High Clearance Vehicles
  - All Vehicle Roads
  - BASIC CUSTODIAL CARE (CLOSED)
  - Campground
  - Group Campground
  - Trailhead
  - Picnic Site
  - Group Picnic Site
  - Boating Site
  - Tunnel; Bridge
  - Proclaimed FS Boundary
  - Administrative FS Boundary
  - Ranger District Boundary
  - Federal Wilderness Boundary
  - State Boundary
  - County Boundary
  - Scenic Byway
  - Structures



BOISE NATIONAL FOREST



EA Silver IMT GISS  
9/18/2021 2214  
Acres from IR  
NAD 1983 2011 Datum, LatLong Grid



115°4.5'W 115°4'W 115°3.5'W 115°3'W 115°2.5'W 115°2'W 115°1.5'W 115°1'W 115°0.5'W 115°W 114°59.5'W 114°59'W 114°58.5'W 114°58'W 114°57.5'W 114°57'W 114°56.5'W 114°56'W 114°55.5'W 114°55'W 114°54.5'W 114°54'W 114°53.5'W 114°53'W 114°52.5'W 114°52'W 114°51.5'W 114°51'W 114°50.5'W 114°50'W 114°49.5'W 114°49'W 114°48.5'W 114°48'W 114°47.5'W 114°47'W 114°46.5'W 114°46'W 114°45.5'W 114°45'W 114°44.5'W 114°44'W