



115°4.5'W 115°3.5'W 115°2.5'W 115°1.5'W 115°0.5'W 115°W 114°59.5'W 114°58.5'W 114°57.5'W 114°56.5'W 114°55.5'W 114°54.5'W 114°53.5'W 114°52.5'W 114°51.5'W 114°50.5'W 114°49.5'W 114°48.5'W 114°47.5'W 114°46.5'W 114°45.5'W 114°44.5'W 114°43.5'W

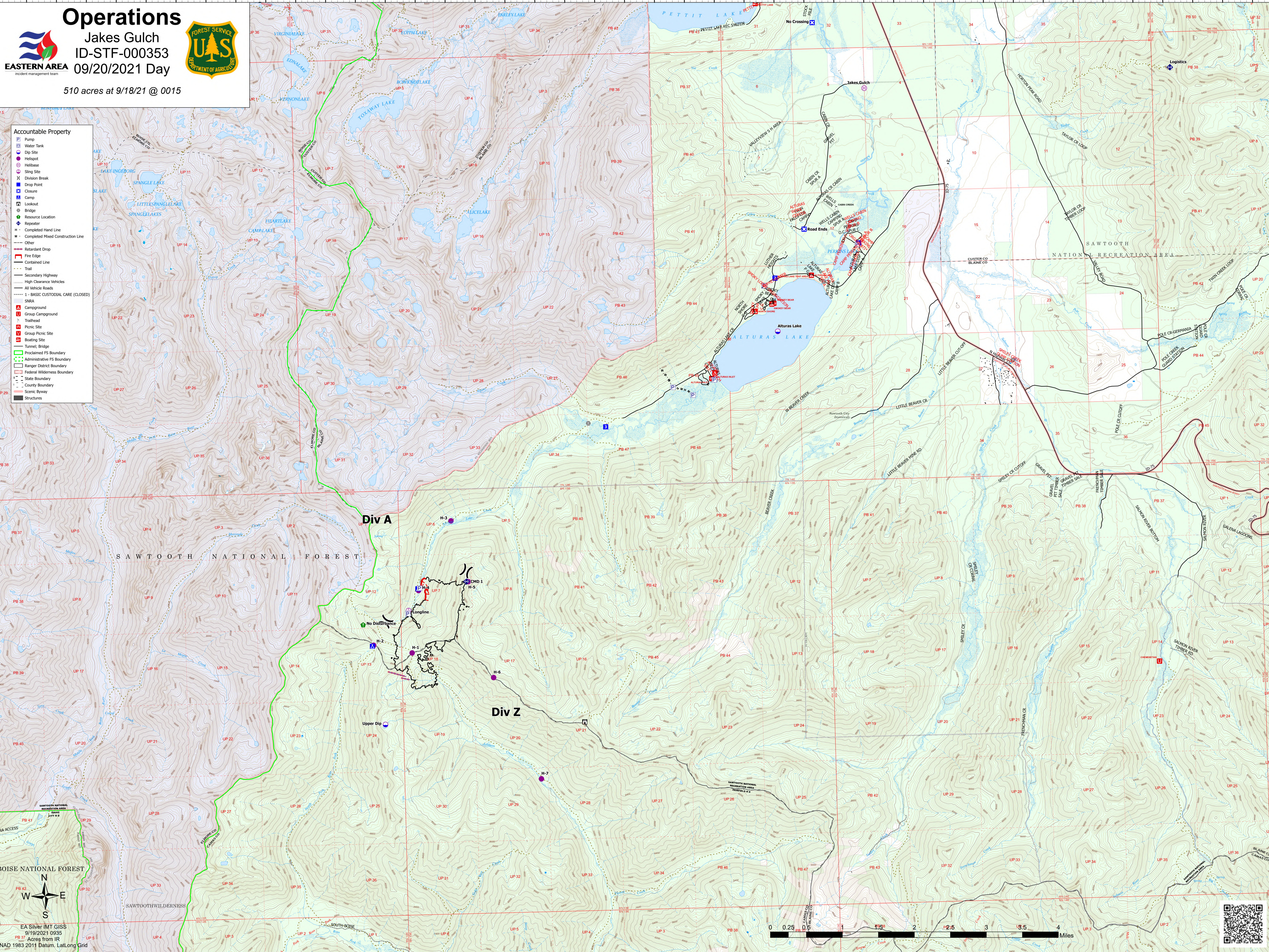
Operations

Jakes Gulch
ID-STF-000353
09/20/2021 Day

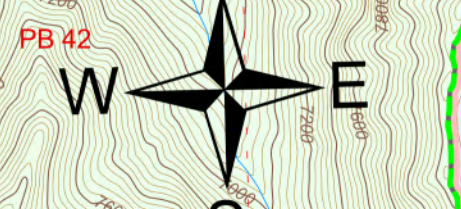
510 acres at 9/18/21 @ 0015

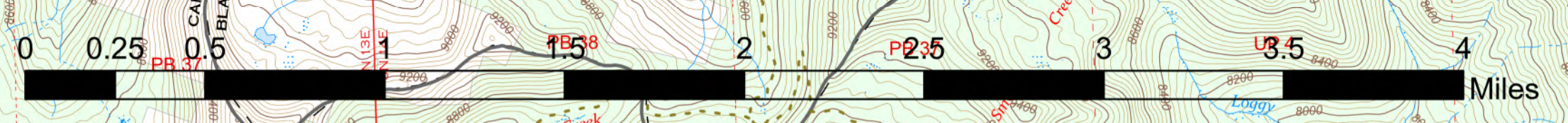
- Accountable Property**
- Pump
 - Water Tank
 - Dip Site
 - Helispot
 - Helibase
 - Sling Site
 - Division Break
 - Drop Point
 - Closure
 - Camp
 - Lookout
 - Bridge
 - Resource Location
 - Repeater
 - Completed Hand Line
 - Completed Mixed Construction Line
 - Other
 - Retardant Drop
 - Fire Edge
 - Contained Line
 - Trail
 - Secondary Highway
 - High Clearance Vehicles
 - All Vehicle Roads
 - BASIC CUSTODIAL CARE (CLOSED)
 - SMA
 - Campground
 - Group Campground
 - Trailhead
 - Picnic Site
 - Group Picnic Site
 - Boating Site
 - Tunnel; Bridge
 - Proclaimed FS Boundary
 - Administrative FS Boundary
 - Ranger District Boundary
 - Federal Wilderness Boundary
 - State Boundary
 - County Boundary
 - Scenic Byway
 - Structures



BOISE NATIONAL FOREST



EA Silver IMT GISS
9/19/2021 0935
Acres from IR
NAD 1983 2011 Datum, LatLong Grid



115°4.5'W 115°4'W 115°3.5'W 115°2.5'W 115°1.5'W 115°0.5'W 115°W 114°59.5'W 114°58.5'W 114°57.5'W 114°56.5'W 114°55.5'W 114°54.5'W 114°53.5'W 114°52.5'W 114°51.5'W 114°50.5'W 114°49.5'W 114°48.5'W 114°47.5'W 114°46.5'W 114°45.5'W 114°44.5'W 114°43.5'W