

- Pump
- Water Tank
- Aerial Hazard
- Dip Site
- Helispot
- Helibase
- Sling Site
- Division Break
- Incident Command Post
- Drop Point
- Closure
- Camp
- Lookout
- Resource Location
- Repeater
- Completed Hand Line
- Completed Mixed Construction Line
- Management Action Point
- Other
- Retardant Drop
- Fire Edge
- Contained Line
- Trail
- Secondary Highway
- High Clearance Vehicles
- All Vehicle Roads
- 1-BASIC CUSTODIAL CARE (CLOSED)
- call other values >
- Wilderness
- Campground
- Group Campground
- Trailhead
- Picnic Site
- Group Picnic Site
- Boating Site
- Tunnel; Bridge
- Proclaimed FS Boundary
- Administrative FS Boundary
- Ranger District Boundary
- Federal Wilderness Boundary
- State Boundary
- County Boundary
- Scenic Byway

Potential Control Lines

- High
- Moderate
- Low

Satellite (VIIRS) Thermal Hotspots and Fire Activity

- > 750
- 300-749
- 100-299
- 10-99
- 0-9

Structures

PACE

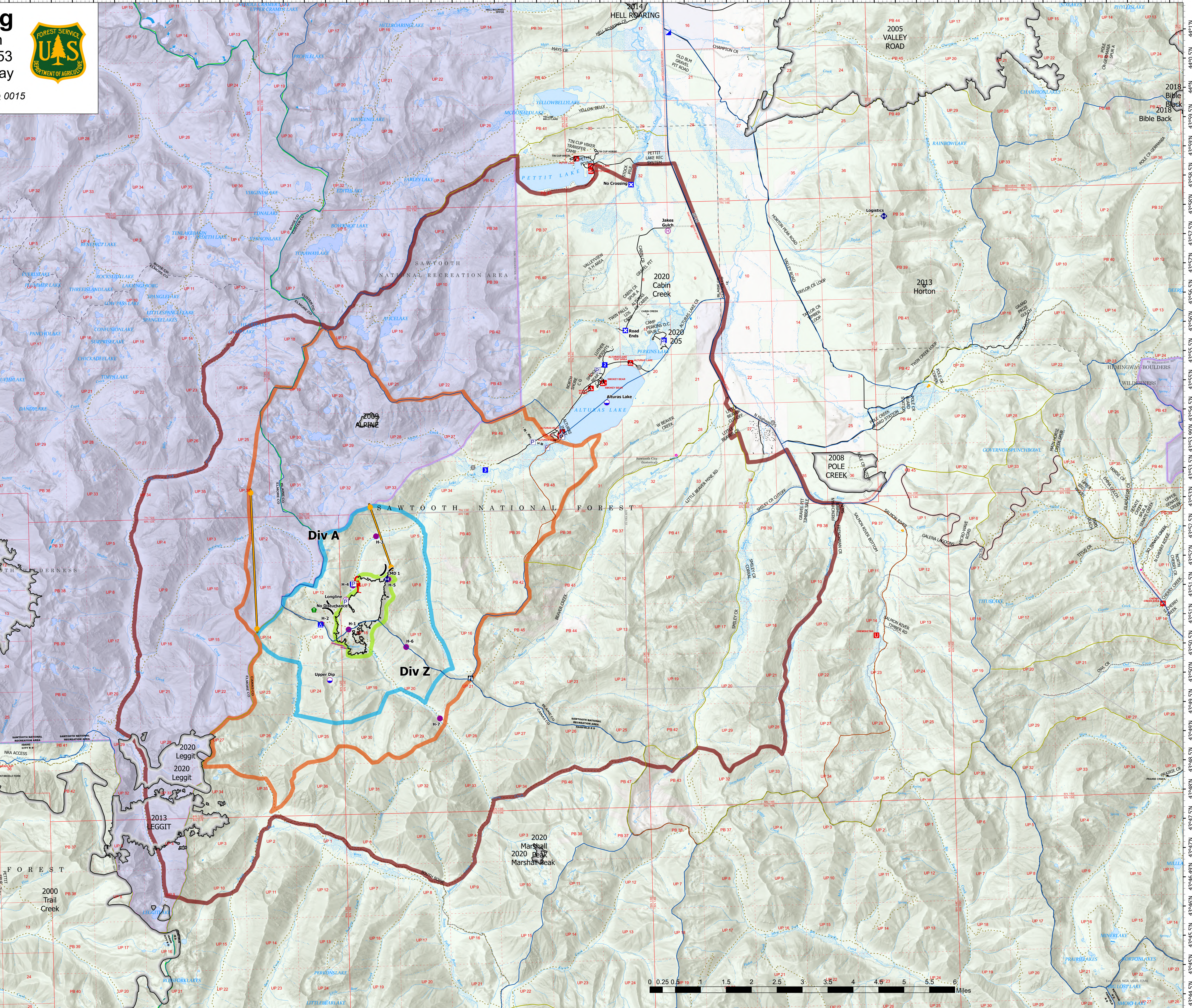
- Primary
- Alternate
- Contingency
- Emergency

R04\_VAR\_Points\_2020

- Communications
- Cultural Site
- Facilities
- Infrastructure
- Range
- Recreation
- Safety - Hazards
- Structures

R04\_VAR\_Lines\_2020

- Communications
- Cultural Site
- Facilities
- Infrastructure
- Range
- Recreation
- Structures
- Interagency Fire Perimeter History



EA Silver IMT GISS  
9/19/2021 0936  
Acres from IR  
NAD 1983 2011 Datum, Lat/Long Grid