

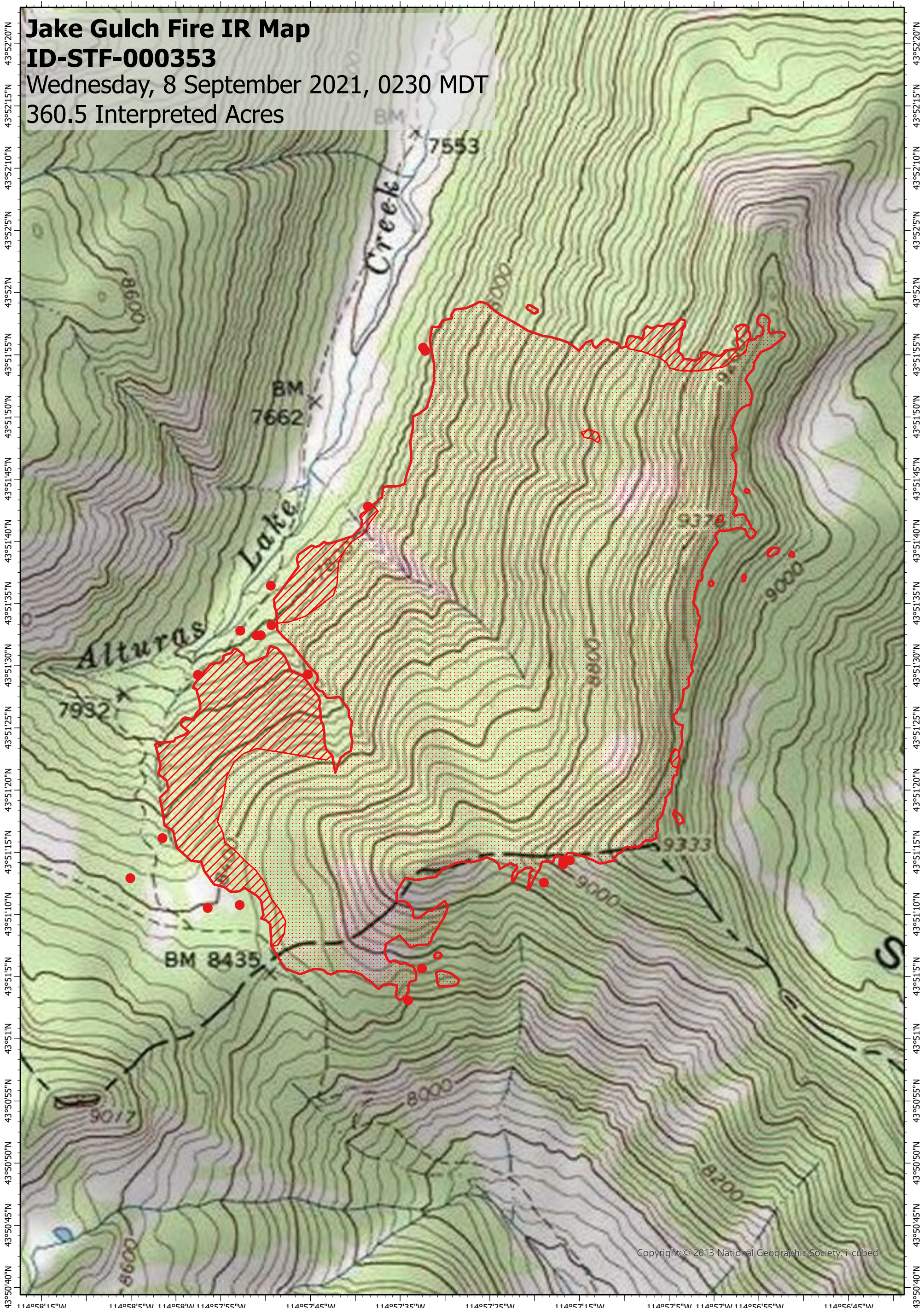
114°58'15"W 114°58'5"W 114°58'W 114°57'55"W 114°57'45"W 114°57'35"W 114°57'25"W 114°57'15"W 114°57'5"W 114°57'W 114°56'55"W 114°56'45"W

Jake Gulch Fire IR Map

ID-STF-000353

Wednesday, 8 September 2021, 0230 MDT

360.5 Interpreted Acres



Copyright © 2013 National Geographic Society, i-cubed

Legend

- Isolated Heat
- Burn Perimeter
- Intense Heat
- Scattered Heat

Scale: 1:12,000
 Projection: WGS 1984
 Produced by: Owyhee Air Research, LLC
 IR Interpreter: D. Merriman
 Contact: fire@owyheear.com (208) 442-5405

