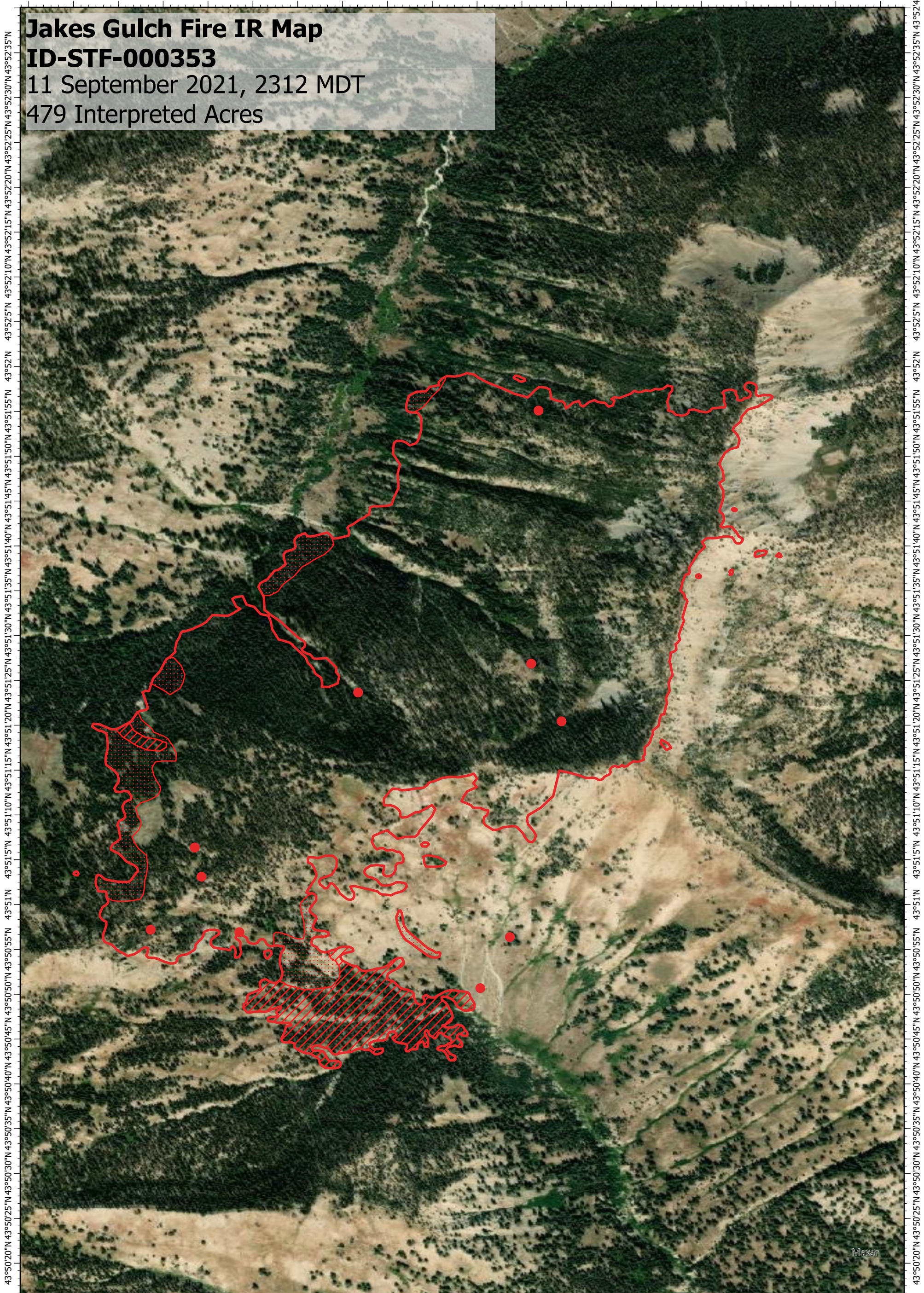


114°58'15"W 114°58'5"W 114°58'W 114°57'55"W 114°57'45"W 114°57'35"W 114°57'25"W 114°57'15"W 114°57'5"W 114°57'W 114°56'55"W 114°56'45"W

Jakes Gulch Fire IR Map
ID-STF-000353
11 September 2021, 2312 MDT
479 Interpreted Acres



114°58'15"W 114°58'5"W 114°58'W 114°57'55"W 114°57'45"W 114°57'35"W 114°57'25"W 114°57'15"W 114°57'5"W 114°57'W 114°56'55"W 114°56'45"W

Legend

- Isolated Heat
- Burn Perimeter
- / / / / / Intense Heat
- Scattered Heat

Scale: 1:12,000
 Projection: WGS 1984
 Produced by: Owyhee Air Research, LLC
 IR Interpreter: S. Osberg
 Contact: fire@owyheeair.com (208) 442-5405

