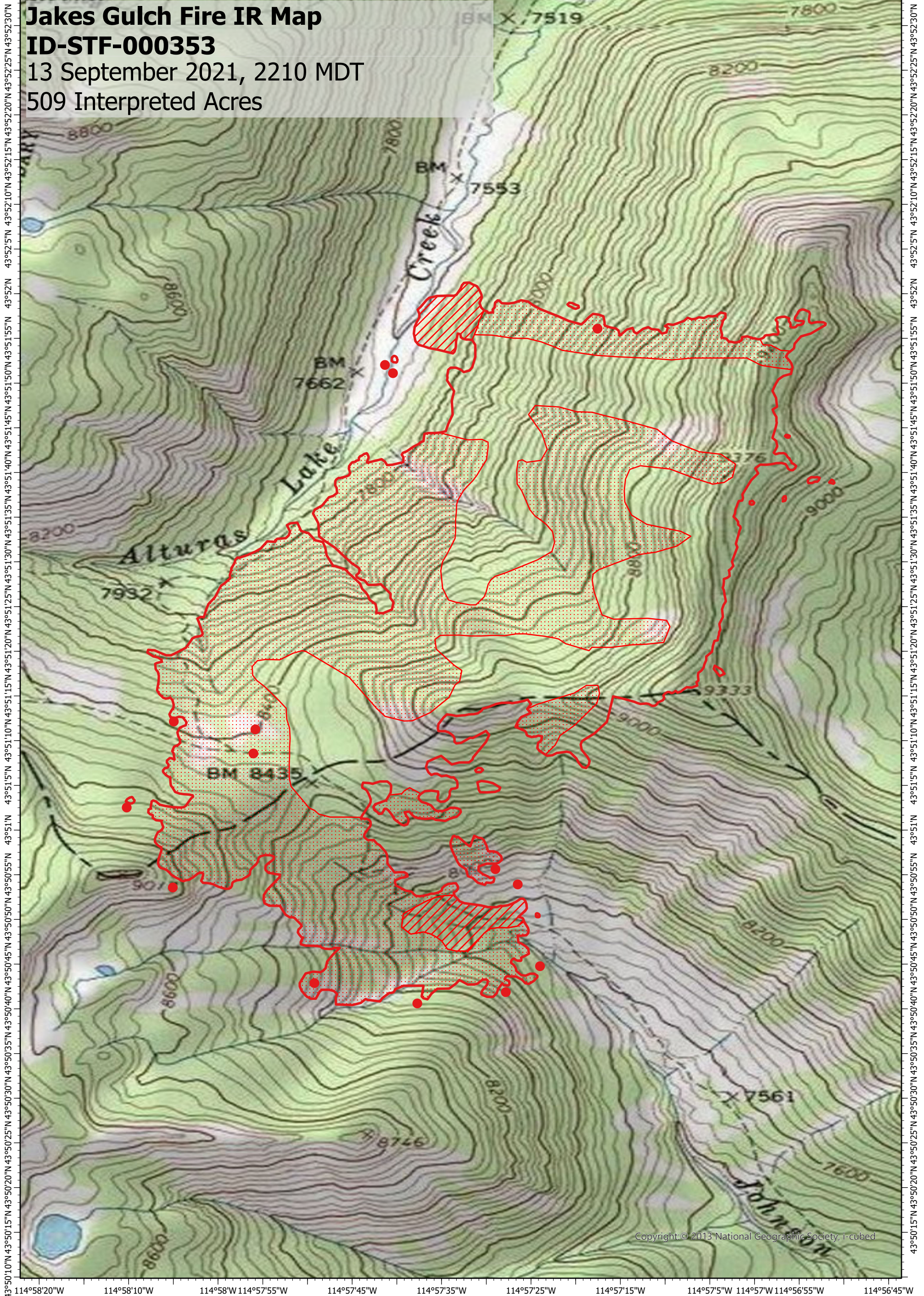


114°58'20"W 114°58'10"W 114°58'W 114°57'55"W 114°57'45"W 114°57'35"W 114°57'25"W 114°57'15"W 114°57'5"W 114°57'W 114°56'55"W 114°56'45"W

**Jakes Gulch Fire IR Map**  
**ID-STF-000353**  
13 September 2021, 2210 MDT  
509 Interpreted Acres



Copyright: © 2013 National Geographic Society, i-cubed

114°58'20"W 114°58'10"W 114°58'W 114°57'55"W 114°57'45"W 114°57'35"W 114°57'25"W 114°57'15"W 114°57'5"W 114°57'W 114°56'55"W 114°56'45"W

**Legend**

- Isolated Heat
- Burn Perimeter
- ▨ Intense Heat
- ▤ Scattered Heat

Scale: 1:12,000  
 Projection: WGS 1984  
 Produced by: Owyhee Air Research, LLC  
 IR Interpreter: D. Merriman  
 Contact: fire@owyheeair.com (208) 442-5405

