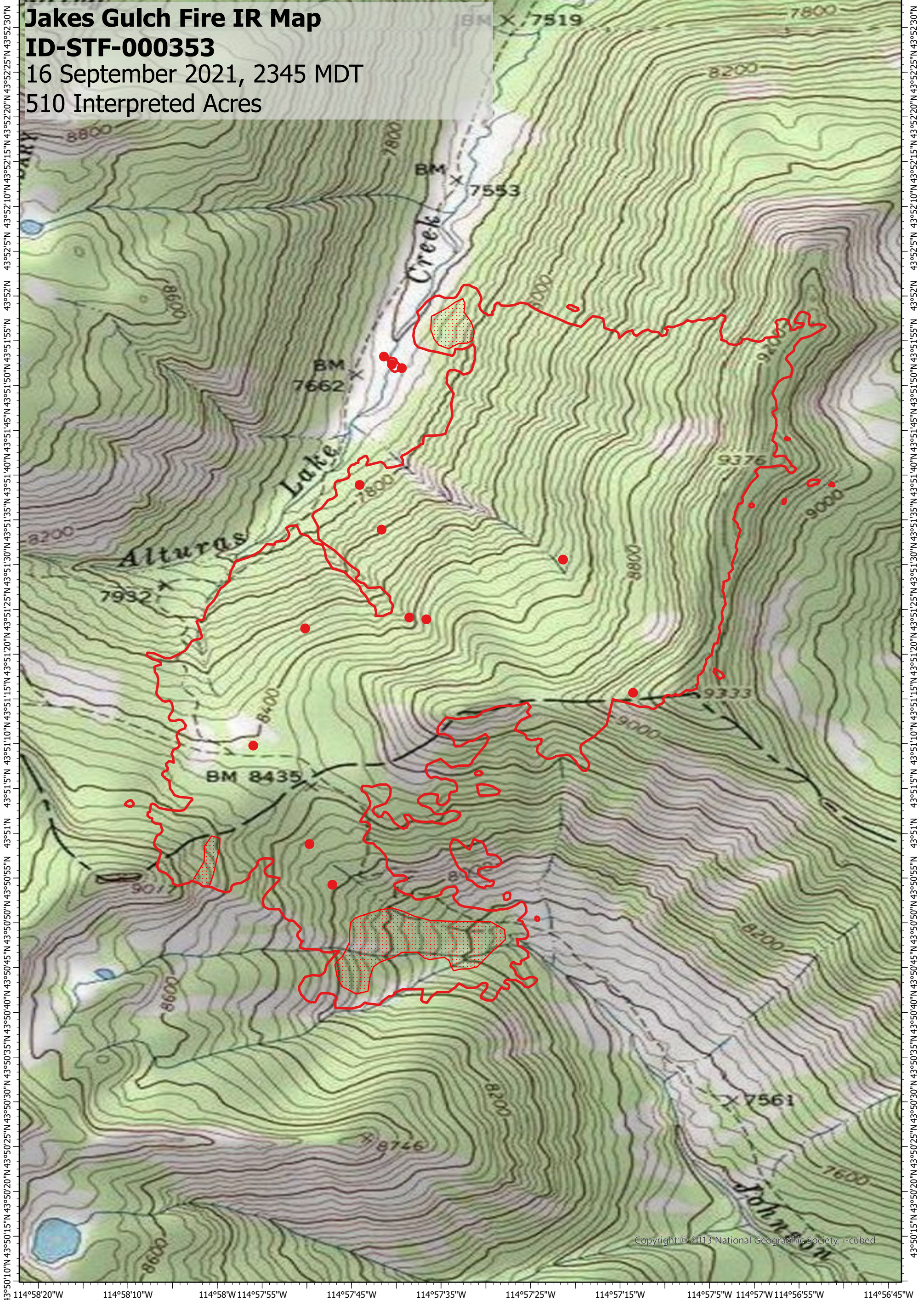


114°58'20"W 114°58'10"W 114°58'W 114°57'55"W 114°57'45"W 114°57'35"W 114°57'25"W 114°57'15"W 114°57'5"W 114°57'W 114°56'55"W 114°56'45"W

Jakes Gulch Fire IR Map
ID-STF-000353
16 September 2021, 2345 MDT
510 Interpreted Acres

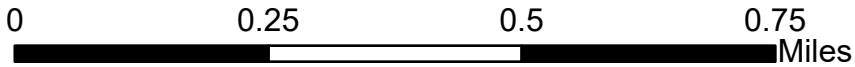


Copyright: © 2013 National Geographic Society, I-cubed

Legend

- Isolated Heat
- Burn Perimeter
- Scattered Heat

Scale: 1:12,000
 Projection: WGS 1984
 Produced by: Owyhee Air Research, LLC
 IR Interpreter: D. Merriman
 Contact: fire@owyheeair.com (208) 442-5405



43°50'10"N 43°50'15"N 43°50'20"N 43°50'25"N 43°50'30"N 43°50'35"N 43°50'40"N 43°50'45"N 43°50'50"N 43°50'55"N 43°51'N 43°51'5"N 43°51'10"N 43°51'15"N 43°51'20"N 43°51'25"N 43°51'30"N 43°51'35"N 43°51'40"N 43°51'45"N 43°51'50"N 43°51'55"N 43°52'N 43°52'5"N 43°52'10"N 43°52'15"N 43°52'20"N 43°52'25"N 43°52'30"N