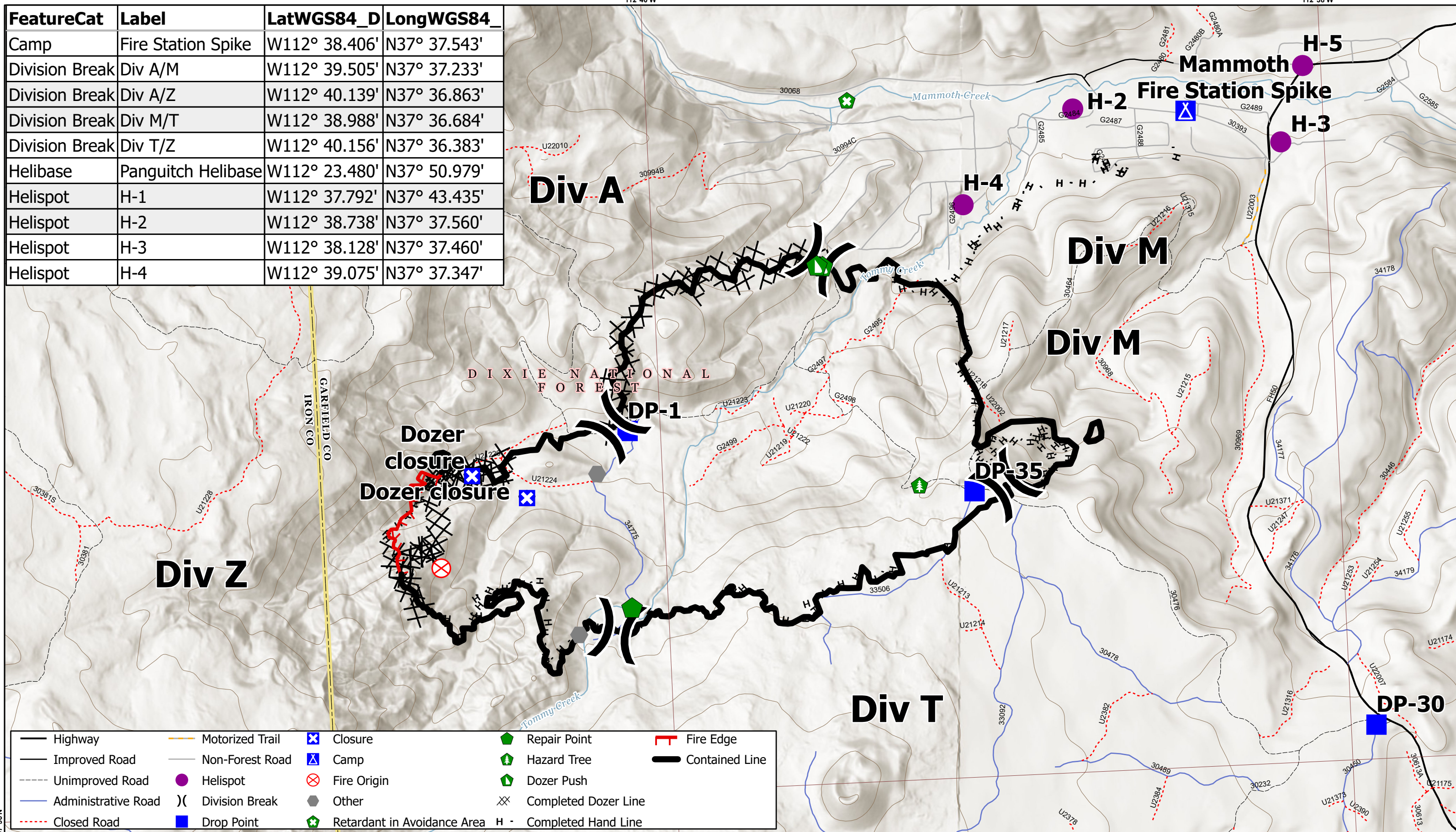


| FeatureCat | Label | LatWGS84_D | LongWGS84_ |
|----------------|--------------------|---------------|--------------|
| Camp | Fire Station Spike | W112° 38.406' | N37° 37.543' |
| Division Break | Div A/M | W112° 39.505' | N37° 37.233' |
| Division Break | Div A/Z | W112° 40.139' | N37° 36.863' |
| Division Break | Div M/T | W112° 38.988' | N37° 36.684' |
| Division Break | Div T/Z | W112° 40.156' | N37° 36.383' |
| Helibase | Panguitch Helibase | W112° 23.480' | N37° 50.979' |
| Helispot | H-1 | W112° 37.792' | N37° 43.435' |
| Helispot | H-2 | W112° 38.738' | N37° 37.560' |
| Helispot | H-3 | W112° 38.128' | N37° 37.460' |
| Helispot | H-4 | W112° 39.075' | N37° 37.347' |



| | | | | | | | | | |
|--|---------------------|--|-----------------|--|-----------------------------|--|----------------------|--|----------------|
| | Highway | | Motorized Trail | | Closure | | Repair Point | | Fire Edge |
| | Improved Road | | Non-Forest Road | | Camp | | Hazard Tree | | Contained Line |
| | Unimproved Road | | Helispot | | Fire Origin | | Dozer Push | | |
| | Administrative Road | | Division Break | | Other | | Completed Dozer Line | | |
| | Closed Road | | Drop Point | | Retardant in Avoidance Area | | Completed Hand Line | | |