

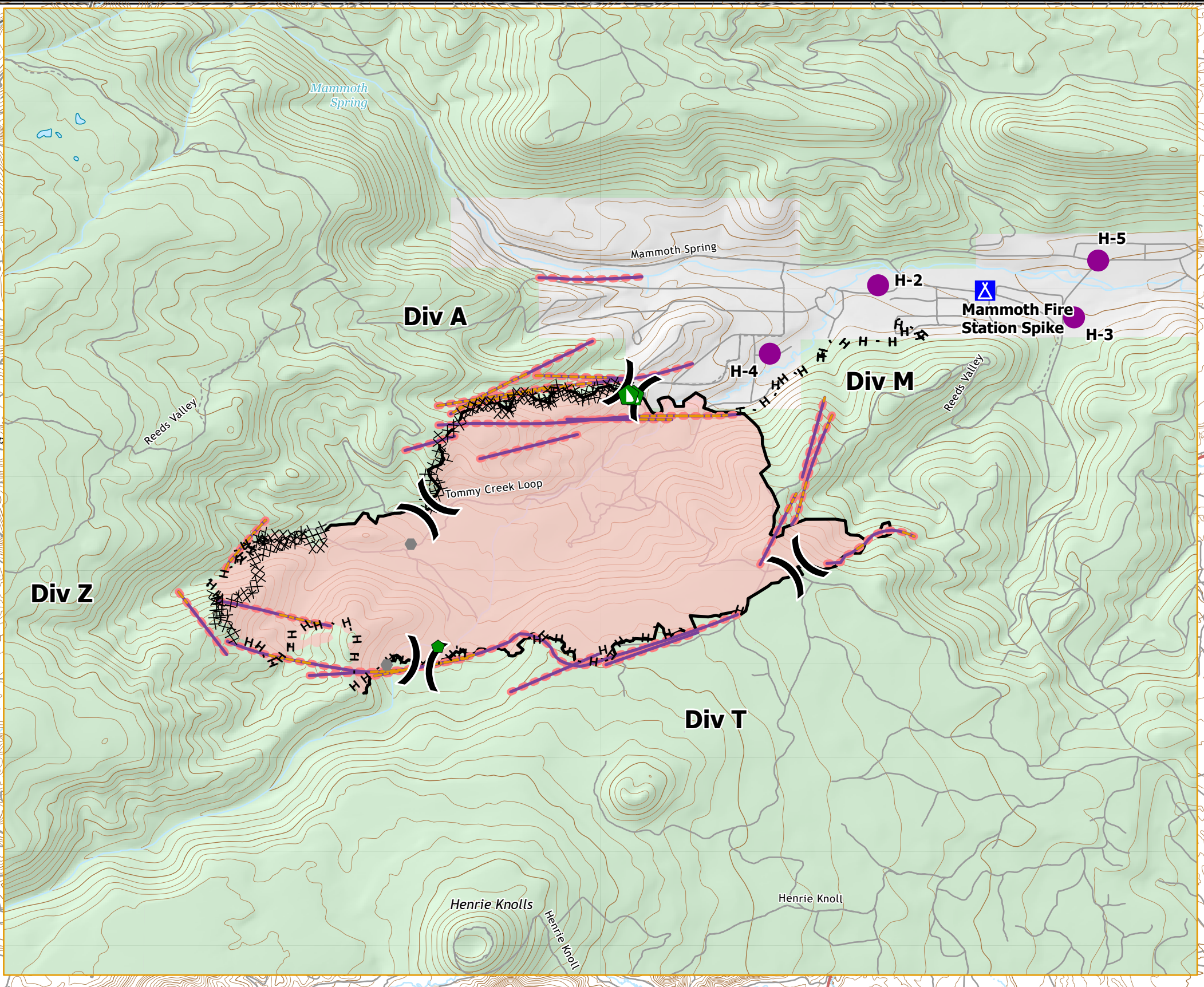
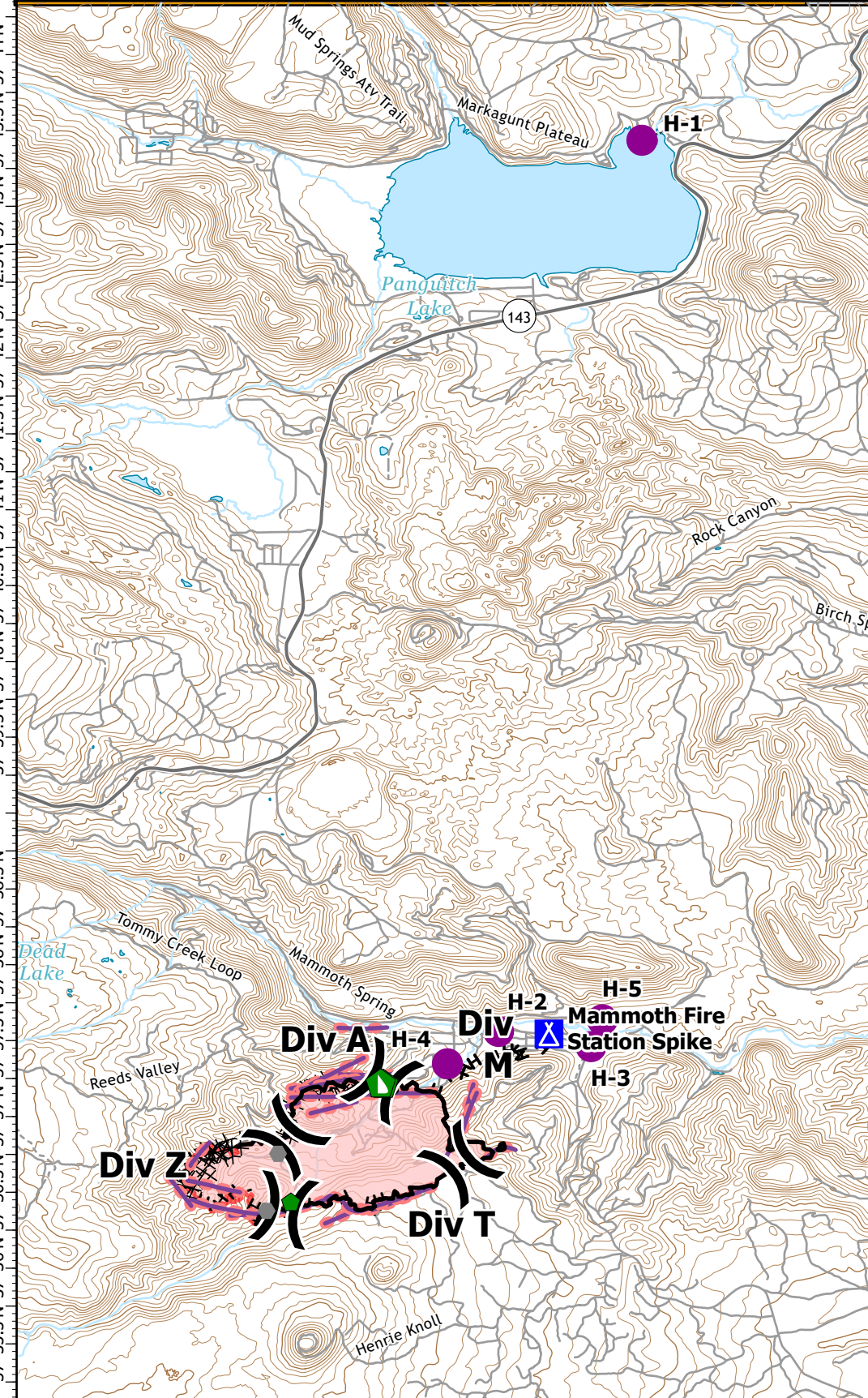
SUPPRESSION ACTIVITY

MAMMOTH

UT-DIF-000270

06/13/2021

112°41.5'W 112°40.5'W 112°39.5'W 112°38.5'W 112°37.5'W 112°36.5'W 112°35.5'W 112°34.5'W 112°33.5'W 112°32.5'W 112°31.5'W 112°30.5'W 112°29.5'W 112°28.51'W 112°27.5'W 112°26.5'W 112°25.5'W



112°41.5'W 112°40.5'W 112°39.5'W 112°38.5'W 112°37.5'W 112°36.5'W 112°35.5'W 112°34.5'W 112°33.5'W 112°32.5'W 112°31.5'W 112°30.5'W 112°29.5'W 112°28.51'W 112°27.5'W 112°26.5'W 112°25.5'W

6/12/2021 2026
Acres from IR and GPS
WGS 1984 Datum, LatLong Grid

0 0.5 1 2 3 4 Miles

709 acres at 20210612

● Hotspot	◆ Repair Point	H Completed Hand Line	— Secondary Hwy	- - - Trail	— Nonearthen Dam	— Depression Intermediate
⌋ Division Break	◆ Dozer Push	— Retardant Drops in the Keep Out	— Local Connector	— Perennial Stream	— Index	— Perennial Lake
⊠ Camp	▭ Wildfire Daily Fire Perimeter	— Retardant Drop	— Local Road	— Canal/Ditch	— Intermediate	
● Other	⊗ Completed Dozer Line	— Contained Line	— 4WD	— Intermittent Stream	— Depression Index	