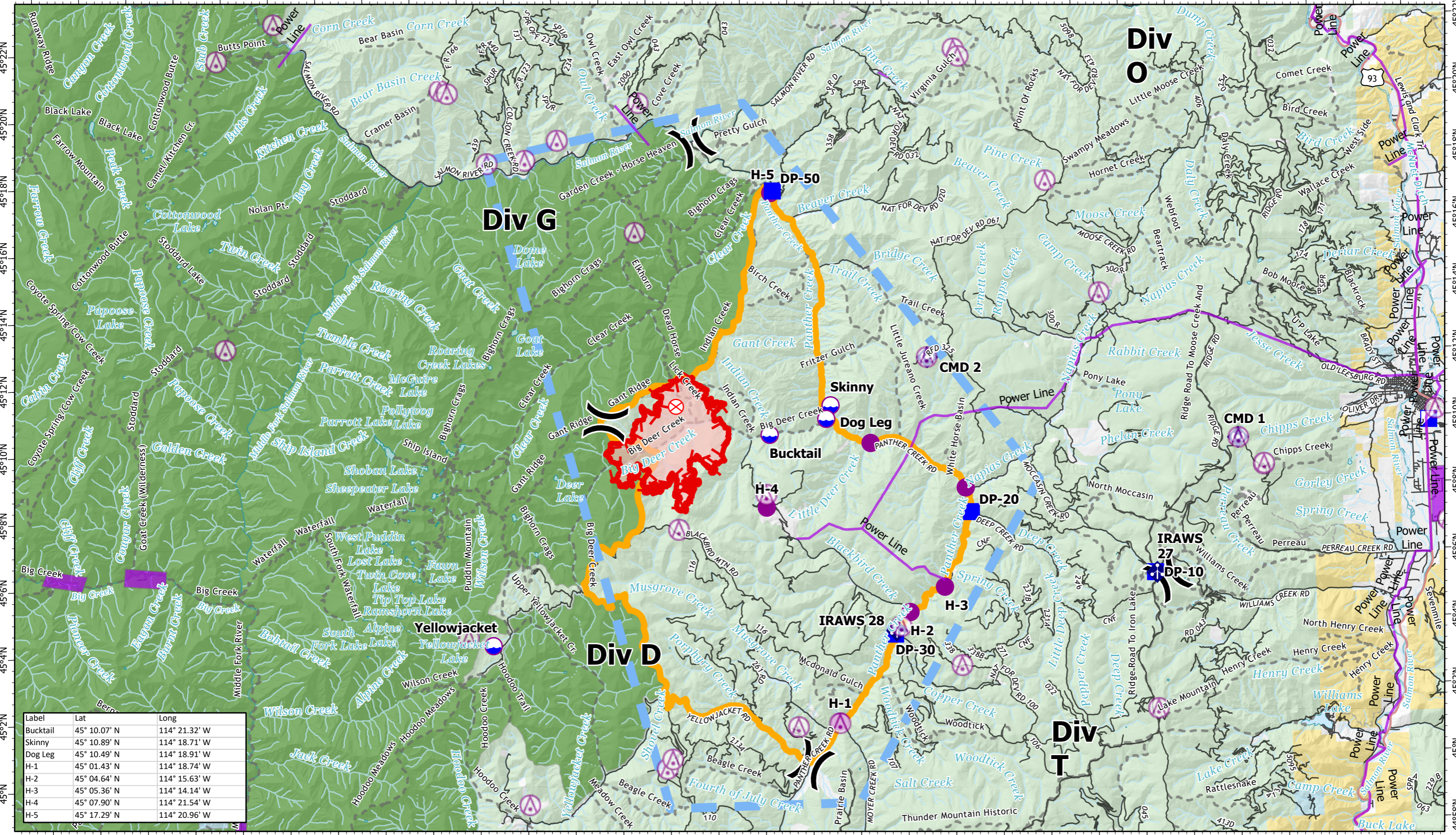


114°52'W 114°50'W 114°48'W 114°46'W 114°44'W 114°42'W 114°40'W 114°38'W 114°36'W 114°34'W 114°32'W 114°30'W 114°28'W 114°26'W 114°24'W 114°22'W 114°20'W 114°18'W 114°16'W 114°14'W 114°12'W 114°10'W 114°8'W 114°6'W 114°4'W 114°2'W 114°W 113°58'W 113°56'W 113°54'W



Label	Lat	Long
Bucktail	45° 10.07' N	114° 21.32' W
Skinny	45° 10.89' N	114° 18.71' W
Dog Leg	45° 10.49' N	114° 18.91' W
H-1	45° 01.43' N	114° 18.74' W
H-2	45° 04.64' N	114° 15.63' W
H-3	45° 05.36' N	114° 14.14' W
H-4	45° 07.90' N	114° 21.54' W
H-5	45° 17.29' N	114° 20.96' W

**6,173 est. acres**  
Acres from IR 7/13 2340 hrs  
4 Miles

Flight Hazard Point	Division Break	Fire Origin	Flight Hazard Line	Secondary Hwy	4WD	Flight Hazard Polygon
Dip Site	Incident Command Post	Mobile Weather Unit	Temporary Flight Restriction	Local Connector	Trail	Initial Attack Area
Helispot	Drop Point	Repeater	Fire Edge	Local Road	Wildfire Daily Fire Perimeter	Wilderness Boundary

7/14/2021