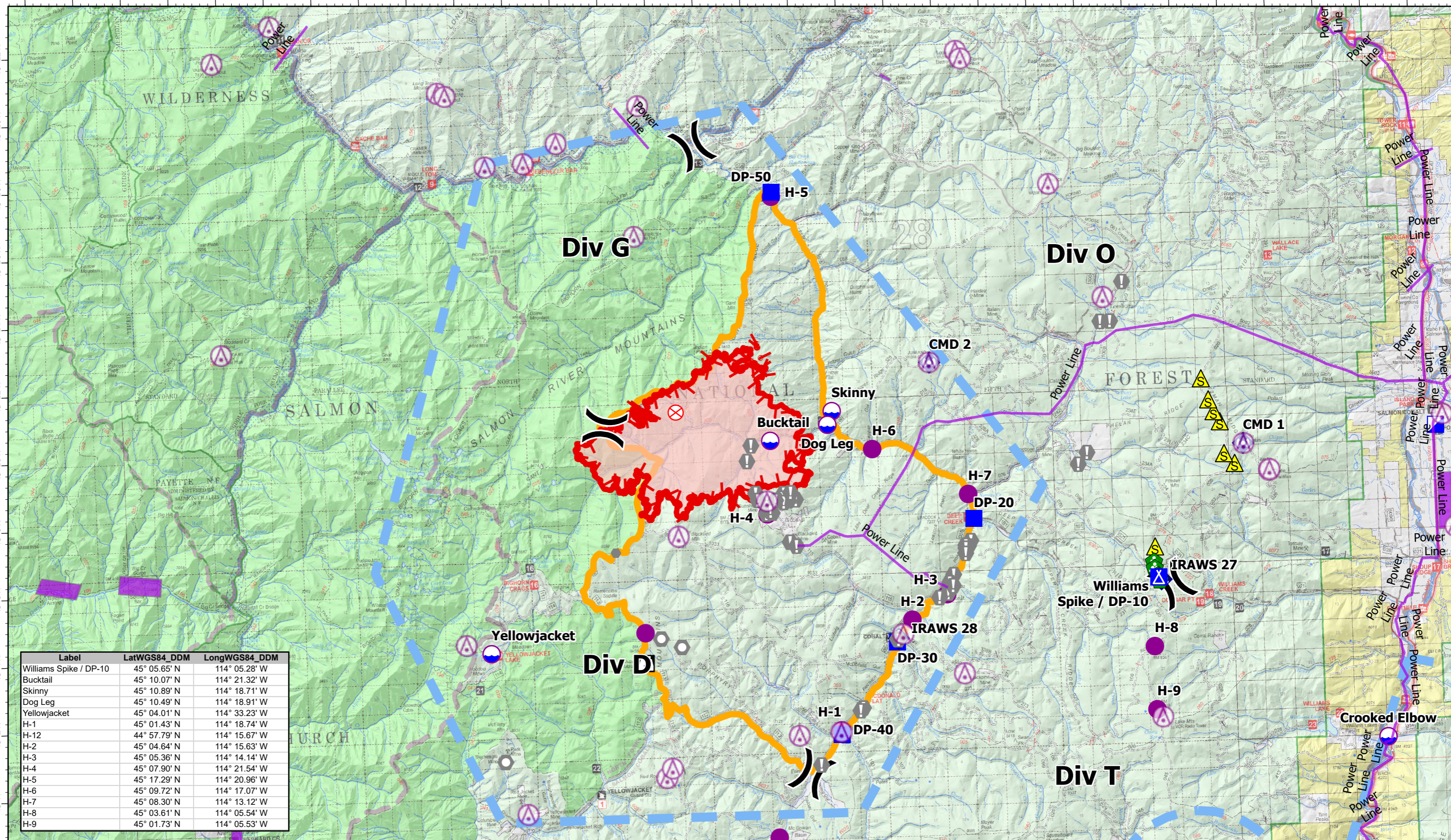


114°52'W 114°50'W 114°48'W 114°46'W 114°44'W 114°42'W 114°40'W 114°38'W 114°36'W 114°34'W 114°32'W 114°30'W 114°28'W 114°26'W 114°24'W 114°22'W 114°20'W 114°18'W 114°16'W 114°14'W 114°12'W 114°10'W 114°8'W 114°6'W 114°4'W 114°2'W 114°0'W 113°58'W 113°56'W 113°54'W



Label	LatWGS84_DDM	LongWGS84_DDM
Williams Spike / DP-10	45° 05.65' N	114° 05.28' W
Bucktail	45° 10.07' N	114° 21.32' W
Skinny	45° 10.89' N	114° 18.71' W
Dog Leg	45° 10.49' N	114° 18.91' W
Yellowjacket	45° 04.01' N	114° 33.23' W
H-1	45° 01.43' N	114° 18.74' W
H-12	44° 57.79' N	114° 15.67' W
H-2	45° 04.64' N	114° 15.63' W
H-3	45° 05.36' N	114° 14.14' W
H-4	45° 07.90' N	114° 21.54' W
H-5	45° 17.29' N	114° 20.96' W
H-6	45° 09.72' N	114° 17.07' W
H-7	45° 08.30' N	114° 13.12' W
H-8	45° 03.61' N	114° 05.54' W
H-9	45° 01.73' N	114° 05.53' W

114°52'W 114°50'W 114°48'W 114°46'W 114°44'W 114°42'W 114°40'W 114°38'W 114°36'W 114°34'W 114°32'W 114°30'W 114°28'W 114°26'W 114°24'W 114°22'W 114°20'W 114°18'W 114°16'W 114°14'W 114°12'W 114°10'W 114°8'W 114°6'W 114°4'W 114°2'W 114°0'W 113°58'W 113°56'W 113°54'W

15,952 est. acres
Acres from IR 7/18 2200 hrs
4 Miles

Flight Hazard Point
 Dip Site
 Helispot
 Division Break
 Incident Command Post
 Drop Point
 Camp
 Lookout
 Fire Origin
 Value at Risk
 Other Landmark
 Landmark
 Landing or Log Deck
 Mobile Weather Unit Repeater
 Safety Zone
 Flight Hazard Polygon
 Temporary Flight Restriction
 Fire Edge Wildfire Daily Fire Perimeter
 Initial Attack Area

7/19/2021