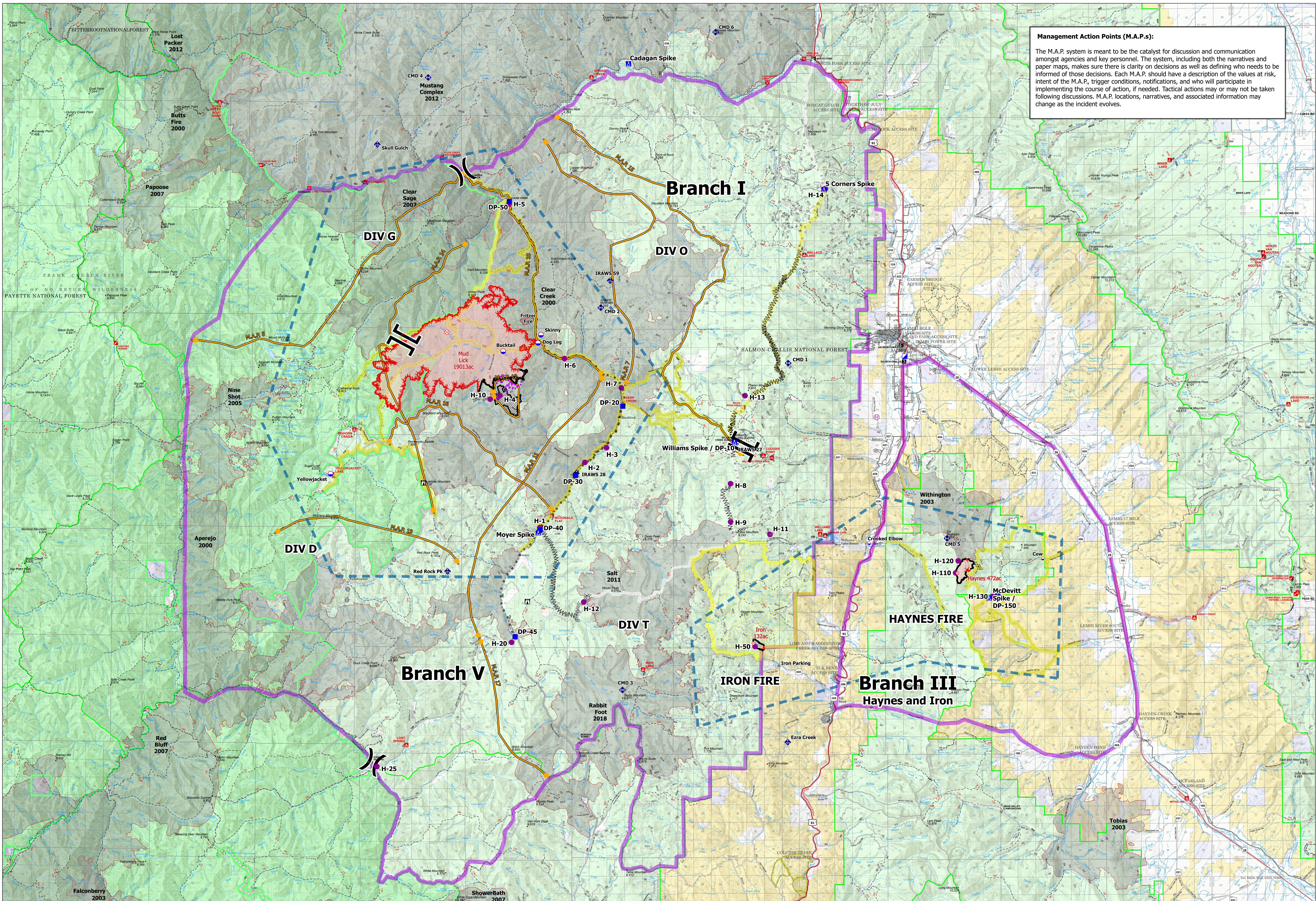
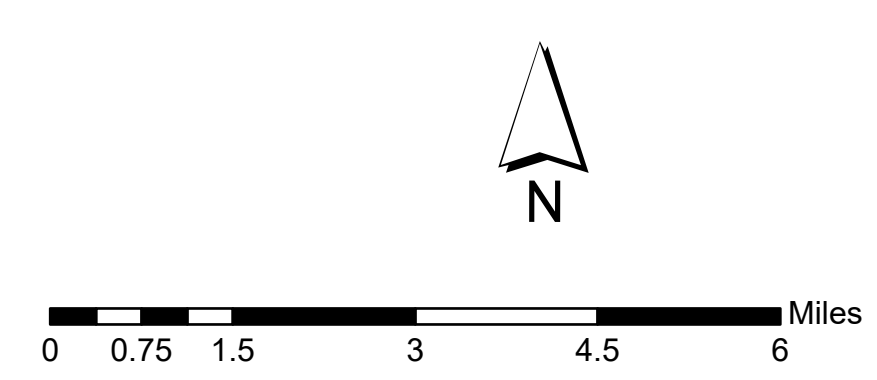


Management Action Points (M.A.P.s):
 The M.A.P. system is meant to be the catalyst for discussion and communication amongst agencies and key personnel. The system, including both the narratives and paper maps, makes sure there is clarity on decisions as well as defining who needs to be informed of those decisions. Each M.A.P. should have a description of the values at risk, intent of the M.A.P., trigger conditions, notifications, and who will participate in implementing the course of action, if needed. Tactical actions may or may not be taken following discussions. M.A.P. locations, narratives, and associated information may change as the incident evolves.



Planning
 Mud Lick: ID-SCF-021130:19,013 Acres
 Iron: ID-SCF-021157:132 Acres
 Haynes: ID-SCF-021154:472 Acres
 7/29/2021



- Dip Site
- Incident Command Post
- Bridge
- M Completed Fuel Break
- - - Planned Secondary Line
- T F R
- Helispot
- Drop Point
- ◆ Mobile Weather Unit
- - - Completed Hand Line
- - - Access or Improved Road
- Helibase
- Camp
- ◆ Repeater
- - - Completed Road as Line
- - - Management Action Point
- x Division Break
- Lookout
- - - Confinement Line
- - - Planned Dozer Line
- - - Other
- x Branch Break
- Fire Origin
- - - Completed Dozer Line
- - - Planned Road as Line
- - - Route
- Closed Roads / Trails
- Planning Area
- - - Contained Line
- - - Mining Ops
- Fire Perimeter
- Closed Area