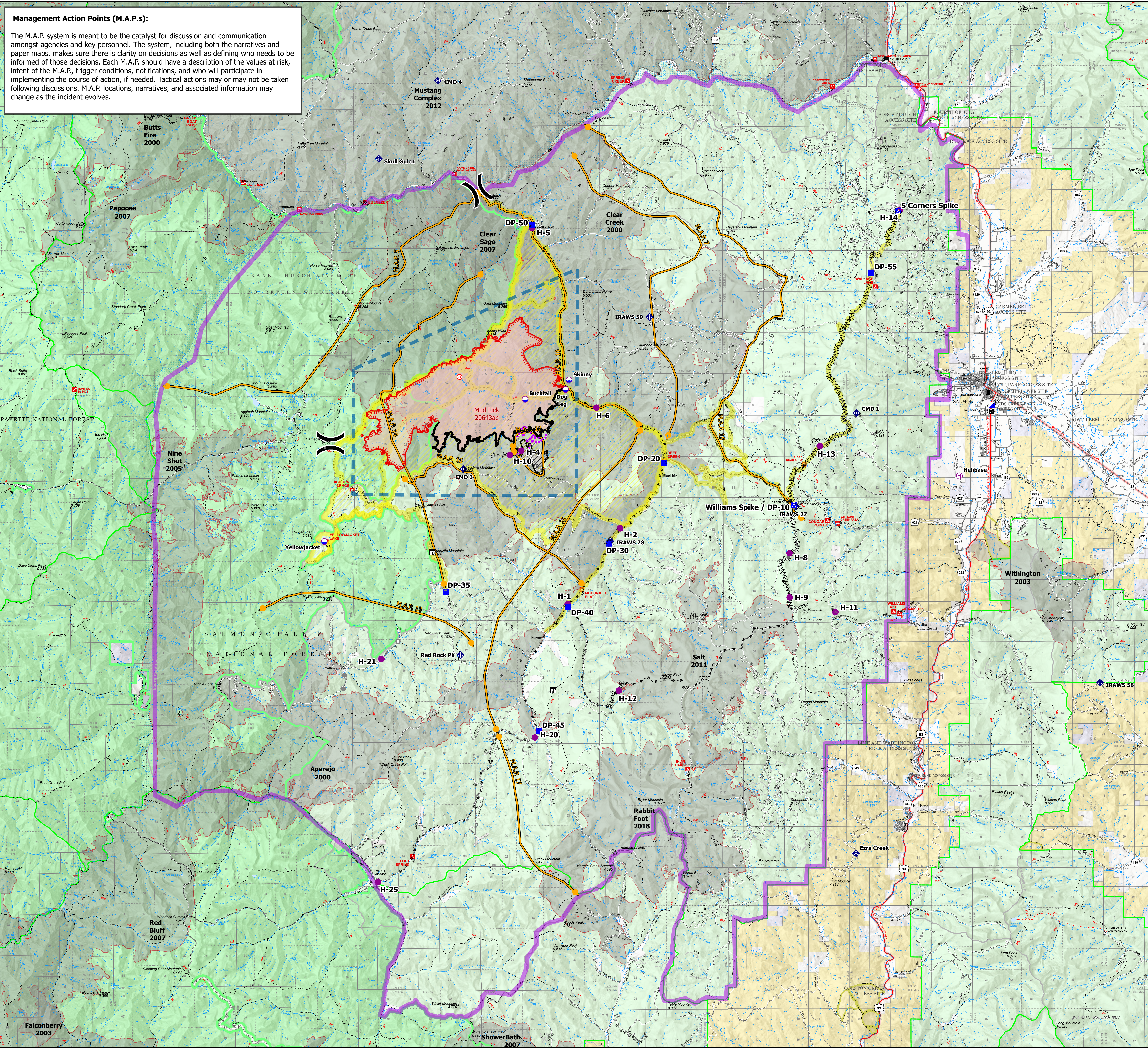
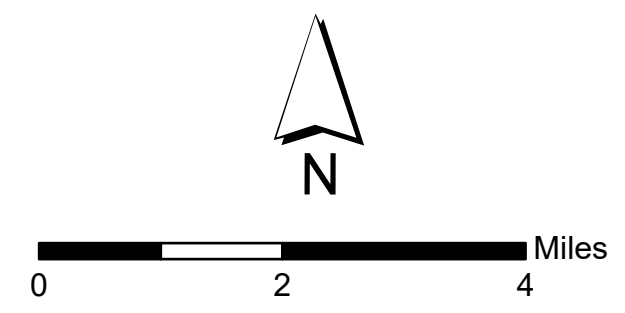


**Management Action Points (M.A.P.s):**

The M.A.P. system is meant to be the catalyst for discussion and communication amongst agencies and key personnel. The system, including both the narratives and paper maps, makes sure there is clarity on decisions as well as defining who needs to be informed of those decisions. Each M.A.P. should have a description of the values at risk, intent of the M.A.P., trigger conditions, notifications, and who will participate in implementing the course of action, if needed. Tactical actions may or may not be taken following discussions. M.A.P. locations, narratives, and associated information may change as the incident evolves.



**Planning**  
 Mud Lick  
 ID-SCF-021130  
 20,651 Acres  
 8/12/2021



- |                         |               |                        |                          |                           |                         |                 |
|-------------------------|---------------|------------------------|--------------------------|---------------------------|-------------------------|-----------------|
| ● Dip Site              | ■ Drop Point  | ◆ Mobile Weather Unit  | ⋯ Completed Hand Line    | — Management Action Point | ▭ Contained Line        | ▭ Planning Area |
| ● Helispot              | ■ Camp        | ◆ Repeater             | ⋯ Completed Road as Line | --- Other                 | ▭ Other                 | ⚡ Mining Ops    |
| ⊕ Helibase              | ⊠ Lookout     | ◆ Confinement Line     | ⋯ Planned Dozer Line     | ⋯ Route                   | ▭ Fire Perimeter        |                 |
| ⊗ Division Break        | ⊗ Fire Origin | ⋯ Completed Dozer Line | ⋯ Planned Road as Line   | ⋯ T F R                   | ▭ Closed Area           |                 |
| ■ Incident Command Post | ● Bridge      | ⋯ Completed Fuel Break | ⋯ Planned Secondary Line | ⋯ Fire Edge               | ▭ Closed Roads / Trails |                 |