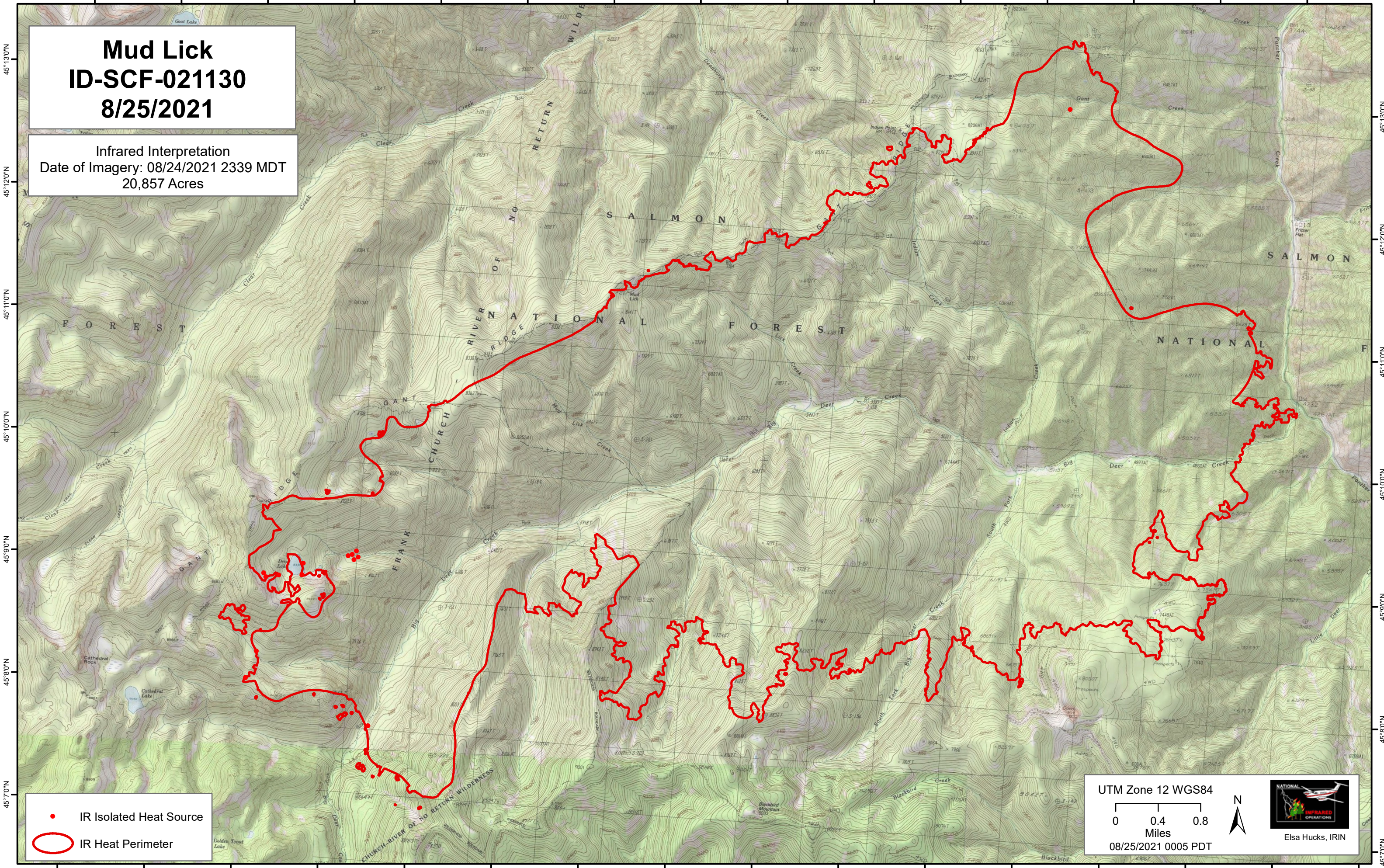


114°33'0"W 114°32'0"W 114°31'0"W 114°30'0"W 114°29'0"W 114°28'0"W 114°27'0"W 114°26'0"W 114°25'0"W 114°24'0"W 114°23'0"W 114°22'0"W 114°21'0"W 114°20'0"W 114°19'0"W

Mud Lick
ID-SCF-021130
8/25/2021

Infrared Interpretation
Date of Imagery: 08/24/2021 2339 MDT
20,857 Acres



45°13'0"N
45°12'0"N
45°11'0"N
45°10'0"N
45°9'0"N
45°8'0"N
45°7'0"N

45°13'0"N
45°12'0"N
45°11'0"N
45°10'0"N
45°9'0"N
45°8'0"N
45°7'0"N

● IR Isolated Heat Source
○ IR Heat Perimeter

UTM Zone 12 WGS84
0 0.4 0.8
Miles
08/25/2021 0005 PDT

Elsa Hucks, IRIN

114°33'0"W 114°32'0"W 114°31'0"W 114°30'0"W 114°29'0"W 114°28'0"W 114°27'0"W 114°26'0"W 114°25'0"W 114°24'0"W 114°23'0"W 114°22'0"W 114°21'0"W 114°20'0"W 114°19'0"W 114°18'0"W