
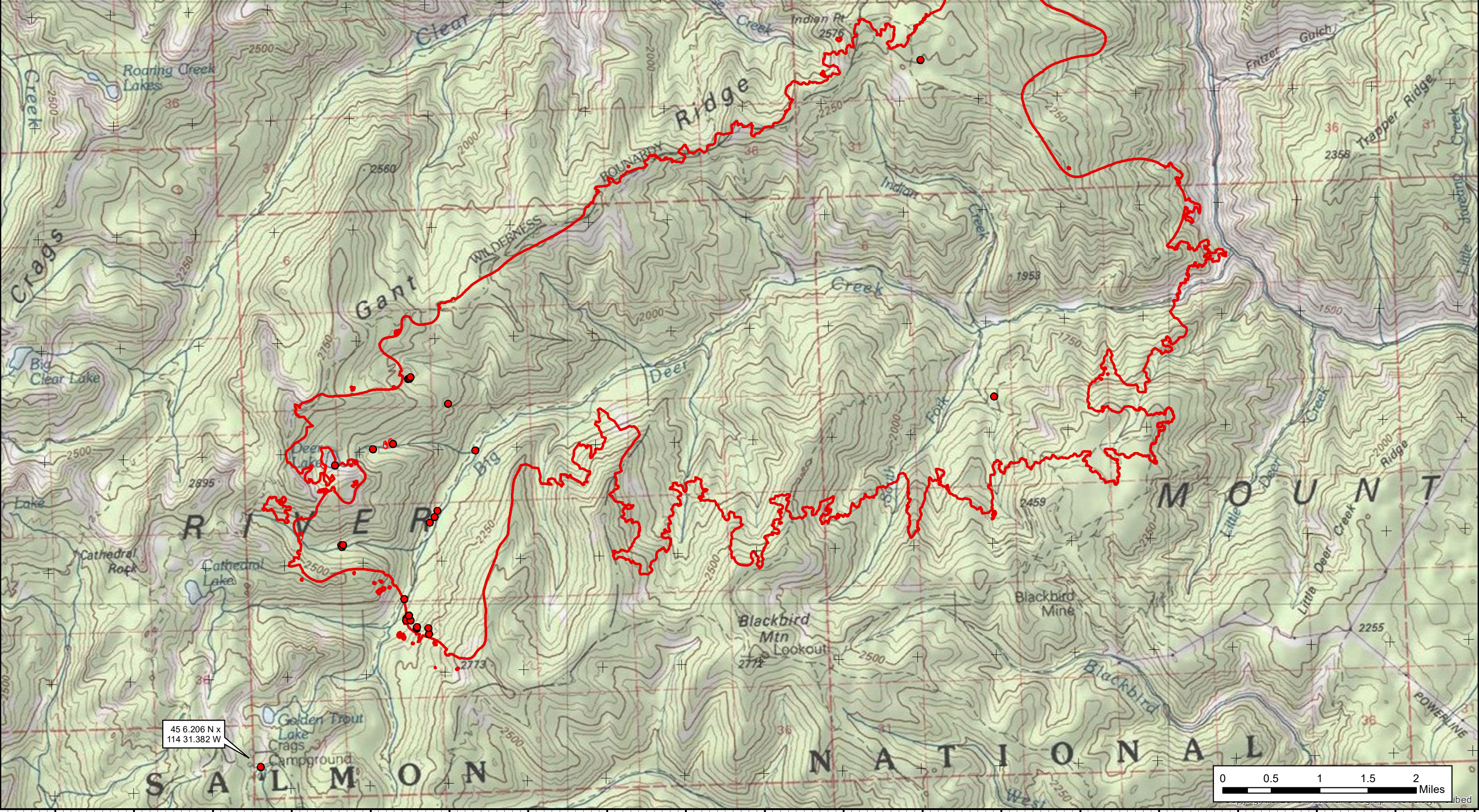


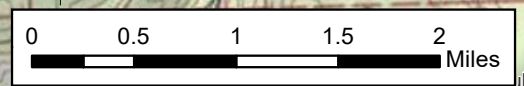
114°34'0"W 114°33'0"W 114°32'0"W 114°31'0"W 114°30'0"W 114°29'0"W 114°28'0"W 114°27'0"W 114°26'0"W 114°25'0"W 114°24'0"W 114°23'0"W 114°22'0"W 114°21'0"W 114°20'0"W 114°19'0"W 114°18'0"W 114°17'0"W 114°16'0"W

 **Mud Lick**
ID-SCF-021130
Infrared Map
 Imagery Date: 9/08/2021 @ 2028 MDT
 Interpreted Size: 20,857 acres
 IRIN: Elise Bowne
 NAD83

- Isolated Heat Sources
- Intense Heat
- Scattered Heat
- Heat Perimeter



45 6.206 N x
114 31.382 W



114°34'0"W 114°33'0"W 114°32'0"W 114°31'0"W 114°30'0"W 114°29'0"W 114°28'0"W 114°27'0"W 114°26'0"W 114°25'0"W 114°24'0"W 114°23'0"W 114°22'0"W 114°21'0"W 114°20'0"W 114°19'0"W 114°18'0"W 114°17'0"W 114°16'0"W