

114°32'0"W

114°30'0"W

114°28'0"W

114°26'0"W

114°24'0"W

114°22'0"W

114°20'0"W

114°18'0"W

45°14'0"N

45°12'0"N

45°10'0"N


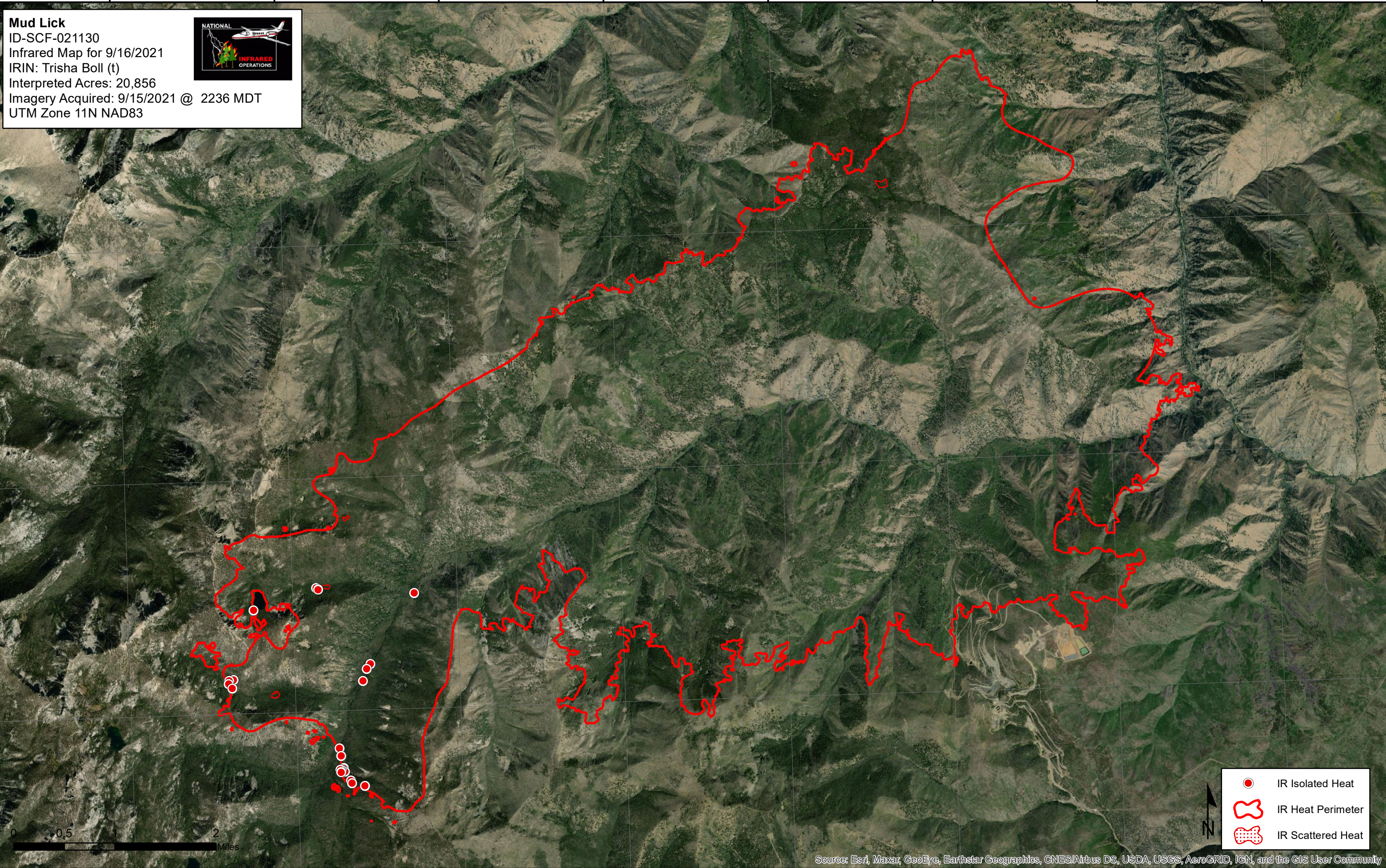
45°8'0"N




45°12'0"N

45°10'0"N

45°8'0"N

Mud Lick
 ID-SCF-021130
 Infrared Map for 9/16/2021
 IRIN: Trisha Boll (t)
 Interpreted Acres: 20,856
 Imagery Acquired: 9/15/2021 @ 2236 MDT
 UTM Zone 11N NAD83

-  IR Isolated Heat
-  IR Heat Perimeter
-  IR Scattered Heat



Source: Esri, Maxar, GeoEye, Earthstar Geographics, CNES/Airbus DS, USDA, USGS, AeroGRID, IGN, and the GIS User Community

114°32'0"W

114°30'0"W

114°28'0"W

114°26'0"W

114°24'0"W

114°22'0"W

114°20'0"W

114°18'0"W