

114°32'0"W 114°30'0"W 114°28'0"W 114°26'0"W 114°24'0"W 114°22'0"W 114°20'0"W 114°18'0"W

45°14'0"N

45°12'0"N

45°10'0"N


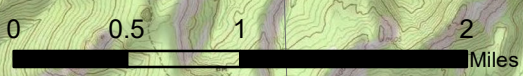
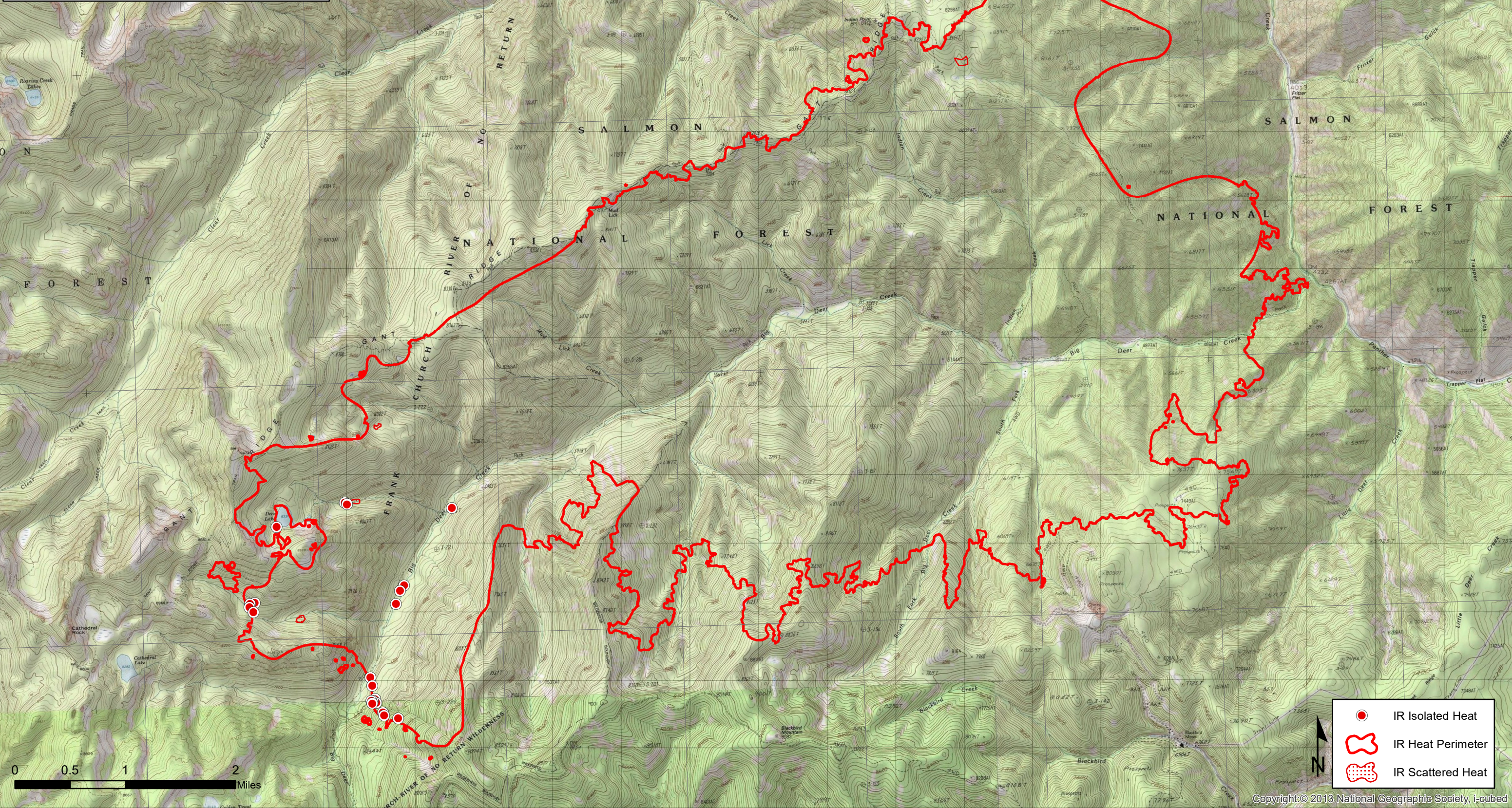
45°8'0"N




45°12'0"N

45°10'0"N

45°8'0"N

**Mud Lick**  
 ID-SCF-021130  
 Infrared Map for 9/16/2021  
 IRIN: Trisha Boll (t)  
 Interpreted Acres: 20,856  
 Imagery Acquired: 9/15/2021 @ 2236 MDT  
 UTM Zone 11N NAD83

-  IR Isolated Heat
-  IR Heat Perimeter
-  IR Scattered Heat



Copyright © 2013 National Geographic Society, i-cubed

114°32'0"W 114°30'0"W 114°28'0"W 114°26'0"W 114°24'0"W 114°22'0"W 114°20'0"W 114°18'0"W