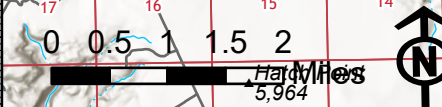


Air Ops Map

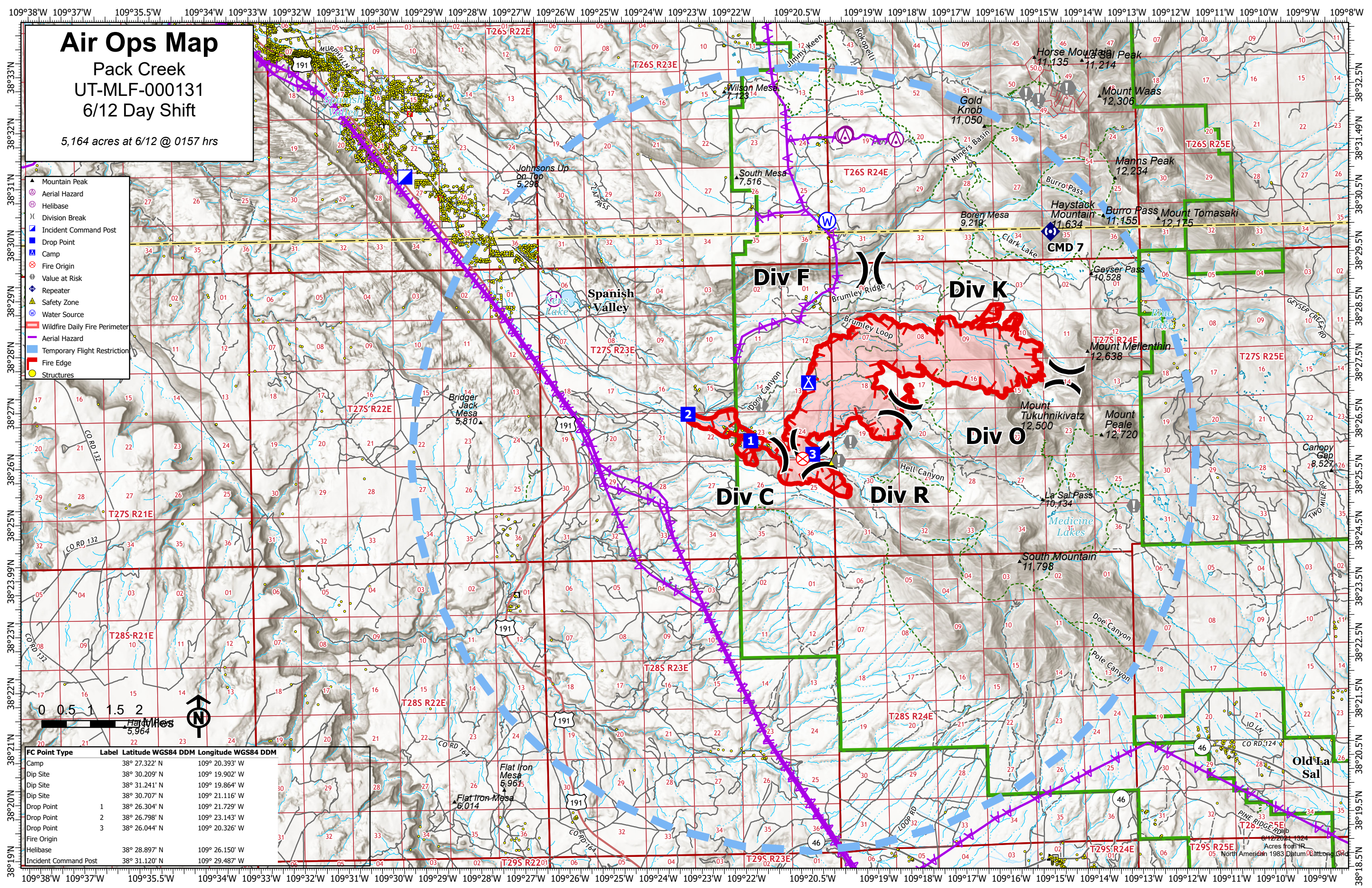
Pack Creek
UT-MLF-000131
6/12 Day Shift

5,164 acres at 6/12 @ 0157 hrs

- ▲ Mountain Peak
- ⊗ Aerial Hazard
- ⊙ Helibase
- () Division Break
- ▣ Incident Command Post
- ▣ Drop Point
- ⊠ Camp
- ⊗ Fire Origin
- ⊙ Value at Risk
- ◆ Repeater
- ▲ Safety Zone
- ⊙ Water Source
- ▬ Wildfire Daily Fire Perimeter
- ▬ Aerial Hazard
- ▬ Temporary Flight Restriction
- ▬ Fire Edge
- Structures



| FC Point Type | Label | Latitude WGS84 DDM | Longitude WGS84 DDM |
|-----------------------|-------|--------------------|---------------------|
| Camp | | 38° 27.322' N | 109° 20.393' W |
| Dip Site | | 38° 30.209' N | 109° 19.902' W |
| Dip Site | | 38° 31.241' N | 109° 19.864' W |
| Dip Site | | 38° 30.707' N | 109° 21.116' W |
| Drop Point | 1 | 38° 26.304' N | 109° 21.729' W |
| Drop Point | 2 | 38° 26.798' N | 109° 23.143' W |
| Drop Point | 3 | 38° 26.044' N | 109° 20.326' W |
| Fire Origin | | | |
| Helibase | | 38° 28.897' N | 109° 26.150' W |
| Incident Command Post | | 38° 31.120' N | 109° 29.487' W |



Acres from IR
North American 1983 Datum
6/12/2021 1324
Lattong, GR