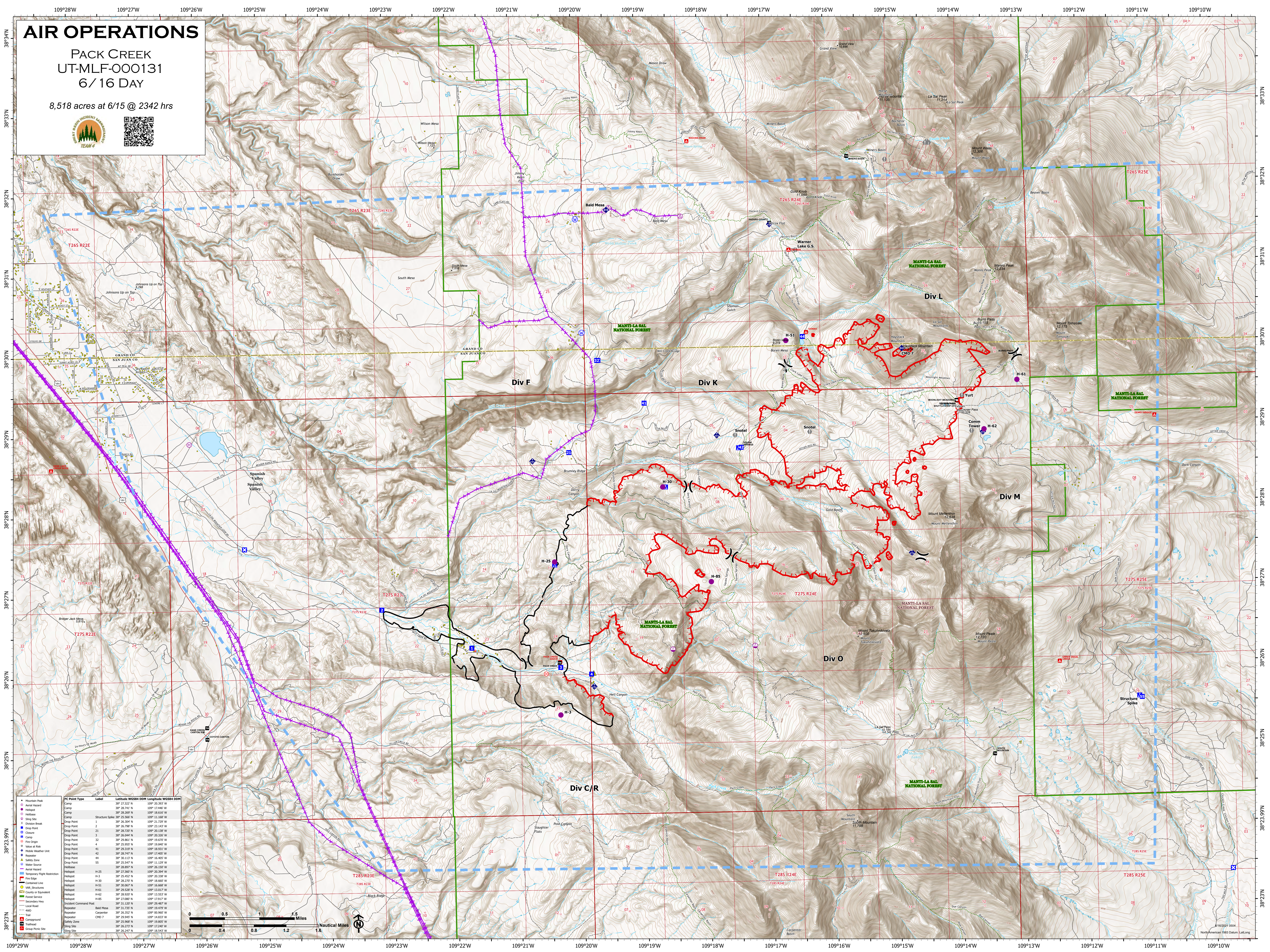


AIR OPERATIONS

PACK CREEK
UT-MLF-000131
6/16 DAY

8,518 acres at 6/15 @ 2342 hrs



IC Point Type	Label	Latitude WGS84 DDM	Longitude WGS84 DDM
Mountain Peak			
Aerial Hazard			
Camp			
Helibase			
Helipad			
Shing Site			
Structure Spike			
Drop Point	1	38° 26.204' N	109° 21.729' W
Drop Point	2	38° 26.708' N	109° 23.141' W
Drop Point	21	38° 28.227' N	109° 23.138' W
Drop Point	3	38° 26.044' N	109° 20.326' W
Drop Point	32	38° 29.861' N	109° 19.670' W
Drop Point	4	38° 25.507' N	109° 18.860' W
Drop Point	41	38° 26.319' N	109° 18.931' W
Drop Point	42	38° 26.747' N	109° 17.405' W
Drop Point	44	38° 23.117' N	109° 16.402' W
Drop Point	55	38° 25.547' N	109° 11.129' W
Helibase	H-25	38° 27.360' N	109° 20.394' W
Helibase	H-3	38° 25.452' N	109° 20.338' W
Helibase	H-30	38° 28.277' N	109° 18.822' W
Helibase	H-51	38° 30.067' N	109° 16.668' W
Helibase	H-61	38° 29.538' N	109° 13.037' W
Helibase	H-62	38° 28.527' N	109° 11.533' W
Helibase	H-85	38° 27.080' N	109° 17.617' W
Incident Command Post	Bald Mesa	38° 31.120' N	109° 20.487' W
Responder			
Carpenter			
Responder	CHD 7	38° 29.965' N	109° 16.822' W
Responder			
Shing Site			
Shing Site			

